

FOR
SALE



10 Southville Close, Ewell KT19 9RB



VIEWINGS AVAILABLE 10am till 12.30 SATURDAY 13/4/2024 £560,000 Freehold

252, Gressington Road, Ewell, Epsom, KT19 9XP 0208 394 2555 sales@jacksonnoon.com

PROPERTY SUMMARY

JACKSON NOON ESTATE AGENTS are pleased to offer this EXTENDED THREE BEDROOM HOUSE with THREE RECEPTION ROOMS, shower room and bathroom, double glazing, gas central heating, SOUTH FACING REAR GARDEN, off street parking.....CALL NOW TO VIEW.

POINTS OF INTEREST

- *Extended Three Bedroom House*
- *Three Reception Rooms*
- *Bathroom & Shower Room*
- *South Facing Rear Garden*
- *Off Street Parking*
- *Cul-De-Sac*



ROOM DESCRIPTIONS

Front Door to

Entrance Hall

Cloaks hanging space, understairs cupboard, radiator, wood floor

Lounge

11' 10" x 10' 5" (3.61m x 3.18m) Radiator, laminate floor, double glazed window

Dining Room

12' x 9' 9" (3.66m x 2.97m) Radiator, laminate floor, double glazed French doors to garden

Kitchen

12' 7" x 10' 3" (3.84m x 3.12m) Single drainer 1½ bowl sink unit inset in roll top work surface, range of cupboards and units, larder cupboard, breakfast bar, space for fridge freezer, integrated dishwasher, space for cooker, radiator, double glazed window, double glazed door to garden

Study/Utility Area

7' 1" x 5' 9" (2.16m x 1.75m) Radiator, cupboard housing boiler, plumbing for autowash, double glazed window

Shower Room

Comprising shower cubicle, low level wc, wash hand basin, heated towel rail, tiled walls and floor

Stairs to First Floor

Landing

Access to loft, double glazed window

Bedroom 1

12' 11" x 10' 5" (3.94m x 3.18m) Radiator, fitted cupboard, double glazed window

Bedroom 2

11' 10" x 9' 1" (3.61m x 2.74m) Radiator, fitted wardrobes, laminate floor, double glazed window

Bedroom 3

8' x 5' 11" (2.44m x 1.80m) Radiator, laminate floor, double glazed window

Bathroom

Comprising bath with mixer tap and shower attachment, shower screen, low level wc, wash hand basin, heated towel rail, part tiled walls, double glazed window

Outside

Front Garden

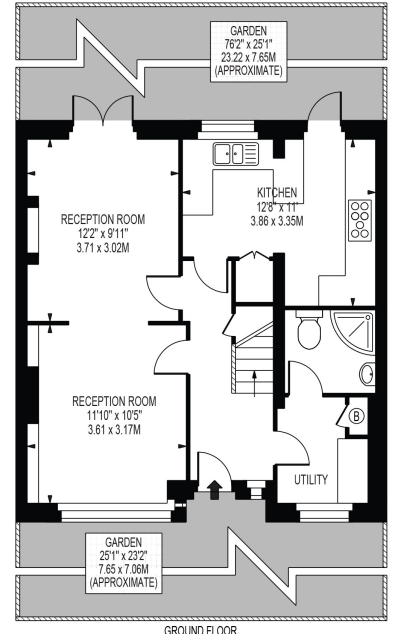
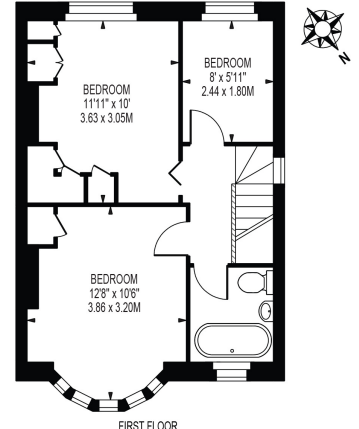
Mainly paved, off street parking

Rear Garden

Mainly laid to lawn, mature borders, garden shed, decking area

SOUTHVILLE CLOSE

APPROXIMATE GROSS INTERNAL FLOOR AREA: 920 SQ.FT - 85.47 SQ.M



FOR ILLUSTRATION PURPOSES ONLY

THIS FLOOR PLAN SHOULD BE USED AS A GENERAL OUTLINE FOR GUIDANCE ONLY AND DOES NOT CONSTITUTE IN WHOLE OR IN PART AN OFFER OR CONTRACT. ANY INTENDING PURCHASER OR LESSEE SHOULD SATISFY THEMSELVES BY INSPECTION, SEARCHES, ENQUIRIES AND FULL SURVEY AS TO THE CORRECTNESS OF EACH STATEMENT. ANY AREAS, MEASUREMENTS OR DISTANCES QUOTED ARE APPROXIMATE AND SHOULD NOT BE USED TO VALUE A PROPERTY OR BE THE BASIS OF ANY SALE OR LET.