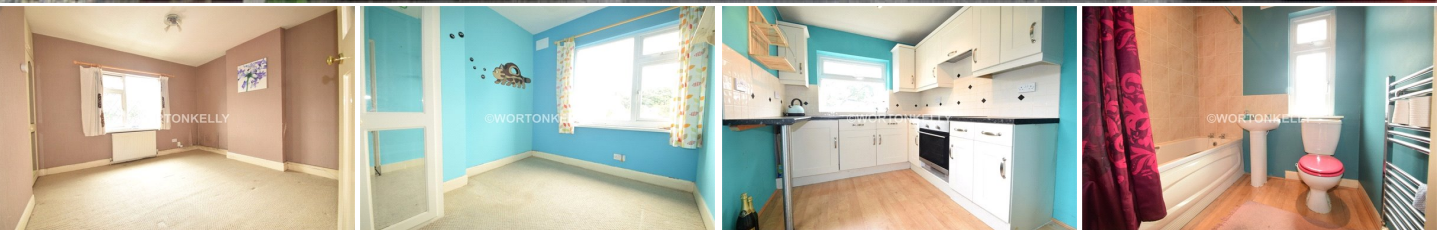




wortonkelly  
Residential Sales & Lettings



## NEWTON STREET, WEST BROMWICH

### £600.00 PER MONTH

#### TO LET!!

This two bedroom mid-terrace property in the local West Bromwich area. Having entrance hall, family lounge, kitchen, two bedrooms and bathroom!! The property isn't one to be missed.

- Mid-Terrace House Property
- Two Bedroom
- Lounge
- Kitchen
- Bathroom
- Front And Rear Garden

## Ground Floor

### Entrance Hall

With double glazed door to front elevation and radiator.

### Lounge

22' x 11' 5" (6.71m x 3.48m)

With double glazed window to front elevation, gas fire place, radiator, T.V point, carpet and under stair cupboard.

### Kitchen

9' x 7' 8" (2.74m x 2.34m)

With double glazed window to rear elevation, door to garden, fitted with a range of wall, base and drawer units with complimentary work surface over, inset stainless steel single bowl sink with drainer and partial tiling. The kitchen also benefits from integrated electric oven with inset electric hob and cooker hood. There is plumbing for a washing machine and laminate flooring.

## First Floor

### Landing

Having stairs form hallway, loft access and carpet.

### Bedroom One

11' 7" x 11' 6" (3.53m x 3.51m)

With double glazed window to front elevation, built in wardrobe, radiator, T.V point, central heating boiler and carpet flooring.

### Bedroom Two

9' 7" x 7' 10" (2.92m x 2.39m)

with double glazed window to rear elevation, radiator and carpet flooring.

### Bathroom

With double glazed windows to the rear elevation and comprising of bath, shower, wash hand basin, low

level flush W.C and laminate flooring.

## Outside

### Front Garden

To the front of the property there is a side parking area and gates to garden.

### Rear Garden

To the Rear of the property there is a paved patio area and lawn area.



DISCLAIMER: These particulars, whilst believed to be accurate are set out as a general outline only for guidance and do not constitute any part of an offer or contract. Intending purchasers should not rely on them as statements or representation of fact, but must satisfy themselves by inspection or otherwise as to their accuracy. We have not carried out a detailed survey nor tested the services, appliances and specific fittings. Room sizes should not be relied upon for carpets and furnishings. The measurements given are approximate. No person in this firms employment has the authority to make or give any representation or warranty in respect of the property.