



Newton Lodge, West Parkside, London, SE10 0BA

£450,000

Fantastic bright and airy two bedroom apartment situated in the highly sought after Millennium Village development. This well appointed apartment benefits from a modern kitchen and bathroom, spacious reception and private balcony with views towards Canary Wharf. Further benefits include 24 hour concierge services.

The development is located minutes from North Greenwich tube station (Jubilee Line), the Emirates Cable Cars and the O2 with the many attractions within, including bars and restaurants. Other notable amenities within walking distance include, schools, the river bus, local retail park and supermarkets.

Viewing by appointment with 1st avenue.

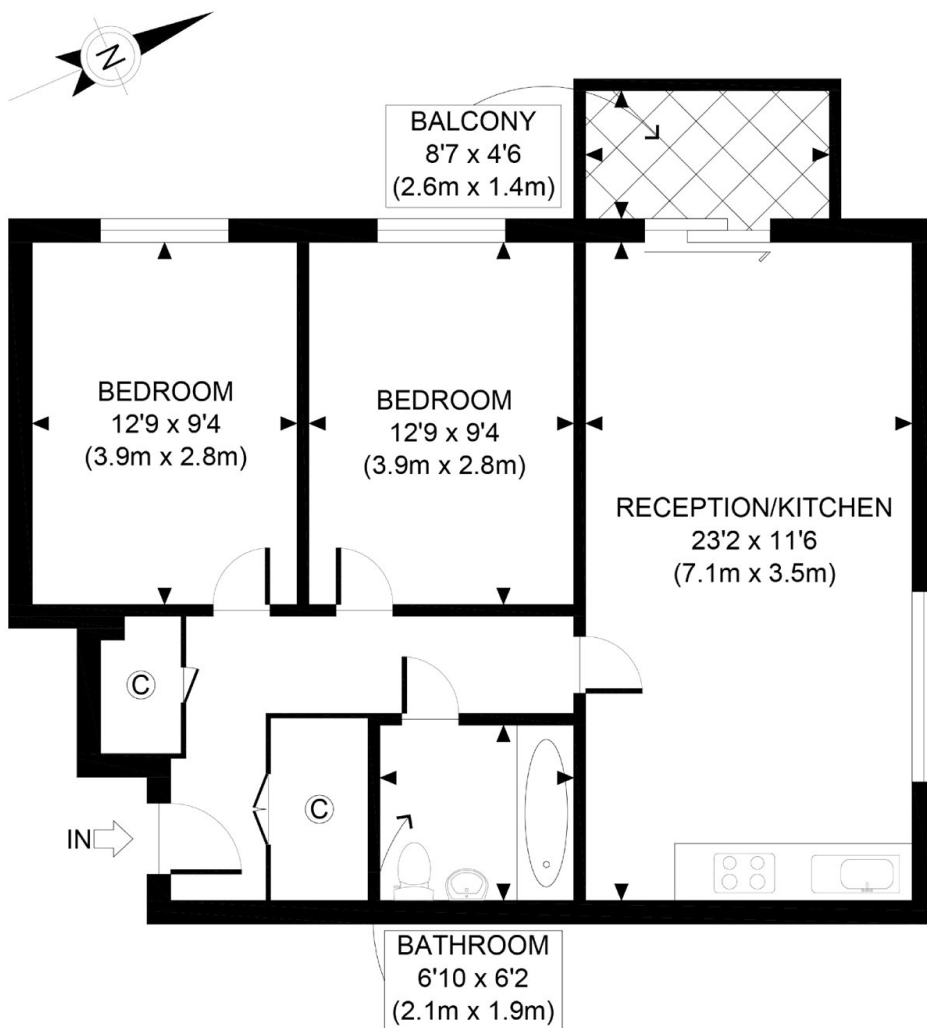
Call: 020 8293 8600

1st avenue, 128 Metcalfe Court, West Parkside, London SE10 0EL
email: info@1stavenue.co.uk

Newton Lodge, West Parkside, London, SE10 0BA

£450,000

1stavenue
Real Estate Services



FIRST FLOOR
GROSS INTERNAL
FLOOR AREA 680 SQ FT

APPROX. GROSS INTERNAL FLOOR AREA 680 SQ FT / 63 SQM

Ref:

Copyright **photoplan** 

Disclaimer: Floor plan measurements are approximate and are for illustrative purposes only. While we do not doubt the floor plan accuracy and completeness, you or your advisors should conduct a careful, independent investigation of the property in respect of monetary valuation

Viewing by appointment with 1st avenue.

Call: 020 8293 8600

1st avenue, 128 Metcalfe Court, West Parkside, London SE10 0EL
email: info@1stavenue.co.uk

1stavenue
Real Estate Services