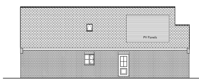




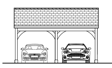
NEWSON & BUCK
ESTATE AGENTS



Front Elevation



Side Elevation



Front Elevation



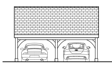
Side Elevation



Rear Elevation



Side Elevation

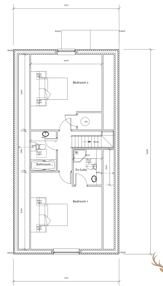
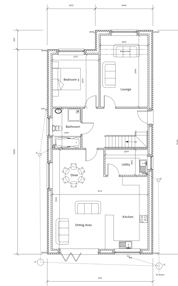


Rear Elevation



Side Elevation

Car Port



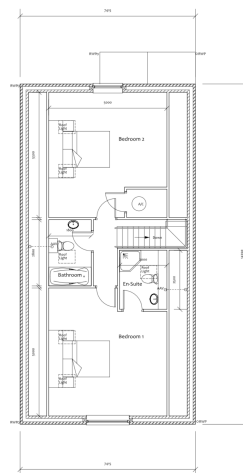
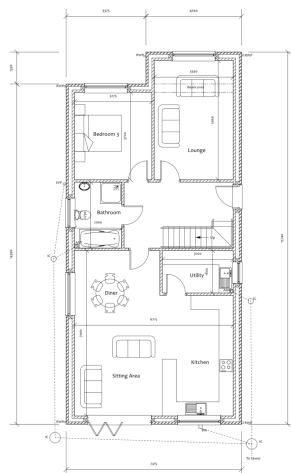
Land West Of Aldorcar, Coaly Lane, Ingoldisthorpe

£150,000

An exciting opportunity to acquire this plot of land situated in a secluded location within the highly popular Village of Ingoldisthorpe. Full planning permission has been granted (24/00230/F) for this detached dwelling set over two floors. To the ground floor the plans show hallway, open plan Kitchen Dining Sitting Area, Bathroom, Utility Room, separate lounge and bedroom three. To the first floor, you will find two bedrooms with the master benefitting from an ensuite, and a family bathroom. The property further benefits from permission for a detached carport.

Location

Ingoldisthorpe is a pretty Village situated within close proximity to the North Norfolk Coast and Sandringham Estate. The Village has many amenities in nearby Villages, including Snettisham and Hunstanton.



NEWSON & BUCK