



44 Ingress Park Avenue, Greenhithe, Kent, DA9 9GN
£450,000 Leasehold

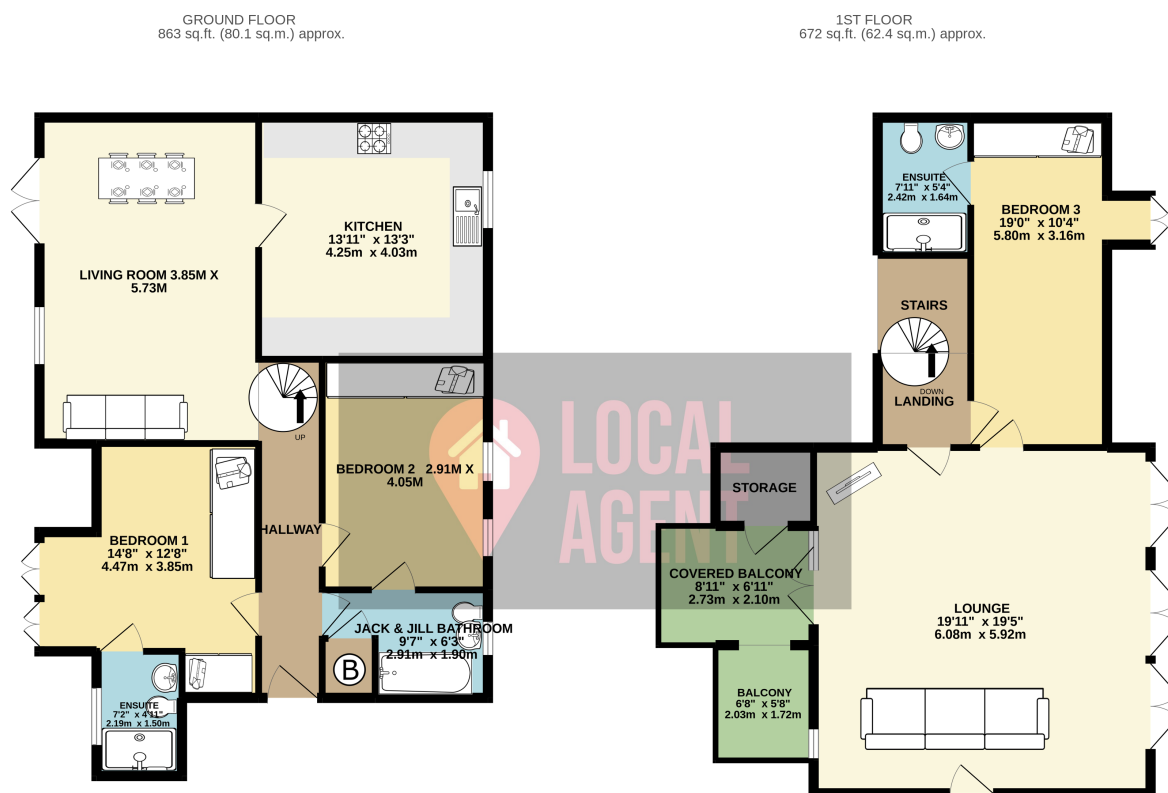


Description

Guide Price £450,000 - £500,000

Situated in the popular Ingress Park with direct views of the Abbey, this beautifully presented three bedroom split level penthouse apartment has excellent rooms sizes. Use our online diary to book your viewings.

This excellent location benefits from river walks along side the Thames, Just a short walk to the popular Pier Hotel which is known for its dining and the heart of Greenhithe Village. Bluewater Shopping Centre, easy access to Darenth Valley Hospital and Darenth Country Park which has history dating back to the Saxon times, the country park has excellent woodland walks and surrounded by horses paddocks which is ideal for a rural lifestyle. The proximity to the Darenth Valley Hospital has become very popular for families for work and access and Bluewater shopping centre is only a few minutes driveway away or a short walk. For London Commuters, Greenhithe Station is approximately 0.5 miles, Dartford main line station is 3 miles away and Ebbsfleet International Station is approximately 2.9 miles away. Easy access to A2 and M25 Networks to travel around London, Stansted and Gatwick Airport as well as down to coastal routes.



TOTAL FLOOR AREA : 1535 sq.ft. (142.6 sq.m.) approx.

Whilst every attempt has been made to ensure the accuracy of the floorplan contained here, measurements of doors, windows, rooms and any other items are approximate and no responsibility is taken for any error.