

## Birch Grove, Shepperton, TW17 8SS

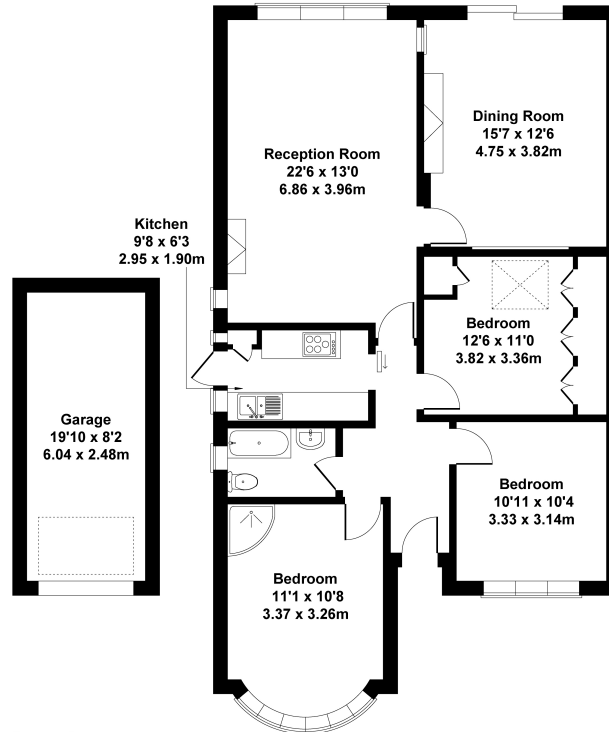
### Offer in Excess of £500,000



- No Onward Chain
- Three Double Bedrooms
- Cul-de-sac Location
- In Need Of Modernisation
- Large South Facing Rear Garden
- Huge Potential (STPP)
- Close To Schools
- Close To Upper Halliford Train Station

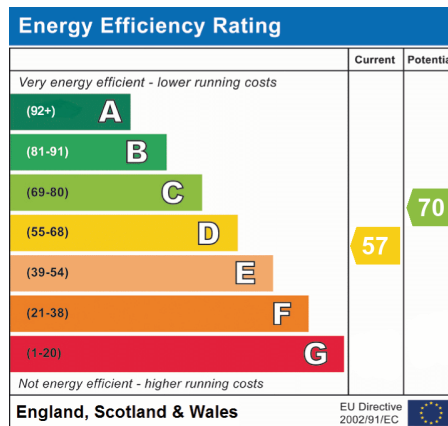
## Birch Grove, Shepperton, TW17

Approximate Gross Internal Area  
 Main House 1076 sq ft - 100 sq m  
 Garage 161 sq ft - 15 sq m  
 Total 1237 sq ft - 115 sq m



### GARAGE

This floorplan is for guidance only and does not form part of an offer or contract. Buyers or tenants should verify all details through inspection, searches, and surveys. Measurements are approximate and should not be relied upon for valuation or transactions. Produced by Plan Portal. [www.evolveLondon.co.uk](http://www.evolveLondon.co.uk)



We have not tested the services or domestic appliances so we cannot verify that they are in working order. The buyer is advised to obtain verification from their solicitor or surveyor. These particulars form no part of any offer or contract and their accuracy cannot be guaranteed.