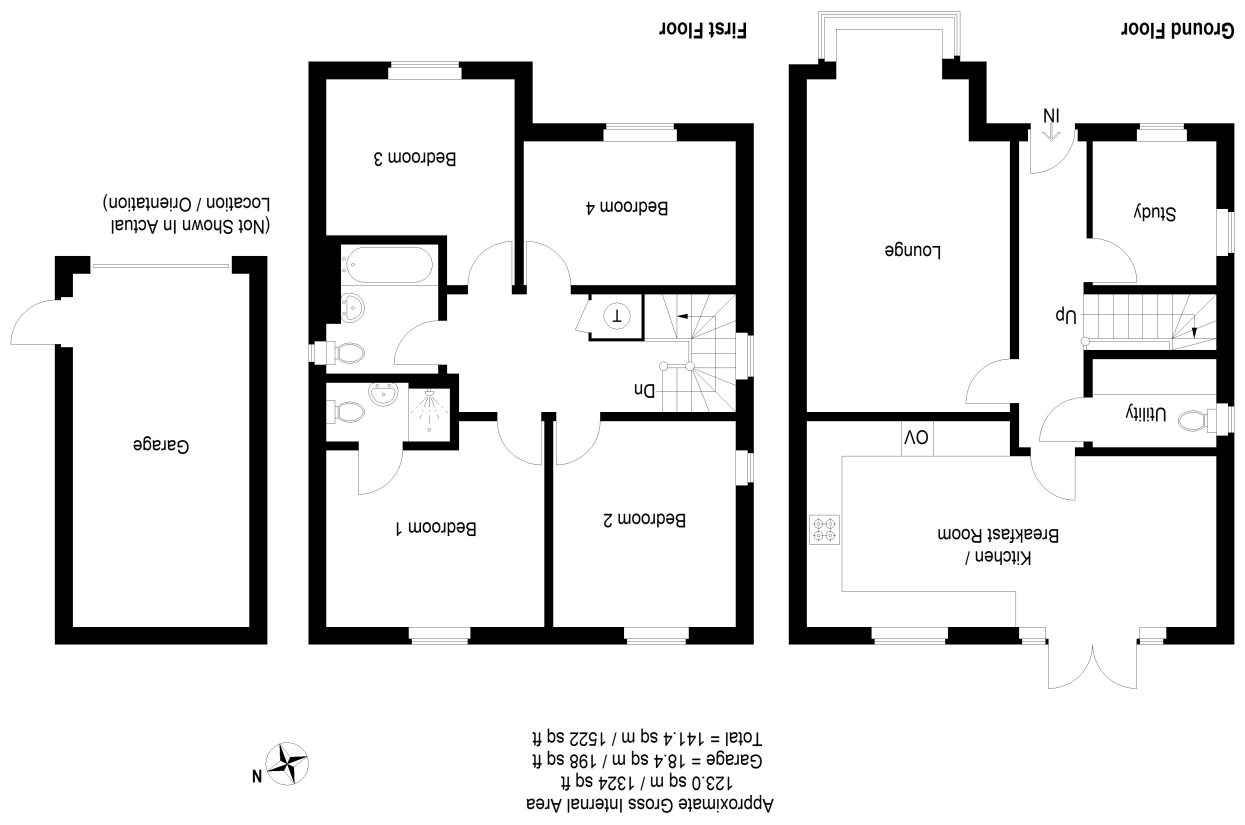


Huntingdon Office: 01480 414800
 www.peterlane.co.uk Web office open all day every day

Huntingdon
 60 High Street
 St Neots
 Tel: 01480 414800

Kimbolton
 24 High Street
 Kimbolton
 Tel: 01480 860400

Mayfair Office
 Cashel House
 15 Tayer St, London
 Tel: 0870 1127099



This plan is for layout guidance only. Not drawn to scale unless stated. Windows and door openings are approximate. Whilst every care is taken in the preparation of this plan, please check all dimensions, shapes and compass bearings before making any decisions reliant upon them. (ID1154583)



- Stunning Bellway built family home
- impressive 22ft Kitchen/family room with integrated appliances
- Garaging and two car driveway
- Popular village location

- Ensuite to master bedroom
- Larger than average walled garden
- No forward chain
- 22ft sitting room and separate study



Glazed Composite Front Door To

Entrance Hall

19' 1" x 2' 11" (5.82m x 0.89m)
Stairs to first floor, Amtico flooring.

Study

8' 1" x 6' 11" (2.46m x 2.11m)
A light double aspect room with UPVC windows to front and side aspects, TV point, telephone point, double panel radiator, Amtico flooring.

Cloakroom/Utility Room

6' 11" x 6' 4" (2.11m x 1.93m)
Fitted in a two piece contemporary white suite comprising low level WC, pedestal wash hand basin with mono bloc mixer tap and tiling, fuse box and master switch, double panel radiator, work surfaces, upstands and base cabinets, appliance spaces, UPVC window to side aspect, Amtico flooring.

Sitting Room

22' 3" x 11' 4" (6.78m x 3.45m)
UPVC bay window to front aspect, TV point, telephone point, two double panel radiators.



Kitchen/Dining Room

22' 5" x 9' 2" (6.83m x 2.79m)
A light ,open plan contemporary space with UPVC French doors to garden terrace and UPVC window to rear, double panel radiator, fitted in a range of base and wall mounted cabinets with complementing work surfaces and up-stands, single drainer resin sink unit with directional mono bloc mixer tap, drawer units, pan drawers, integral double oven and gas hob with suspended AEG extractor, integrated fridge freezer and dishwasher, ceramic tiled flooring.



First Floor Landing

Double panel radiator, access to loft space, cupboard housing pressurised hot water system and storage.

Principal Bedroom

12' 11" x 12' 0" (3.94m x 3.66m)
UPVC window to garden aspect, double panel radiator, inner access to



En Suite Shower Room

Fitted in a three piece contemporary white suite comprising low level WC, pedestal wash hand basin with mixer tap, screened shower enclosure with independent shower unit fitted over, double panel radiator, ceramic tiling, recessed lighting, extractor, ceramic tiled flooring.

Bedroom 2

13' 0" x 10' 1" (3.96m x 3.07m)
A light double aspect room with UPVC windows to side and rear aspects, double panel radiator.

Bedroom 3

10' 10" x 10' 6" (3.30m x 3.20m)
UPVC window to front aspect, double panel radiator.

Bedroom 4

11' 9" x 7' 7" (3.58m x 2.31m)
UPVC window to front aspect, double panel radiator.

Family Bathroom

6' 9" x 6' 9" (2.06m x 2.06m)
Fitted in a three piece contemporary white suite comprising low level WC, pedestal wash hand basin with mixer tap, panel bath with hand mixer shower, extensive ceramic tiling, UPVC window, extractor unit, recessed lighting, double panel radiator, ceramic tiled flooring.

Outside

The property stands on a pleasantly arranged garden with an extensive lawned frontage with stocked borders and a brick paviour driveway sufficient for two vehicles accessing the **Single Garage** measures 20' 1" x 9' 11" (6.12m x 3.02m) with single up and over door, fuse box and master switch, power, lighting and private door to the side. The rear garden has an extensive paved terrace, area of lawn, outside tap and lighting. The garden is enclosed by a combination of panel fencing and brick walling with gated access to the parking area.

Tenure

Freehold
Council Tax Band - D

