

FOR SALE

Chiswick Court , Silver Crescent,
Gunnersbury, W4

Flat
West London

£450,000 lh

2  1  1 

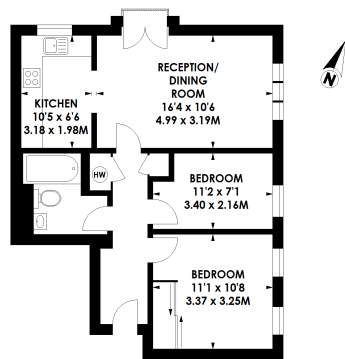


**horton
andgarton**

SALES / LETTINGS / PROPERTY MANAGEMENT

hortonandgarton.co.uk | Sales 020 3989 6464 | Lettings 020 3989 5454
161 Chiswick High Road, London, W4 2DT





SECOND FLOOR

CHISWICK COURT, SILVER CRESCENT, W4

Approximate Gross Internal Area

592 Sq' / 55 Sq.M

Floor Plan produced by Max Properties. ©. Tel: 020 3987 4514
Illustration for identification purposes only, not to scale.
All measurements are maximum and include wardrobes and window bays where applicable.

**horton
and garton**



Purpose built apartment | Lift access | 592 Sq' - 55 SqM | EPC rating C | Two bedrooms - One bathroom | Gunnersbury



hortonandgarton.co.uk
Sales 020 3989 6464
Lettings 020 3989 5454

161 Chiswick High Road, London, W4 2DT