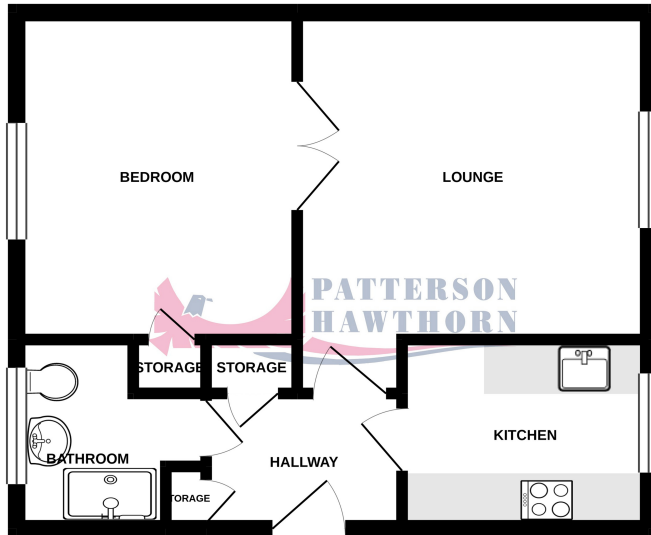
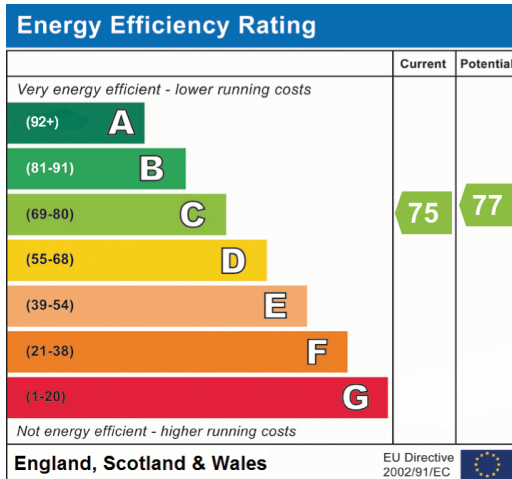


GROUND FLOOR  
373 sq.ft. (34.6 sq.m.) approx.



TOTAL FLOOR AREA: 373 sq.ft. (34.6 sq.m.) approx.  
Whilst every attempt has been made to ensure the accuracy of the floorplan contained here, measurements of doors, windows, rooms and any other items are approximate and no responsibility is taken for any error, omission or mis-statement. This plan is for illustrative purposes only and should be used as such by any prospective purchaser. The services, systems and appliances shown have not been tested and no guarantee as to their operability or efficiency can be given.  
Made with Metreage 10/2020



Appointments to view and offers to purchase must be made through Patterson Hawthorn. These particulars are produced for guidance only and do not form any part of an offer or Contract. These particulars, whilst believed to be accurate are to be used for guidance only and do not constitute any part of an offer or contract. Intending purchasers should not rely on them as statements of representation of fact, but must satisfy themselves by inspection or otherwise as to their accuracy. No person in the employment of Patterson Hawthorn has the authority to make or give any representation or warranty in respect of the property. Patterson Hawthorn have not tested any services or appliances in the property, prospective purchasers should satisfy themselves with regard to the working order of these.



01708 500 000

Rainham@pattersonhawthorn.co.uk

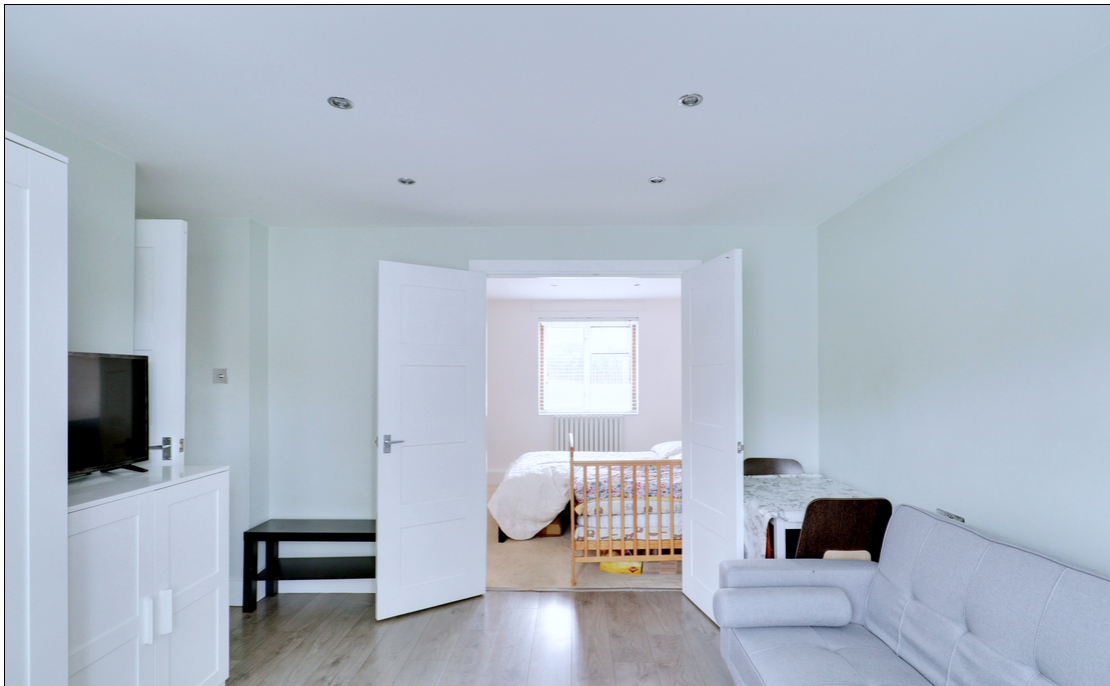


## Cherry Tree Lane, Rainham £210,000

- ONE BEDROOM GROUND FLOOR FLAT
- EXCELLENT CONDITION THROUGHOUT
- 11' x 9' DOUBLE BEDROOM
- MODERN CONTEMPORARY KITCHEN & SHOWER ROOM
- GAS CENTRAL HEATING
- 111 YEARS REMAINING ON LEASE
- AMPLE COMMUNAL PARKING
- COMMUNAL GARDENS FRONT & REAR
- EXTERNAL BRICK SHED



See our full selection of properties online at [www.pattersonhawthorn.com](http://www.pattersonhawthorn.com)



## **GROUND FLOOR**

### **Communal Entrance**

Via security phone entry system into:

### **Front Entrance**

Via hardwood door into:

### **Entrance Hall**

Inset spotlights to ceiling, two built in storage cupboards, radiator, wood grain effect tiled flooring.

### **Bathroom**

1.91m x 1.04m (6' 3" x 3' 5") Inset spotlights to ceiling, opaque double glazed windows to side, low level flush WC, hand wash basin with waterfall chrome mixer tap and a tiled surface, rainfall shower cubicle, chrome hand towel radiator, tiled walls, wood grain effect tiled flooring.



### **Kitchen**

2.05m x 1.89m (6' 9" x 6' 2") Double glazed windows to front, a range of matching wall and base units, laminate work surfaces, inset butler style sink and drainer with chrome mixer tap, space for double cooker, four ringed gas hob, extractor hood, space for free standing fridge freezer, integrated washing machine, laminate splash backs, wood grain effect tiled flooring.



### **Lounge / Diner**

3.61m x 3.39m (11' 10" x 11' 1") Inset spotlights to ceiling, double glazed windows to front, storage cupboard housing electric smart meter, radiator, wood grain effect laminate flooring.



### **Bedroom**

3.38m x 2.94m (11' 1" x 9' 8") Inset spotlights to ceiling, double glazed windows to rear, radiator, built in storage cupboard, fitted carpet.

## **EXTERIOR**

### **Exterior**

Communal parking to rear of property and a brick built shed.

