



**HOUSEFOX.CO.UK**

Full estate agency service at online prices

e: [sales@housefox.co.uk](mailto:sales@housefox.co.uk) | w: [www.housefox.co.uk](http://www.housefox.co.uk)



**Lower Norton Lane, Kewstoke, Weston-Super-Mare, Somerset, BS22 9YR**  
**£110,000**

01934 314242   01275 404601   01278 557700  
Viewings strictly by appointment



# HOUSEFOX.CO.UK

## Description

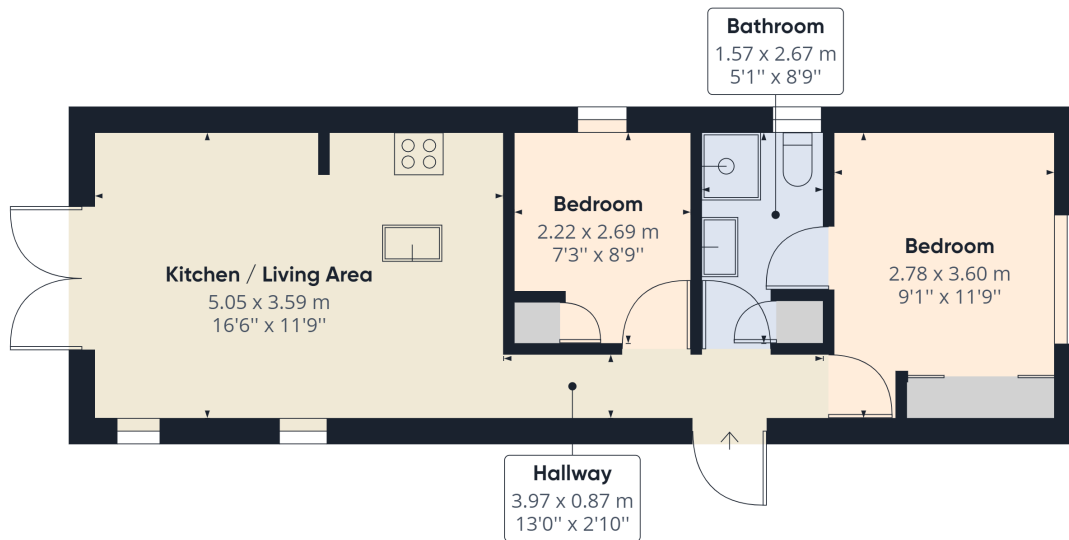
**HOLIDAY PARK HOME IN A VILLAGE LOCATION.....** This gorgeous holiday home is set in the village of Kewstoke, and within a 5 minute drive of Worle, which has an array of shops, cafes, restaurants, bank, convenience stores, and a 5 minute drive the opposite way and you are at the lovely Sand Bay beach, an amazing place for a stroll and walk the dogs.

The holiday lodge comprises hallway, lounge/fitted kitchen with appliances plus opening double doors (for the decking the seller is happy to talk through the size required, this will be extra), 2 bedrooms, bathroom, modern heating.

These holiday lodges, are not to be your main residence, a mortgage cannot be raised on them, but we believe their are companies that will provide finance.

The site will allow dogs, and the seller is happy to meet prospective buyers on the site to discuss all the fees and regulations

The new Retreat combines a sense of elegance and comfort, with its rustic features creating, quite literally, a retreat from the hustle and bustle of the real world. This home is a perfect blend of class and sophistication, without looking out of place surrounded by country side.



**Approximate total area<sup>(1)</sup>**  
455.39 ft<sup>2</sup>  
42.31 m<sup>2</sup>

(1) Excluding balconies and terraces

While every attempt has been made to ensure accuracy, all measurements are approximate, not to scale. This floor plan is for illustrative purposes only.

GIRAFFE360

A survey has not been carried out, nor have the services, appliances or fittings been tested. All measurements are approximate and should not be relied upon for furnishing purposes.