

Pecking Mill

Evercreech, BA4 6PG

COOPER
AND
TANNER



£650,000 Freehold

Welcome to a remarkable five bedroom link-detached house, nestled in the idyllic Pecking Mill, Evercreech

Pecking Mill

Evercreech

BA4 6PG

 5  2  3 EPC B

£650,000 Freehold

DESCRIPTION

Welcome to a truly remarkable five bedroom link-detached house, nestled in the idyllic Pecking Mill, Evercreech. This newly built home was constructed in 2018 and showcases a sleek and contemporary presentation throughout, offering a harmonious blend of modern aesthetics and functional design.

Spanning over three levels with thoughtful planning. Two of the bedrooms are discreetly tucked away on the second floor, providing a sense of privacy, one of which benefitting from its own en-suite bathroom. The remaining three bedrooms all equally well-appointed, are situated on the first floor with the master bedroom having the added advantage of its own en-suite ensuring convenience and accessibility for residents and guests. Four of the bedrooms provide enough space for double beds and furniture with the fifth being a large single.

The heart of this home is the open-plan kitchen, where a striking brick feature wall adds character and charm. It is equipped with the latest fixtures and fittings, providing the perfect backdrop for your culinary adventures. Whether it's casual family meals or hosting grand dinner parties, this home has the space to accommodate it all.

One unique feature of this property is the integral garage, which has been ingeniously transformed into an indoor bar, adding a touch of entertainment and luxury to your daily life. Imagine hosting gatherings and celebrations in this tastefully designed space, creating unforgettable memories with friends and family.

The presentation of this home is nothing short of immaculate. Every corner has been meticulously maintained, ensuring that you can move in and start enjoying the epitome of comfortable and contemporary living without the need for immediate updates or renovations.

The interior design is spacious, airy, and thoughtfully executed, ensuring that each room feels welcoming and functional. The neutral colour palette and clean lines create a canvas for personalisation, allowing you to make this space truly your own. The venting skylights help fill the interior space with natural light.

One of the most exciting aspects of this property is the opportunity it presents for customisation. As the new owner, you have the chance to tailor the space to your unique preferences and lifestyle. Whether it's a home office, a dedicated fitness area, or any other dream project you have in mind, this house is ready to accommodate your vision.

In short, this home in Evercreech, is a modern showpiece with contemporary presentation throughout. This home is a unique blend of style, functionality, and entertainment. With a spacious interior and the opportunity for customisation, it's a canvas waiting for your personal touch. Contact us today to arrange a viewing and embark on the journey of making this house your dream home.

TENURE

Freehold

COUNCIL TAX BAND

F

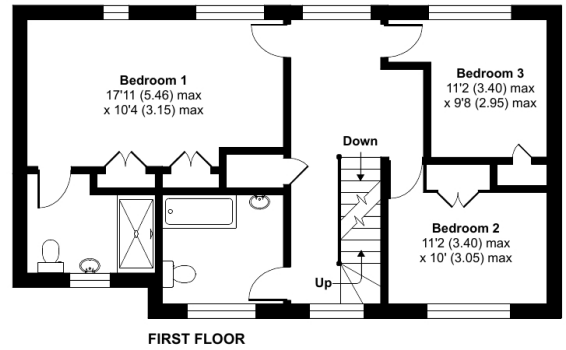
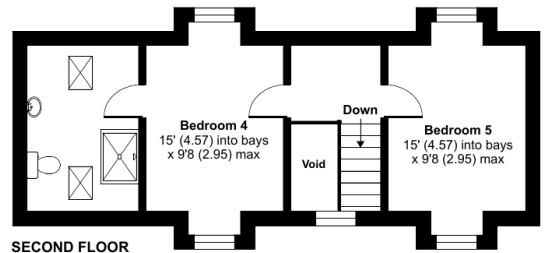
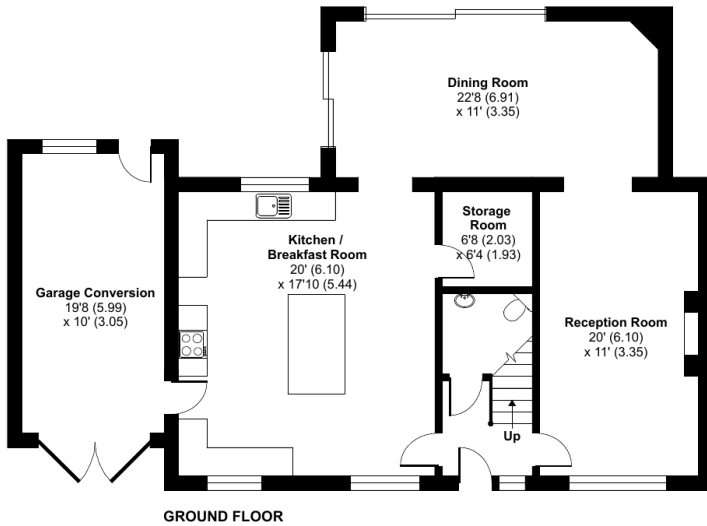




Pecking Mill, Evercreech, Shepton Mallet, BA4

Approximate Area = 2317 sq ft / 215.2 sq m (includes garage conversion & excludes void)

For identification only - Not to scale



Floor plan produced in accordance with RICS Property Measurement Standards incorporating International Property Measurement Standards (IPMS2 Residential). © nitchecom 2023. Produced for Cooper and Tanner. REF: 1053676

CASTLE CARY OFFICE

Telephone 01963 350327

Fore Street, Castle Cary, Somerset BA7 7BG

castlecary@cooperandtanner.co.uk

**COOPER
AND
TANNER**

Important Notice: These particulars are set out as a general outline only for the guidance of intended purchasers and do not constitute, nor constitute part of, an offer or contract. All descriptions, dimensions, reference to condition and necessary permissions for use and occupation, warranties and other details are given without responsibility and any intending purchasers should not rely on the m as statements or representations of fact but must satisfy themselves by inspection or otherwise as to the correctness of each of them.

