

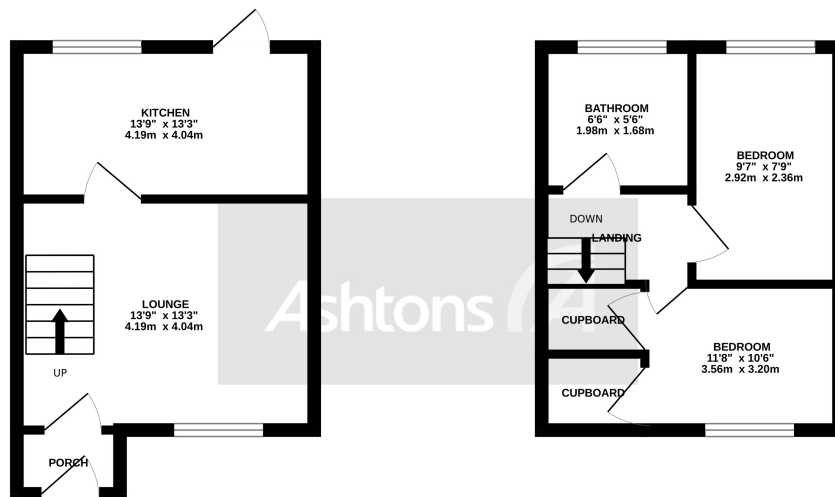
New



Dove Close, Birchwood. WA3 6RZ. Offers Over £160,000

Great Access To Train Stations/Motorway Links | Ideal first home | Tucked away in a really quiet cul-de-sac |

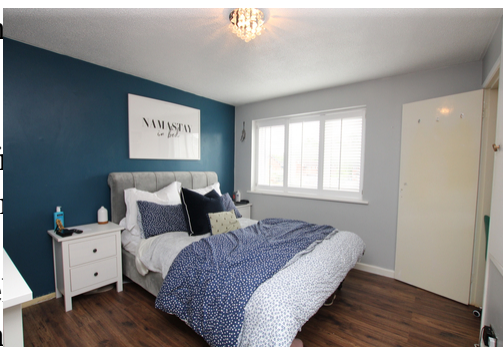




Whilst every attempt has been made to ensure the accuracy of the floorplan contained here, measurements of doors, windows, rooms and any other items are approximate and no responsibility is taken for any error, omission or mis-statement. This plan is for illustrative purposes only and should be used as such by any prospective purchaser. The services, systems and appliances shown have not been tested and no guarantee as to their operability or efficiency can be given.
Made with Metropix ©2023

As you enter the property, you are greeted by a porch with door to the spacious living room. The room has been tastefully decorated with neutral tones, making it easy to add your own personal touch. The living room leads through to the kitchen and a single door leads to the rear garden.

Upstairs, there are two well-proportioned bedrooms, both of which are doubles. The master bedroom is a good size and benefits from large windows, which flood the room with natural light and a good amount of storage which one section is utilised as a snug office. The second bedroom is also a good size and comfortably fits a double bed.



Contact your local office to arrange a viewing:

Padgate: 01925 479334
Great Sankey: 01925 454300
Winwick: 01925 232146
Stockton Heath: 01925 453400
St.Helens: 01744 754120
Wigan: 01942 498862
Culcheth: 01925 764744
Ashton-In-Makerfield: 01942 364446
Newton-Le-Willows: 01925 907770
Commercial Office: 01925 907709
Lettings Head Office: 01925 873533
Financial Services: 01925 221234

Viewing Arrangements

Viewing is strictly by appointment only through Ashtons Estate Agency.

Disclaimer Property Details

These particulars, whilst being believed to be accurate are set out as a general outline only for guidance and do not constitute any part of an offer or contract. Intending purchasers should not rely on them as statements of representation of fact, but must satisfy themselves by inspection or otherwise as to their accuracy. We have not carried out a detailed survey nor tested the services, appliances and specific furnishings. The measurements given are approximate. No person in this firm's employment has the authority to make or give any representation or warranty in respect of the property.

All details, photographs and floorplans are the copyright of Ashtons Estate Agency.



How much you can borrow?
Speak to a mortgage expert in your local office.

Ashtons Financial Services

Ashtons

Ashtons.net rightmove

PrimeLocation.com Zoopla.co.uk