



BarrettMove



**81 Marlow Bottom, Marlow, Buckinghamshire SL7 3NA
Offers in Region of £675,000 - Freehold**



PROPERTY SUMMARY

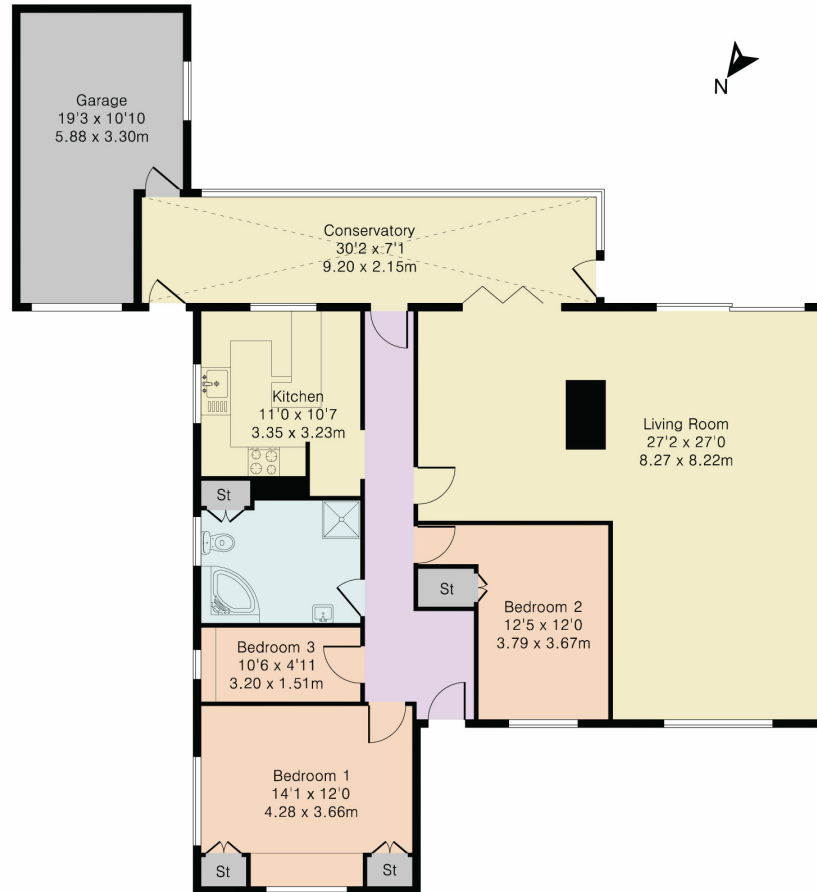
Barrett Move offers this three bedroom detached bungalow with a large south facing garden, off street parking and garage in Marlow Bottom.

POINTS OF INTEREST

- *****CHAIN FREE*****
- Requires modernisation
- Large sloping south facing garden with woodland behind
- Garage and off road parking
- Close to village amenities and woodland walks
- Short walk to Burford School
- Opportunity to create a special family home



Approximate Gross Internal Area 1694 sq ft – 157 sq m



Ground Floor



Although Pink Plan Ltd ensures the highest level of accuracy, measurements of doors, windows and rooms are approximate and no responsibility is taken for error, omission or misstatement. These plans are for representation purposes only as defined by RICS code of measuring practise. No guarantee is given on total square footage of the property within this plan. The figure icon is for initial guidance only and should not be relied on as a basis of valuation.

Energy Efficiency Rating		Current	Potential
<i>Very energy efficient - lower running costs</i>			
(92+)	A		
(81-91)	B		
(69-80)	C		78
(55-68)	D	59	
(39-54)	E		
(21-38)	F		
(1-20)	G		
<i>Not energy efficient - higher running costs</i>			
England, Scotland & Wales		EU Directive 2002/91/EC	