



Larch Grove, Sidcup, Kent,
Guide Price From £400,000

Council Tax Band - E
Energy Efficiency Rating -

Christopher
Russell
PROPERTY SERVICES

Guide Price From £400,000 to £425,000.

Two double bedroom terrace house situated in the popular Hollies development which is ideally located for Sidcup train station.

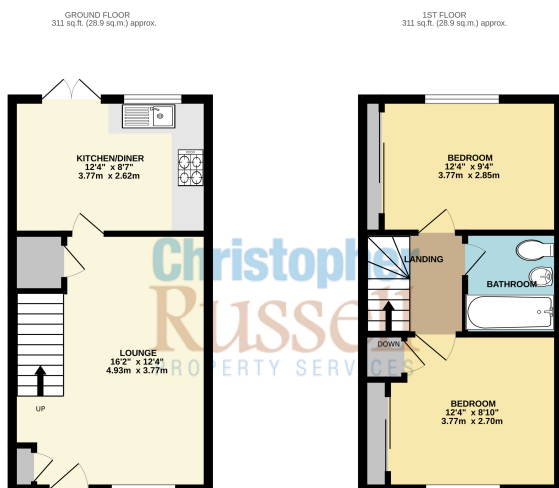
Positioned at the end of a cul de sac the property has been recently modernised and presented in excellent decorative condition the property comprises; though lounge/diner, kitchen on the ground floor and two double bedrooms and a bathroom on the first floor.

Features include gas central heating, double glazing, modern fitted kitchen and bathroom suite.

There is a rear garden extending approximately 40ft and allocated parking to the front.

There is an annual compulsory charge for the Hollies Leisure Centre of £1,000 per annum.

Council Tax Band E.



TOTAL FLOOR AREA: 602 sq.ft. (57.0 sq.m.) approx.
Where every effort has been made to ensure the accuracy of the figures contained here, measurements of areas, volumes, levels and any other items are approximate and no responsibility is taken for any error, omission or misstatement. This plan is for information purposes only and should be used in conjunction with any other information provided. The prices are approximate and subject to change without notice.
Mark with Message 02022



Viewing by appointment only

Christopher Russell | 33, The Oval | DA15 9ER
T: 020 8300 1234 | E: sales@christopher-russell.co.uk
www.christopher-russell.co.uk

**Christopher
Russell**
PROPERTY SERVICES