







- Redrow Cambridge
- High Specification
- Lounge
- Large Kitchen Dining Room
- Utility Room
- Four Bedrooms
- Two Bath/Shower Rooms
- Low Maintenance Garden
- Detached Garage & Driveway

### Description

REDROW CAMBRIDGE. A very popular design and upgraded and improved by current owners. Gas central heating and PVCu double glazing. Entrance hall, cloakroom/WC, lounge with connecting folding doors to large kitchen dining room with quality fitted kitchen units, built-in appliances and a fitted media wall. Utility room. First floor landing, master bedroom with fitted wardrobes and en-suite shower room. Three further bedrooms and family bathroom. Low maintenance rear garden with artificial lawn. Detached garage and long driveway.





Location  
Tenure

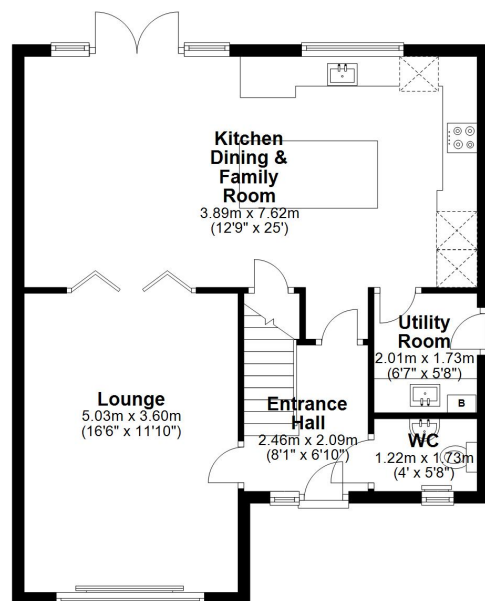
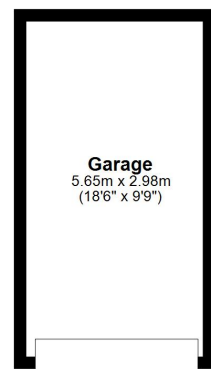
EPC Rating: B





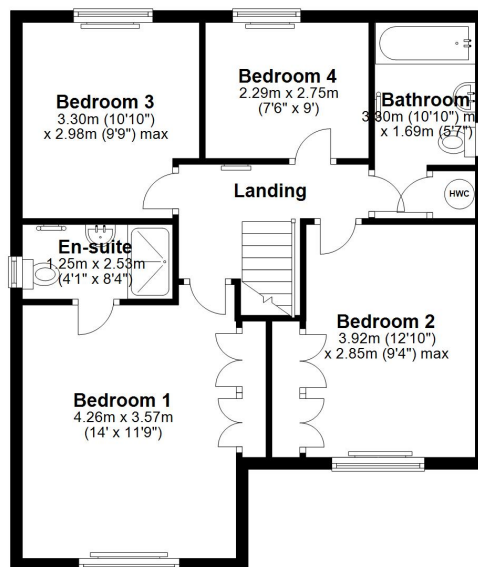
## Ground Floor

Approx. 78.7 sq. metres (846.9 sq. feet)



## First Floor

Approx. 61.9 sq. metres (666.0 sq. feet)



Total area: approx. 140.5 sq. metres (1512.9 sq. feet)



Williams Estates is the trading name of Williams Estates (Ltd). Registered address 33, The Green, Hartford, Northwich, Cheshire, CW8 1QA.

Reg number 07682683. Director Andrew P Williams