



55 Birkdale, Bexhill-on-Sea, East Sussex, TN39
3TL

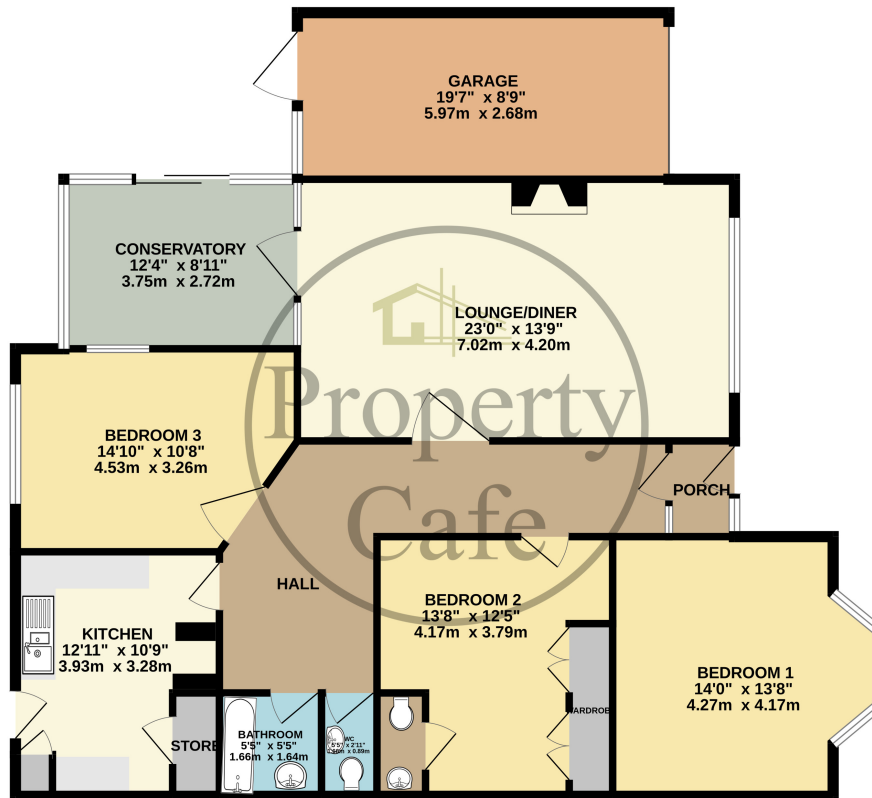
£479,995



- Offering excellent scope and potential
- Three bedroom detached bungalow
- Three good size bedrooms
- Triple aspect lounge diner with fireplace
- Good size inner hallway with ample storage
- Basic kitchen and bathroom/separate WC
- Single attached garage to the side
- South facing conservatory
- Spacious property and realistic asking price
- Central heating and double glazing throughout
- Block paved drive to the front
- Ample storage and large loft space
- South facing garden(In need of attention)
- Sought After & Convenient Location
- Excellent scope and potential
- Call Our Bexhill Sales Team (01424 224488)



GROUND FLOOR
1455 sq.ft. (135.2 sq.m.) approx.



TOTAL FLOOR AREA : 1455 sq.ft. (135.2 sq.m.) approx.

Whilst every attempt has been made to ensure the accuracy of the floorplan contained here, measurements of doors, windows, rooms and any other items are approximate and no responsibility is taken for any error, omission or mis-statement. This plan is for illustrative purposes only and should be used as such by any prospective purchaser. The services, systems and appliances shown have not been tested and no guarantee as to their operability or efficiency can be given.
Made with Metropix ©2024

