



NEWSON & BUCK
ESTATE AGENTS



NEWSON & BUCK
ESTATE AGENTS



Home Farm The Barn, Gayton Road, East Winch, King's Lynn, Norfolk PE32 1LH

£650,000

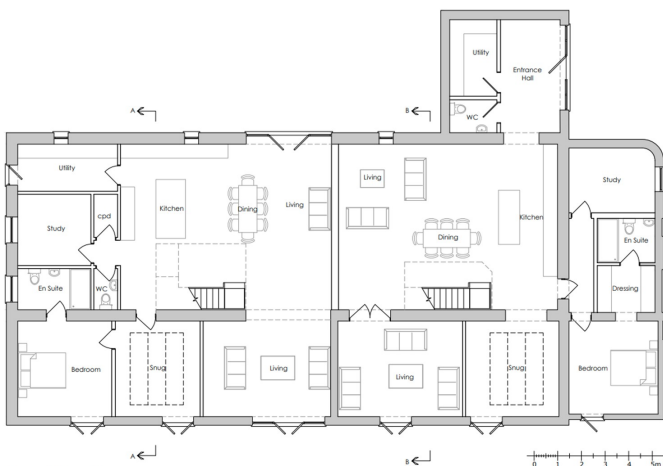
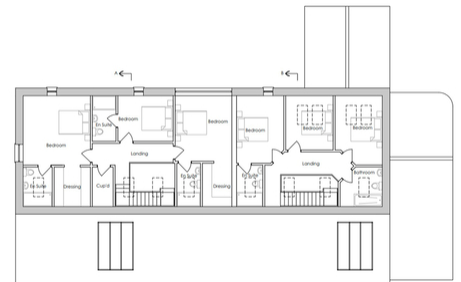
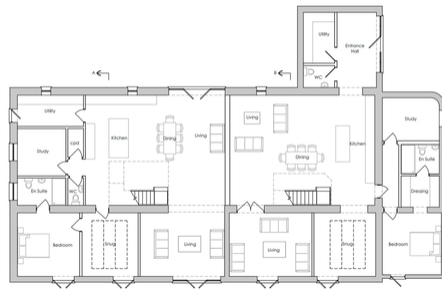
An exciting opportunity to purchase a striking Barn for conversion situated in an idyllic location. Planning permission has been granted for a pair of semi-detached Barns offering spacious accommodation. The planning reference number is 21/01093/F. The property will benefit from off road parking, rear garden and stunning field views. Please enquire for further information.



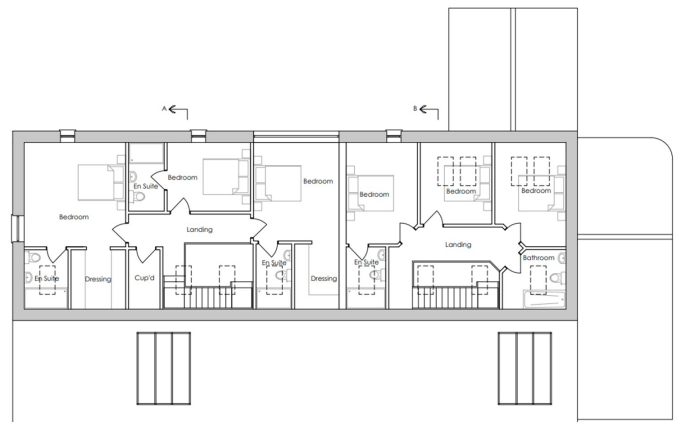
01553 775151



Please enquire for further details



Ground Floor Plan 1:100



First Floor Plan 1:100