





- Entrance Hall
- Good Size Lounge
- Kitchen Dining Room
- Four Bedrooms
- Modern Bathroom
- Good Size Gardens
- Parking for Two Cars

Description

A deceptively spacious four bedroom semi-detached house, situated on this popular development. The property is offered in excellent decorative condition and has modern units in the kitchen and quality fittings in the bathroom and cloakroom. With PVCu double glazing and central heating comprises: Entrance hall, cloakroom with WC, good size open plan lounge, well fitted kitchen dining room, four bedrooms and modern bathroom. Outside to the front there is an open plan garden and parking for two cars, whilst to the rear there is an enclosed garden.



Location

Local amenities are well catered for and include Winnington Convenience Store and the BP petrol station, which provide all the necessary day to day essentials and there is a new local centre with more facilities on the Winnington Urban Village. Winnington Park Community Primary School serves the area and there are two local high schools located in Hartford and Weaverham, these schools are rated 'good' in the current Ofsted reports. Two railway stations serve the area with the West Coast Main Line service running through Hartford, enabling access to London within two hours. Trains to Manchester and Chester run from Greenbank and Northwich stations. The A556 and A49 easily facilitate access to the region's major road network with Manchester and Liverpool airports both within 20 miles.

Tenure

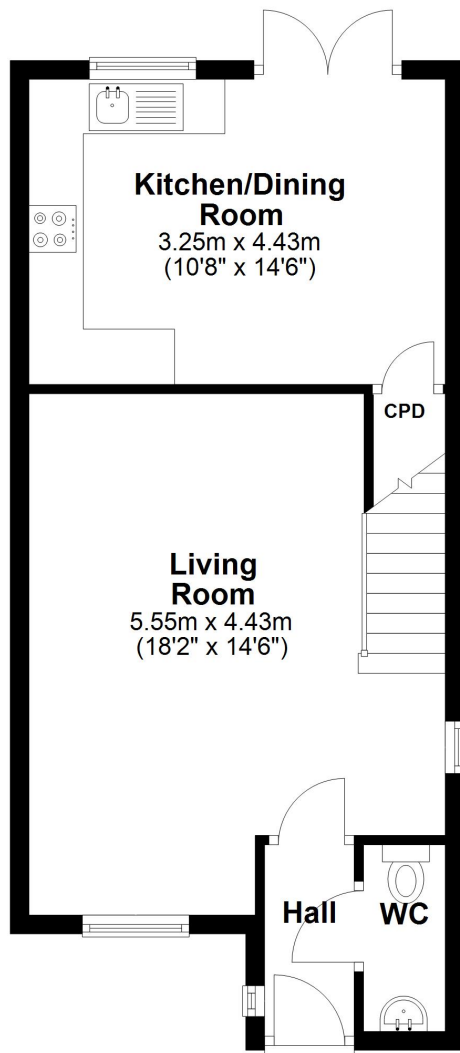
FREEHOLD

EPC Rating: D



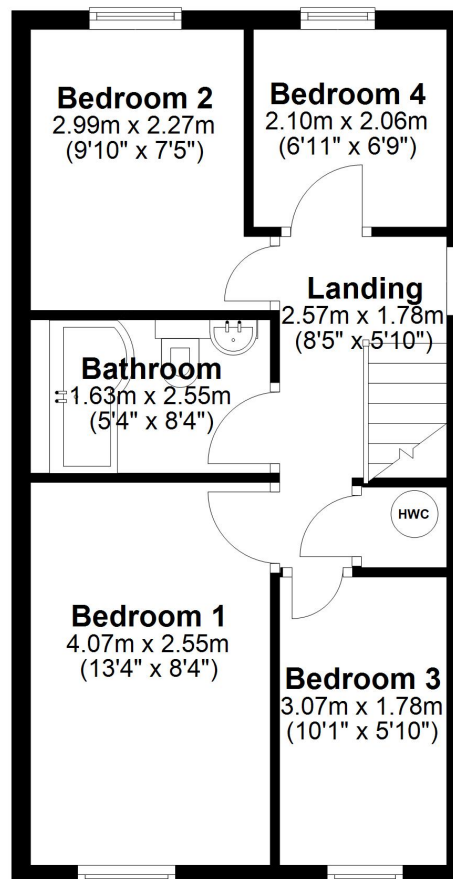
Ground Floor

Approx. 41.8 sq. metres (449.4 sq. feet)



First Floor

Approx. 39.4 sq. metres (423.8 sq. feet)



Total area: approx. 81.1 sq. metres (873.2 sq. feet)



Williams Estates is the trading name of Williams Estates (Ltd). Registered address 33, The Green, Hartford, Northwich, Cheshire, CW8 1QA.

Reg number 07682683. Director Andrew P Williams