

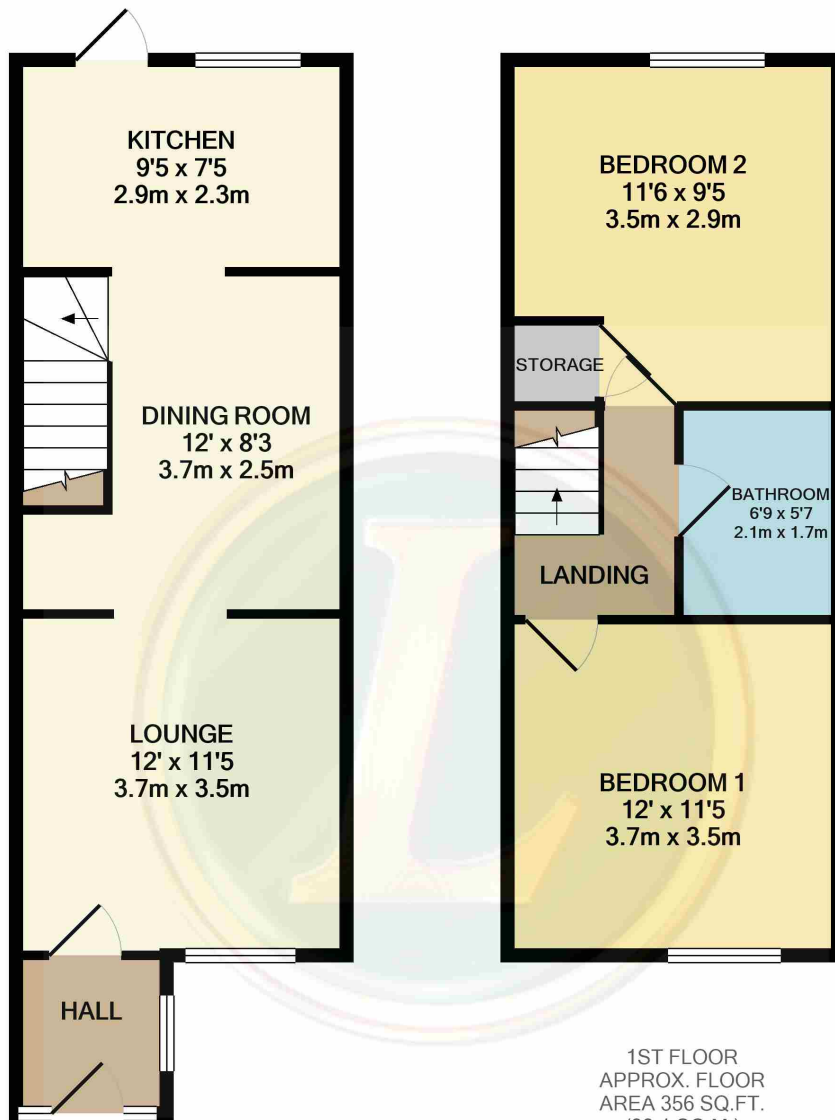


72 Church Street, Langford, Bedfordshire, SG18 9QA

£255,000

Attractive end of terrace Victorian cottage which has been extended to provide great accommodation. Welcoming entrance porch, lounge with log burner plus dining room, kitchen overlooking rear garden. Upstairs are two good sized bedrooms plus a bathroom. Outside is a double width garden plus two parking spaces. NO CHAIN VIEW TODAY





GROUND FLOOR
APPROX. FLOOR
AREA 384 SQ.FT.
(35.7 SQ.M.)

TOTAL APPROX. FLOOR AREA 740 SQ.FT. (68.8 SQ.M.)

Whilst every attempt has been made to ensure the accuracy of the floor plan contained here, measurements of doors, windows, rooms and any other items are approximate and no responsibility is taken for any error, omission, or mis-statement. This plan is for illustrative purposes only and should be used as such by any prospective purchaser. The services, systems and appliances shown have not been tested and no guarantee as to their operability or efficiency can be given

Made with Metropix ©2020

- NO CHAIN
- NEW ENTRANCE PORCH
- LOUNGE WITH LOG BURNER
- DINING ROOM
- KITCHEN WITH STABLE DOOR TO GARDEN
- TWO GOOD SIZE BEDROOMS
- UPSTAIRS BATHROOM
- OFF ROAD PARKING FOR 2 CARS
- DOUBLE WIDTH REAR GARDEN

