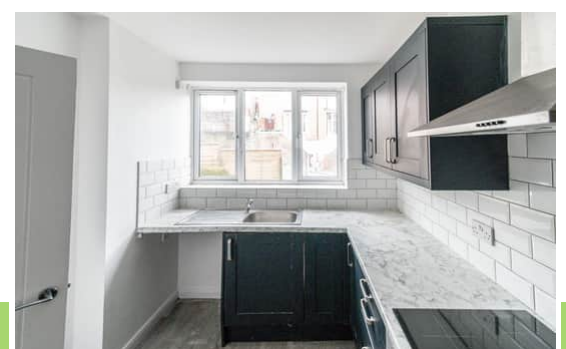




Flat 2 Windsor Court, Mount Pleasant, Swansea, SA1 6EF

Asking Price: £109,950

- A Ground And First Floor Maisonette
- No Forward Chain
- Ideal First Time Purchase Or Investment Opportunity
- Two Bedrooms
- Convenient City Centre Location
- Allocated Rear Parking



Entrance Hallway

Entered via double glazed front door with matching glazed side panel to hallway, staircase to the first floor, medium oak effect laminate flooring and doors to:-

Kitchen

3.912m x 2.835m (12' 10" x 9' 4")

A fully fitted and well presented modern kitchen with a selection of matching base and wall units with marble effect roll top work surface space and preparation area incorporating single drainer sink unit with hot and cold mixer taps over, built in electric cooker, 4 ring induction hob and stainless steel extractor canopy over, space for fridge freezer, plumbing for automatic washing machine, part tiled walls and double glazed window to front aspect.

Lounge

4.983m x 4.155m (16' 4" x 13' 8")

A good size room with understairs storage space, electric heater and double glazed window to the rear.

First Floor Landing

With doors to:-

Bedroom One

4.476m x 4.335m (14' 8" x 14' 3")

With built in airing cupboard space and double glazed window to the rear.

Bedroom Two

4.309m x 2.905m (14' 2" x 9' 6")

With double glazed window to the front.

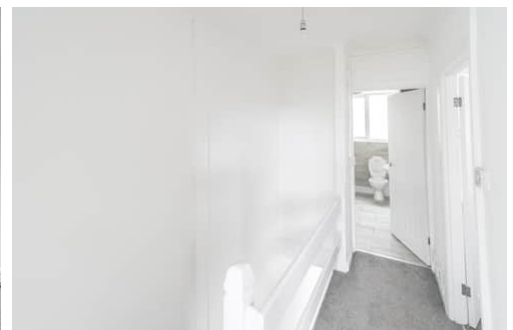
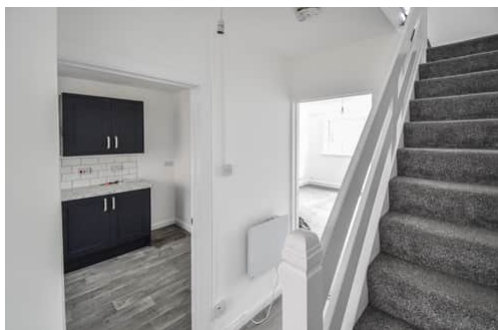
Bathroom

2.840m x 1.735m (9' 4" x 5' 8")

A three piece modern suite comprising panel bath with electric shower over and glazed side screen, low level w.c, wash hand basin, fully tiled walls, ceramic tile flooring and double glazed frosted window to front aspect.

Disclaimer

Whilst these particulars are believed to be accurate, they are set for guidance only. Fresh have not tested any fixtures, fittings or services and cannot confirm that they are in working order or fit for purpose. Any floor plan provided is intended as a general guide to the layout of the accommodation and is not drawn to scale. We cannot confirm the tenure of the property is accurate and advise all buyers to obtain verification from their solicitor or surveyor. We strongly recommend that all the information which we provide about the property is verified by yourself or your adviser.



FRESH

We deliver on Service ...

