



Fairfield Road, East Grinstead, RH19

HOUND & PORTER
FIND A HOUSE. MAKE IT HOME

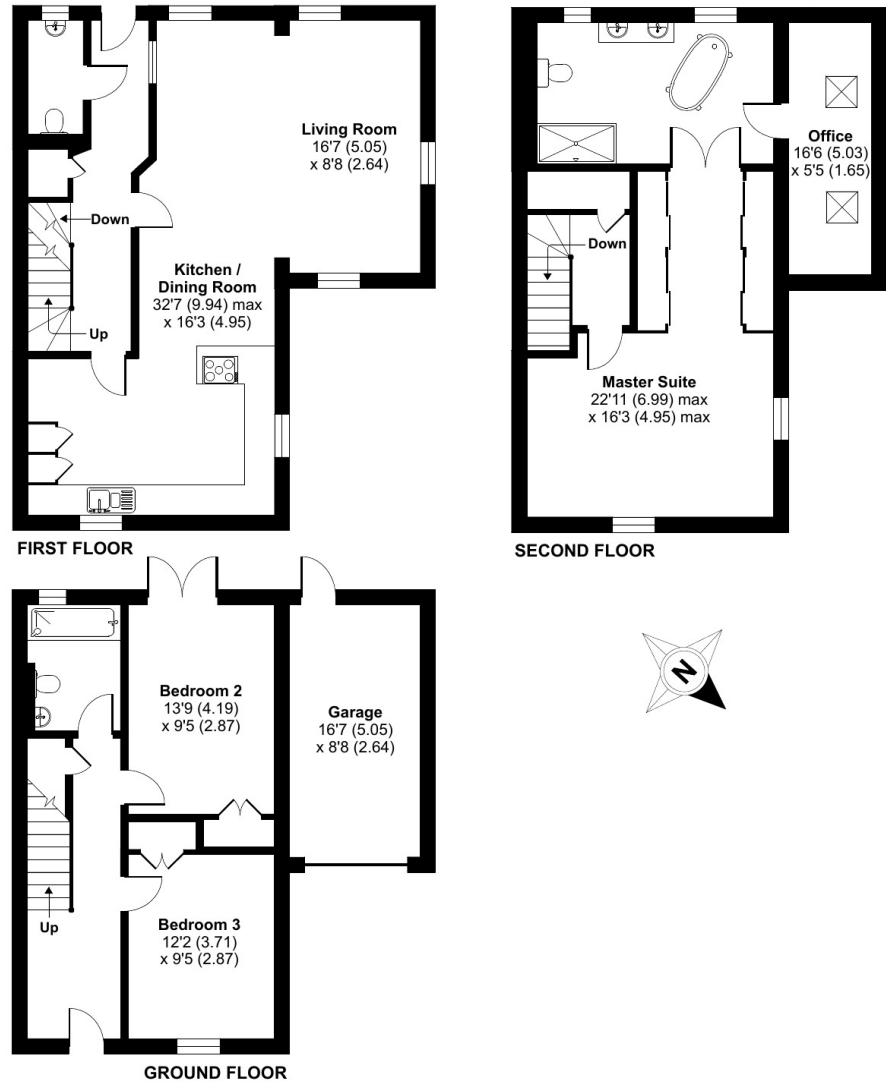
Fairfield Road, East Grinstead, RH19



- Incredibly desirable gated development
- Fantastic open plan living
- Bright and airy fitted kitchen
- Garage with private driveway for up to four cars
- Landscaped rear garden
- Good size double bedrooms

Aspen Court, Fairfield Road, East Grinstead, RH19

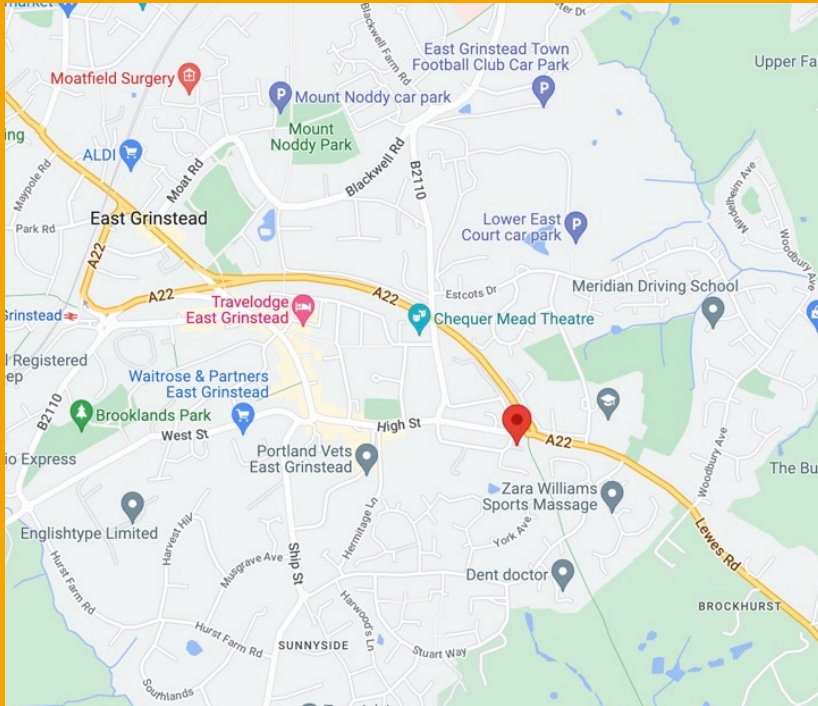
Approximate Area = 1805 sq ft / 167.7 sq m
Garage = 145 sq ft / 13.5 sq m
Total = 1950 sq ft / 181.2 sq m
For identification only - Not to scale



We urge you to take a peek inside this fantastic modern family home situated just outside East Grinstead town centre within a highly desirable gated community. Step over the threshold and you immediately get a feeling of a lovely family home with incredibly flexible accommodation arranged over three floors. The ground floor consists of two double bedrooms and a family bathroom, the rear bedroom with French doors to the landscaped garden. Off a spacious first floor landing is a huge, triple aspect, living room and a fitted kitchen/dining room. This really is the hub of this home with high gloss white units, integrated appliances, including a five-ring gas hob and plenty of space for a dining table.

The top floor has been re-designed from two bedrooms with two bathrooms, to an incredible master suite with soft seating area, dressing room and a fantastic five-piece ensuite. Also hidden away is an office with Velux windows offering tremendous views over greenbelt. The rear garden is private and secluded and has been tastefully designed with power and subtle lighting to the entertaining space. With an integral garage and parking for up to four cars and underfloor heating throughout, this is a fantastic, modern family home.

Fairfield Road, East Grinstead, RH19



LOCATION

The popular market town of East Grinstead is located approximately halfway between London and the South Coast, boasts a wealth of architectural heritage, and is surrounded by some of the finest countryside in the Southeast, including the Ashdown Forest. There is a vast selection of shops, pubs, restaurants, and coffee shops to cater for all. East Grinstead mainline train station provides frequent services to London in approx. one hour. Ideally situated for access to the M23/M25 motorway and Gatwick Airport.

TRANSPORT

Within easy reach of the A22, M23 and Gatwick Airport with a bus service providing access to East Grinstead, Lingfield and Forest Row.

DISTANCE TO STATIONS FROM PROPERTY BY ROAD

• 0.9 miles to East Grinstead Station • 3.1 miles to Dormansland Station • 4.6 miles to Lingfield Station



DID YOU LIKE WHAT YOU'VE JUST SEEN?

Get in touch. We are more than happy to arrange a viewing, assist you with the complicated paperwork and find you the best local businesses to help during and after your move. We look forward to hearing from you.

58 Castle Walk
Reigate, Surrey
RH2 9PX

01737 317880
hello@houndandporter.co.uk