



## **BESSEMER PLACE, GREENWICH, LONDON SE10 OGP**

**£2,400  
PCM**

Located moments from the 02 Arena and North Greenwich tube station this two bedroom apartment is situated in the heart of the Greenwich Peninsula. The apartment boasts a perfect specification, stylish kitchen with fully integrated appliances open plan to reception/dining room providing access to balcony. Two double bedrooms with master boasting en-suite shower room and access to large private terrace and further bathroom. This is the fusion of riverside living and in a superb location.

**VIEWING BY APPOINTMENT WITH 1ST AVENUE. CALL: 020 8293 8600**

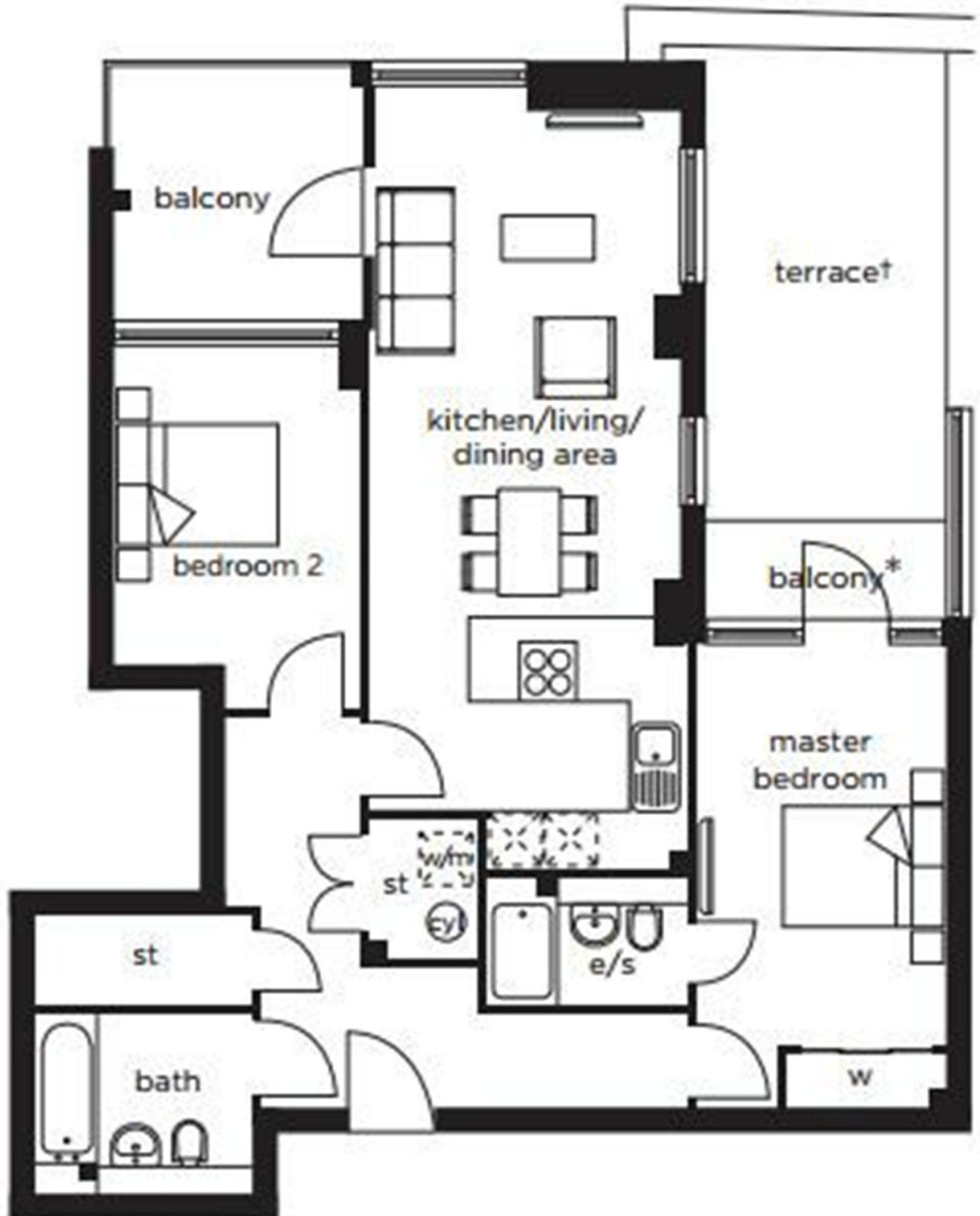
Offered furnished and available from 24th April 2024.

email: [info@1stavenue.co.uk](mailto:info@1stavenue.co.uk)

[www.1stavenue.co.uk](http://www.1stavenue.co.uk)

**29, 17 BESSEMER PLACE,  
GREENWICH, LONDON  
SE10 0GP**

**£2,400 PCM**



**VIEWING BY APPOINTMENT  
WITH 1ST AVENUE.**

**CALL: 020 8293 8600**

**1stavenue**  
Real Estate Services