



Russell Street, Reading, Berkshire. RG1.

£1,100 pcm

Arins Property Services - Ground floor one bedroom flat within easy walking distance to Reading Town Centre and mainline train station. Available now and comes unfurnished with appliances. The property opens into to an open plan living / kitchen room, through to WC, that then leads onto double bedroom and en-suite shower room.

- Walking Distance To Reading Station and Town Centre
- Ground Floor Flat
- Open Plan Kitchen Sitting Room
- Bedroom
- Available Now
- Unfurnished
- Shower Room
- Appliances Included



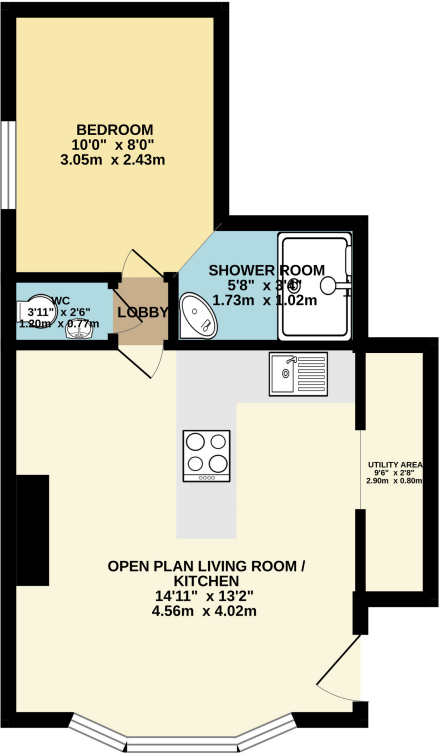
Russell Street, Reading, Berkshire. RG1.



Have you visited our website for our latest property listings?
www.arins.co.uk



GROUND FLOOR
335 sq.ft. (31.1 sq.m.) approx.



TOTAL FLOOR AREA: 335 sq.ft. (31.1 sq.m.) approx.
Whilst every attempt has been made to ensure the accuracy of the floorplan contained here, measurements of doors, windows, rooms and any other items are approximate and no responsibility is taken for any error, omission or mis-statement. This plan is for illustrative purposes only and should be used as such by any prospective purchaser. The services, systems and appliances shown have not been tested and no guarantee as to their operability or efficiency can be given.
Made with Murray 2020/21

Property Description

Ground Floor

Communal Hallway

Entrance to Flat

Open Plan Lounge / Kitchen

13' 2" x 14' 11" (4.01m x 4.55m)
Large front aspect bay window. Range of base and wall units with worksurface over. Fitted electric hob and oven. Kitchen sink and drainer. Opening to Utility Area. Door to Inner Lobby.

Utility Area

2' 8" x 9' 6" (0.81m x 2.90m)
Washing machine & Fridge freezer.

Inner Lobby

Access to WC and Bedroom.

WC

Low level WC and wash hand basin.

Bedroom

8' 0" x 10' 0" (2.44m x 3.05m)
Side aspect window. Opening to Shower Room.

Shower Room

3' 4" x 5' 8" (1.02m x 1.73m)
Shower cubicle and corner wash hand basin.

Council Tax Band

A

