



KUBIE GOLD
ASSOCIATES

DORSET SQUARE MARYLEBONE NW1



- ONE BEDROOM
- VERY SPACIOUS
- SPLIT LEVEL

- WOOD FLOORS
- NEWLY REDECORATED
- AVAILABLE IMMEDIATELY

£550 per week

SALES, LETTINGS & PROPERTY MANAGEMENT

Tel:

020 7563 7272

36 Ivor, Regents Park, London, NW1 6EA

Email: info@kubie-gold.co.uk Website: www.kubie-gold.co.uk

Kubie Gold Associates is the trading name of Kubie Gold Associates Ltd
Company Registration No. 7271501 registered in England and Wales

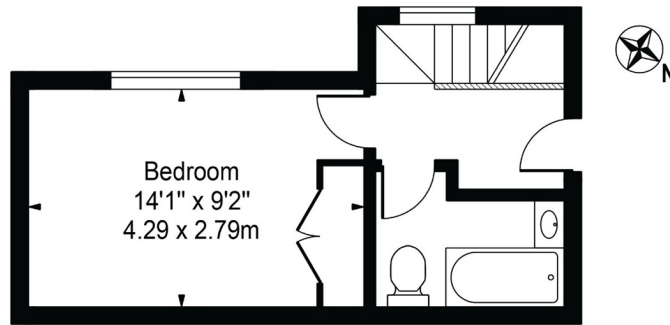


Dorset Square, NW1

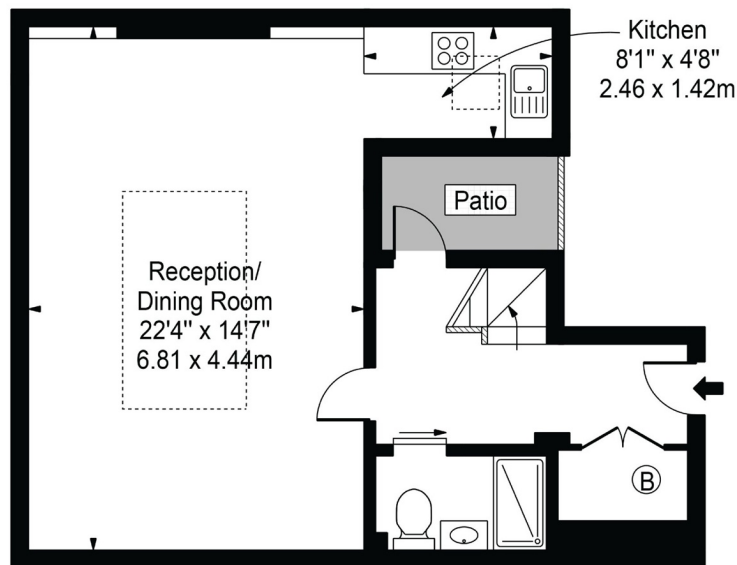
Very bright and spacious recently redecorated one bedroom apartment in period conversion, located on popular garden square, property is set over two floors (ground and lower ground), boasts large reception with sky lights, double bedroom with fitted wardrobes, fully fitted kitchen, property benefits from two bathrooms, full family bathroom and separate shower room, located within easy reach of Marylebone and Baker street tube stations, available immediately.

Dorset Square

Approx. Gross Internal Area 725 Sq Ft - 67.35 Sq M



Raised Ground Floor



Ground Floor

For Illustration Purposes Only - Not To Scale

This floor plan should be used as a general outline for guidance only and does not constitute in whole or in part an offer or contract. Any intending purchaser or lessee should satisfy themselves by inspection, searches, enquiries and full survey as to the correctness of each statement. Any areas, measurements or distances quoted are approximate and should not be used to value a property or be the basis of any sale or let.

Local Authority:

Westminster

Tax Band:

Band D

Energy Efficiency Rating		Current	Potential
Very energy efficient - lower running costs			
(92-100)	A		
(81-91)	B		
(69-80)	C		77
(55-68)	D	55	
(39-54)	E		
(21-38)	F		
(1-20)	G		
Not energy efficient - higher running costs			
England, Scotland & Wales		EU Directive 2002/91/EC	

