

For Sale



Davis & Gibbs

Trinity Road, Tooting £425,000



This beautiful ground floor period property situated within a short walk to Wandsworth common and station is being presented to the market unoccupied and chain free. The property benefits from having a private garden, a long lease of 999 years and a share of the freehold. With bay windows, large rooms and high ceilings, this property carries an abundance of character. The property is in good condition, the garden is a great size and transport links are excellent. In less than five minutes you can find your self on Tooting High Street which has an array of shopping facilities and transport links. Call now to register your interest on 0208 772 9818.

Davis & Gibbs - 2C Chestnut Grove - London - SW12 8JD
0208 772 9818 - info@davisandgibbs.com - www.davisandgibbs.com

Ground Floor



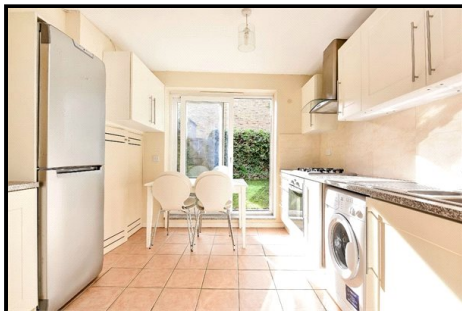
Bedroom

High ceilings, built in storage, bay window and wooden floors.



Bathroom

Modern, neat bathroom with three piece suite and shower over bath.



Kitchen

Tiled floor, overhead and under cupboard storage. Sliding glass doors leading out to the private garden.



Garden

Private garden, part paved part grass.



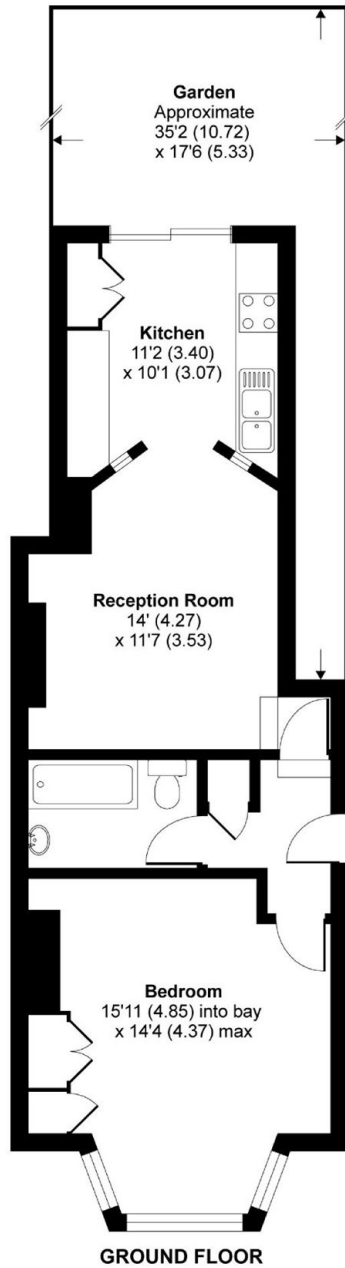
Reception

Large reception, fireplace and built in shelves in the alcoves. Wooden floors and cream walls.



Trinity Road, Tooting, London, SW17

APPROX. GROSS INTERNAL FLOOR AREA 556 SQ FT 51.6 SQ METRES



Whilst every attempt has been made to ensure the accuracy of the floor plan contained here, measurements of doors, windows and rooms are approximate and no responsibility is taken for any error, omission or misstatement. These plans are for representation purposes only as defined by RICS Code of Measuring Practice and should be used as such by any prospective purchaser. Specifically no guarantee is given on the total square footage of the property if quoted on this plan. Any figure given is for initial guidance only and should not be relied on as a basis of valuation.

Copyright nichecom.co.uk 2017 Produced for Davis & Gibbs REF : 224390

