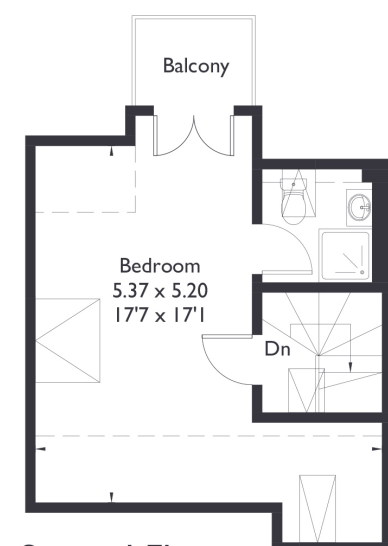
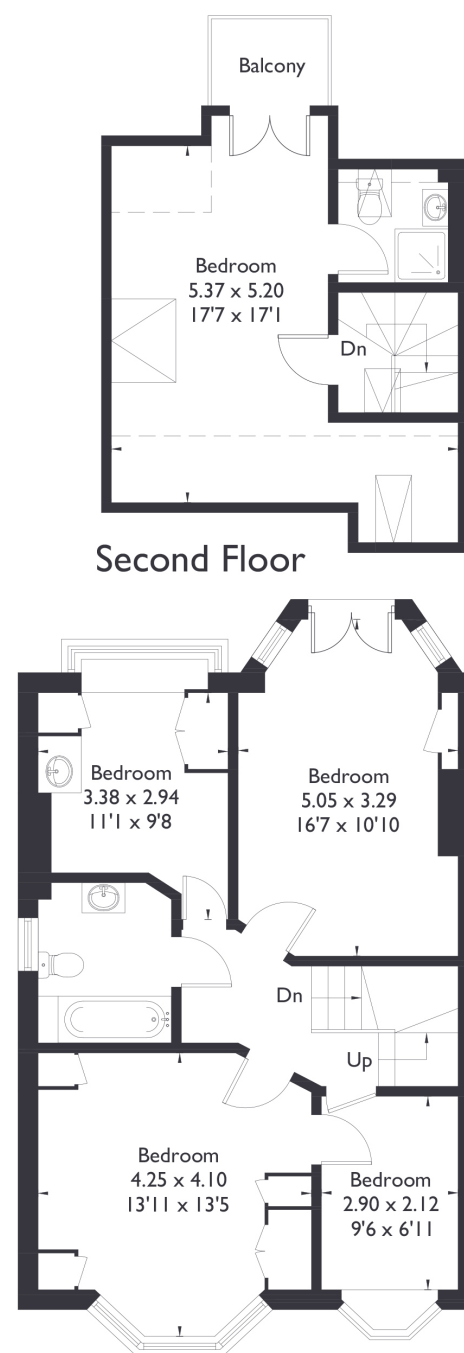
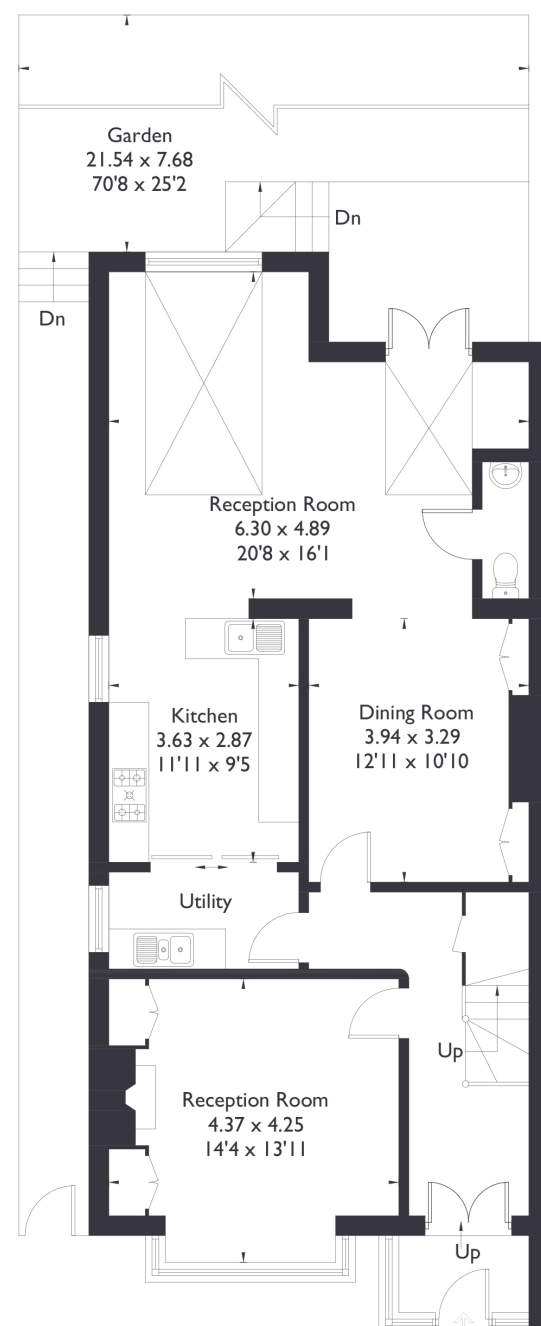


90 Elers Road London, W13 9QE

Approximate Floor Area = 179.1 sq m / 1928 sq ft



[] = Reduced head height below 1.5m



5 BEDROOM HOUSE

Elers Road, W13

£1,950,000

Welcome to this stunning five bedroom semi-detached home located on the highly sought after Elers Road

This exquisite property spans three spacious floors and offers an exceptional blend of style and functionality. The home features a separate reception room, a dining area, a utility space, and a well-appointed kitchen. At the rear, you'll find a generously sized second reception room that opens out to a large, beautifully maintained garden with breath taking views of Lammas Park.

FEATURES

- Five Bedrooms
- Two Bathrooms/ Downstairs W/C
- Views of Lammas Park
- Driveway Parking
- Northfields Amenities
- Northfields Station
- EPC Rating E



5 BEDROOM HOUSE

Elers Road, W13

Natural light floods the interiors through charming bay windows, and the high ceilings add to the property's unique charm.

Ideally situated just off Northfield Avenue, this home is a mere 5 minute walk to Northfields tube Station, offering excellent transport links. It is also within the catchment area for the highly regarded Fielding Primary School and is conveniently close to the vibrant amenities of Ealing Broadway. This remarkable property is truly one of a kind, combining elegance, practicality, and an unbeatable location. EPC Rating E.

