



1009 Leek Road,
Hanley



01782 970222

hello@oneagencygroup.co.uk



Offers in the Region of £90,000

Well presented mid terrace house, situated in a convenient location for access into Hanley City Centre. The property is considered an ideal first time buy and viewing is recommended.





GROUND FLOOR

ENTRANCE PORCH

Door to front, parquet floor.

LIVING ROOM

4.35m max x 3.40m max (14' 3" x 11' 2")
Radiator, double glazed window to front, feature fireplace, parquet floor.

DINING ROOM

3.73m x 3.40m max (12' 3" x 11' 2") Parquet floor, radiator, double glazed window to rear.

KITCHEN

2.69m x 1.97m (8' 10" x 6' 6") Fitted with a range of wall, base and drawer storage units, radiator, double glazed window to side, fitted oven and hob with extractor fan above, stainless steel sink and drainer unit with mixer tap, tiled floor, part tiled walls.

UTILITY AREA

0.85m x 1.97m (2' 9" x 6' 6") Plumbing for automatic washing machine, wall mounted boiler, tiled floor.

SHOWER ROOM

1.62m x 1.86m (5' 4" x 6' 1") Double glazed frosted window to side, heated towel rail, hand wash basin, shower cubicle with electric shower, WC, tiled walls.

FIRST FLOOR

BEDROOM ONE

3.01m into wardrobes x 3.40m max (9' 11" x 11' 2") Double glazed window to rear, radiator, fitted wardrobes.

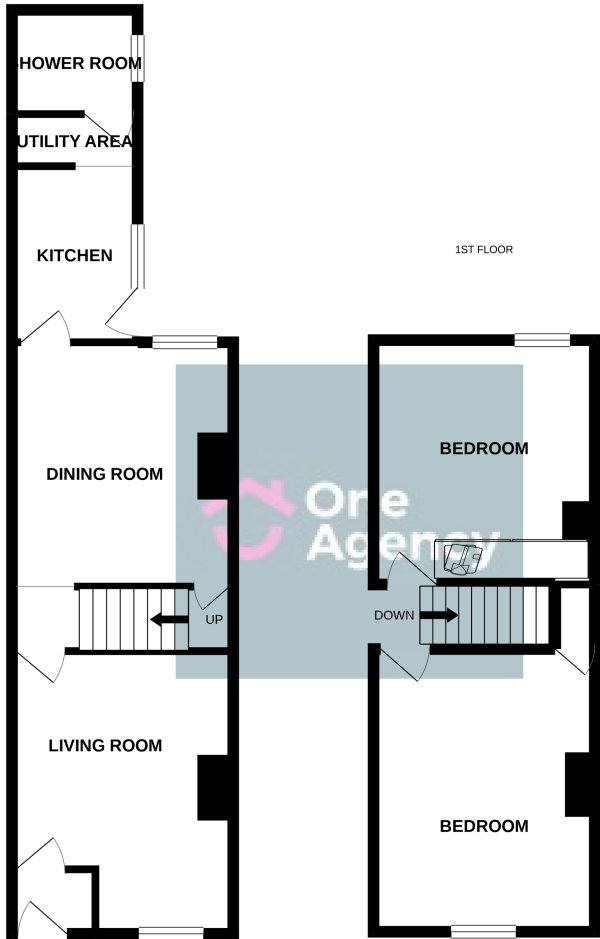
BEDROOM TWO

3.40m x 3.40m max (11' 2" x 11' 2") Double glazed window to front, radiator, fitted storage.

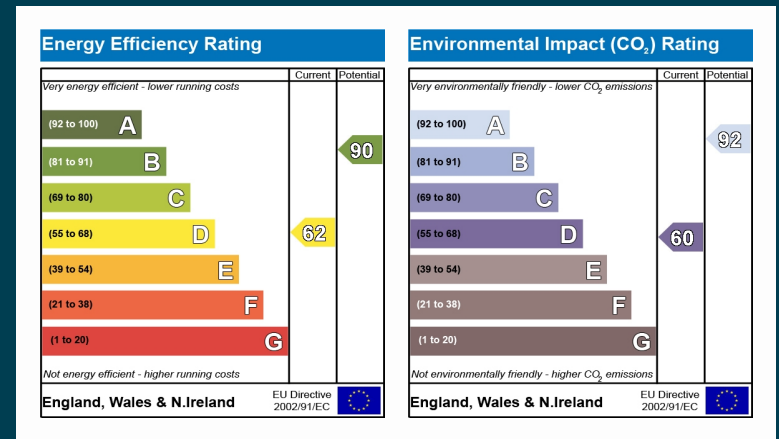
OUTSIDE

Rear yard with sitting area with artificial turf.





Whilst every attempt has been made to ensure the accuracy of the floorplan contained here, measurements of doors, windows, rooms and any other items are approximate and no responsibility is taken for any error, omission or mis-statement. This plan is for illustrative purposes only and should be used as such by any prospective purchaser. The services, systems and appliances shown have not been tested and no guarantee as to their operability or efficiency can be given.
Made with Metropix ©2020



OneAgency, 9 & 10 Ridge House Drive, Festival Park, Stoke-on-Trent, ST1 5SJ

01782 970222

hello@oneagencygroup.co.uk

Every attempt has been made to ensure accuracy, however, all measurements are approximate and for illustrative purposes only. **Not to scale.**

In accordance with The Consumer Protection from Unfair Trading Regulations 2008 the following particulars have been prepared in good faith and they are not intended to constitute part of an offer or contract. We have not carried out a structural survey and the services, appliances and specific fittings have not been tested. All photographs, measurements, floor plans and distances referred to are given as a guide only and should not be relied upon for the purchase of carpets or any other fixtures and fittings. Lease details, service charges and ground rent (where applicable) are given as a guide only and should be checked and confirmed by your Solicitor prior to exchange of contracts.