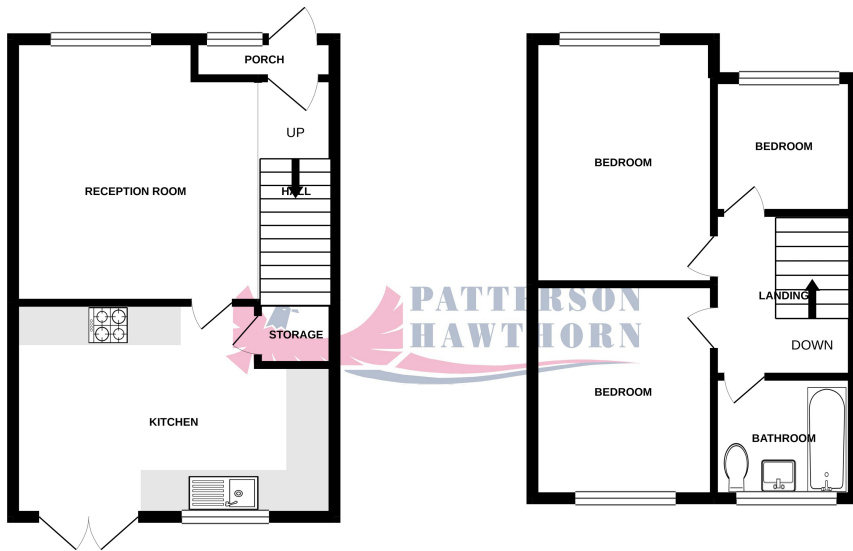


GROUND FLOOR
379 sq.ft. (35.2 sq.m.) approx.

1ST FLOOR
351 sq.ft. (32.6 sq.m.) approx.



TOTAL FLOOR AREA: 730 sq.ft. (67.8 sq.m.) approx.

Whilst every attempt has been made to ensure the accuracy of the floorplan contained here, measurements of doors, windows, rooms and any other items are approximate and no responsibility is taken for any error, omission or mis-statement. This plan is for illustrative purposes only and should be used as such by any prospective purchaser. The services, systems and appliances shown have not been tested and no guarantee as to their operation or efficiency can be given.
Made with MetreXp v2020



01708 500 000

Rainham@pattersonhawthorn.co.uk



New Road, Dagenham

£325,000

- THREE BEDROOMS
- MID TERRACE HOUSE
- IMMACULATE THROUGHOUT
- FIRST FLOOR BATHROOM
- CLOSE TO A13 & M25
- CLOSE TO AMENITIES & SCHOOLS
- IDEAL FIRST TIME BUY



Appointments to view and offers to purchase must be made through Patterson Hawthorn. These particulars are produced for guidance only and do not form any part of an offer or Contract. These particulars, whilst believed to be accurate are to be used for guidance only and do not constitute any part of an offer or contract. Intending purchasers should not rely on them as statements of representation of fact, but must satisfy themselves by inspection or otherwise as to their accuracy. No person in the employment of Patterson Hawthorn has the authority to make or give any representation or warranty in respect of the property. Patterson Hawthorn have not tested any services or appliances in the property, prospective purchasers should satisfy themselves with regard to the working order of these.

See our full selection of properties online at www.pattersonhawthorn.com



GROUND FLOOR

Front Entrance

Via uPVC door into storm porch, double glazed windows to front, tiled flooring, second door is uPVC opening into:

Lounge

4.93m x 3.58m (16' 2" x 11' 9") > 2.87m (9' 5") Double glazed windows to front, radiator, hardwood flooring, stairs to first floor.

Kitchen / Diner

4.55m x 3.23m (14' 11" x 10' 7") Double glazed windows to rear, range of matching wall and base units, laminate work surfaces, one and half bowl inset sink and drainer with brushed chrome mixer tap, under-stairs storage cupboard housing gas and electricity meters, integrated fridge, integrated dishwasher, space and plumbing for washing machine, integrated oven, four ringed gas hob, extractor hood, radiator, tiled splash backs, tiled flooring, uPVC framed door to rear opening to rear garden.



FIRST FLOOR

Landing

Loft hatch with integrated ladder leading to partially boarded loft to ceiling, fitted carpet.

Bedroom One

3.8m x 3.03m (12' 6" x 9' 11") Double glazed windows to front, radiator, fitted wardrobes, fitted carpet.

Bedroom Two

3.26m x 3.04m (10' 8" x 10' 0") Double glazed windows to rear, radiator, fitted carpet.

Bedroom Three

1.83m x 1.8m (6' 0" x 5' 11") Double glazed windows to front, radiator, fitted carpet.

Bathroom

1.8m x 1.77m (5' 11" x 5' 10") Inset spotlights to ceiling, opaque double glazed windows to rear, P-shaped panelled bath with shower, low level flush WC, hand wash basin, chrome hand towel radiator, tiled walls, tiled flooring.

EXTERIOR

Rear Garden

Approximately 21ft x 16ft - Timber shed, mostly paved with gravelled slate area.

Front Garden

Fully paved.