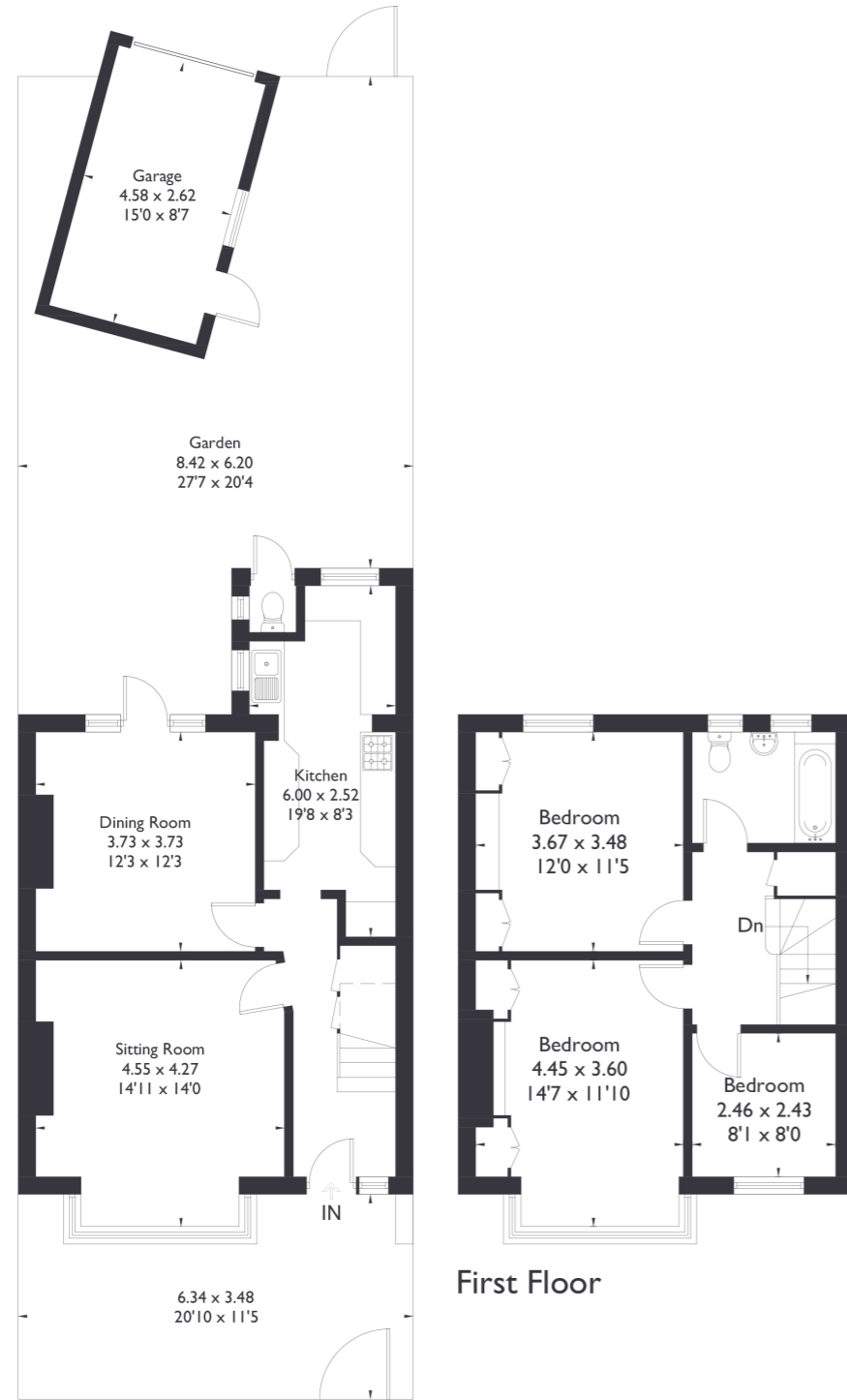


Camborne Avenue , W13

Approximate Floor Area = 103.6 sq m / 1115 sq ft
Outbuildings = 12.7 sq m / 137 sq ft
Total = 116.3 sq m / 1252 sq ft



Ground Floor

First Floor



3 BEDROOM HOUSE

Camborne Avenue, W13
£950,000

Welcome to this three bedroom home, featuring one bathroom and a downstairs outdoor W/C, situated in the heart of Northfields. This property boasts generously sized rooms filled with natural light, offering plenty of space for family living. While it would benefit from some modernisation, its timeless period features, including an original stained-glass front door, lend it character and warmth, making it the perfect canvas to create your dream home.

FEATURES

- Chain Free
- Period Features
- Three Bedrooms
- One Bathroom/Outside W/C
- Separate Plan Kitchen/Dining
- Northfields Station
- Potential To Extend (STPP)
- EPC Rating E



3 BEDROOM HOUSE

Camborne Avenue, W13

The south facing garden provides a private retreat with minimal overlooking, ideal for relaxation or entertaining.

Located just moments from the vibrant amenities of Northfields and Northfields Station, this home also falls within the sought-after catchment area for Fielding Primary School. EPC Rating E.

