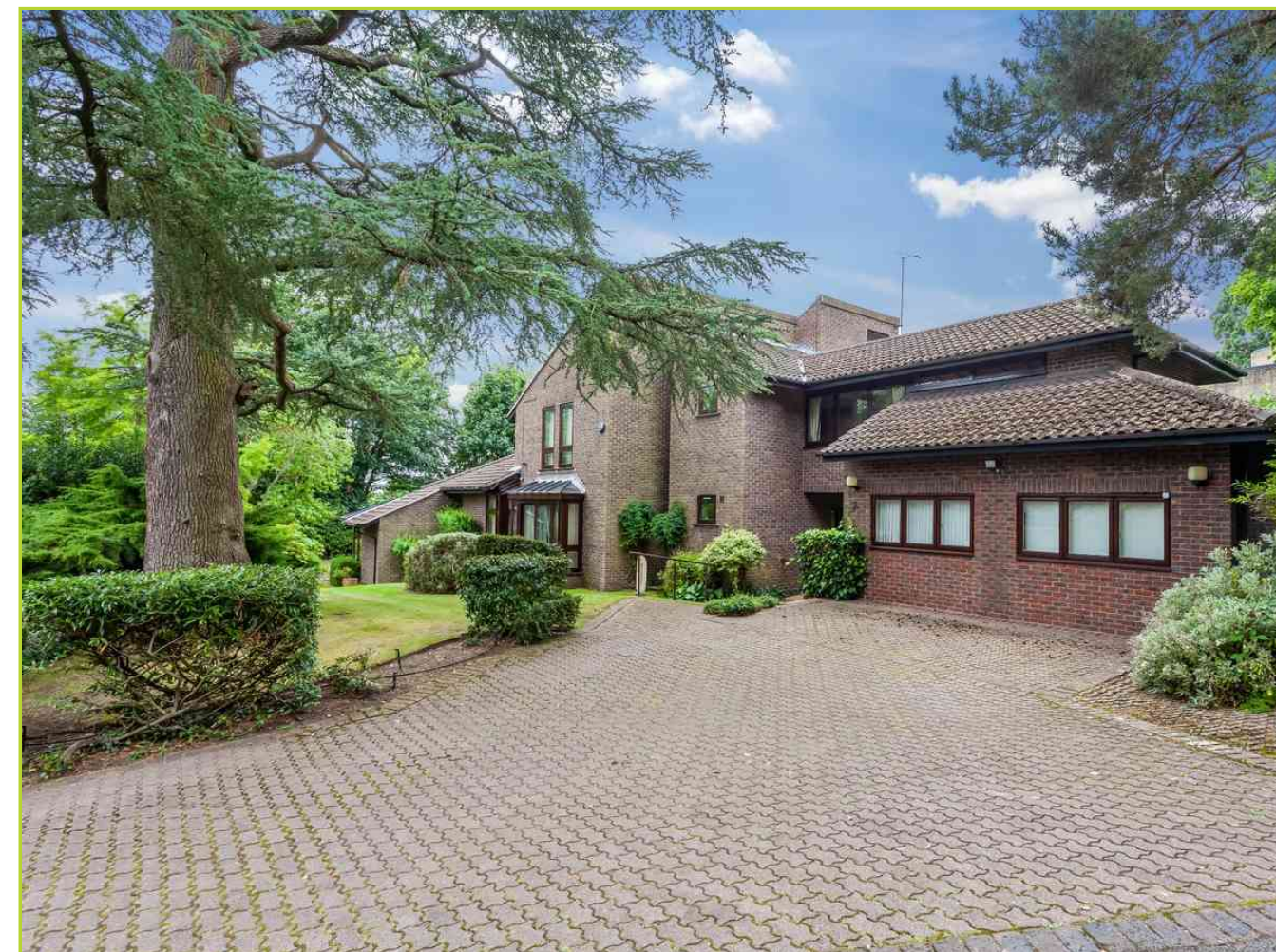
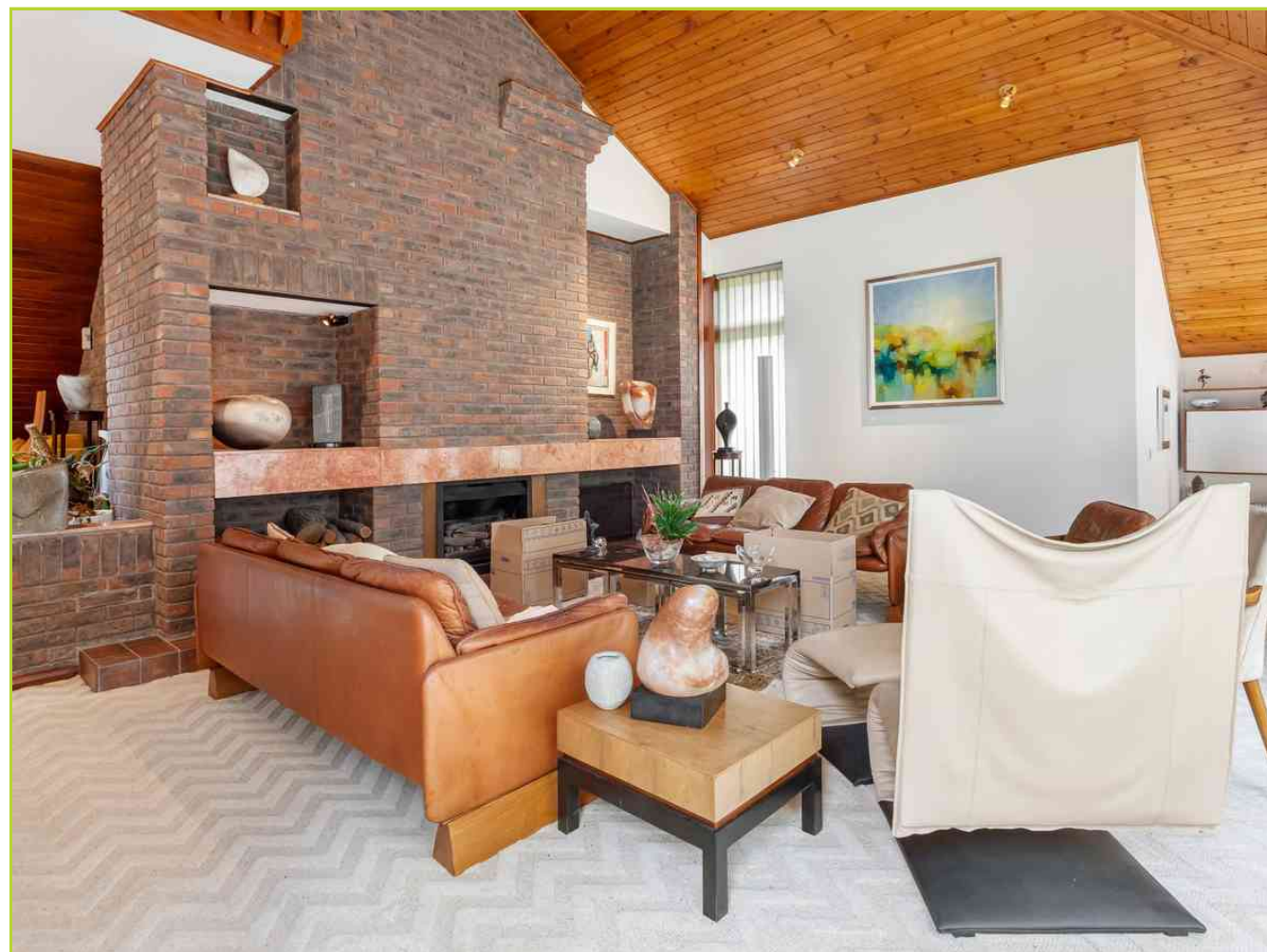
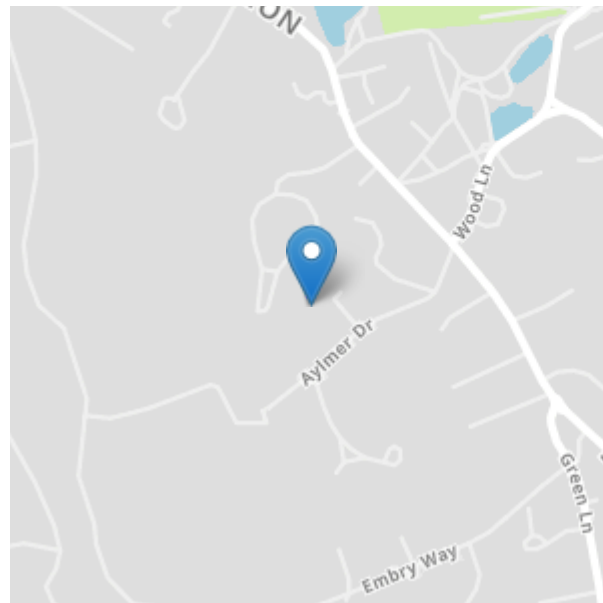


Aylmer Close consists of just 3 individually designed houses within a conservation area. Situated on the west side of Stanmore Hill and forms part of the exclusive Aylmer Drive Estate (complete with its own private security firm at the entrance). It is equidistant to all the amenities of Stanmore Town Centre and Bushey High Street and easily accessible to Stanmore Underground Station, Stanmore Country Park and the principal A roads in and out of Central London. Some of the finest state and private schools in the south east of the country are also close at hand.



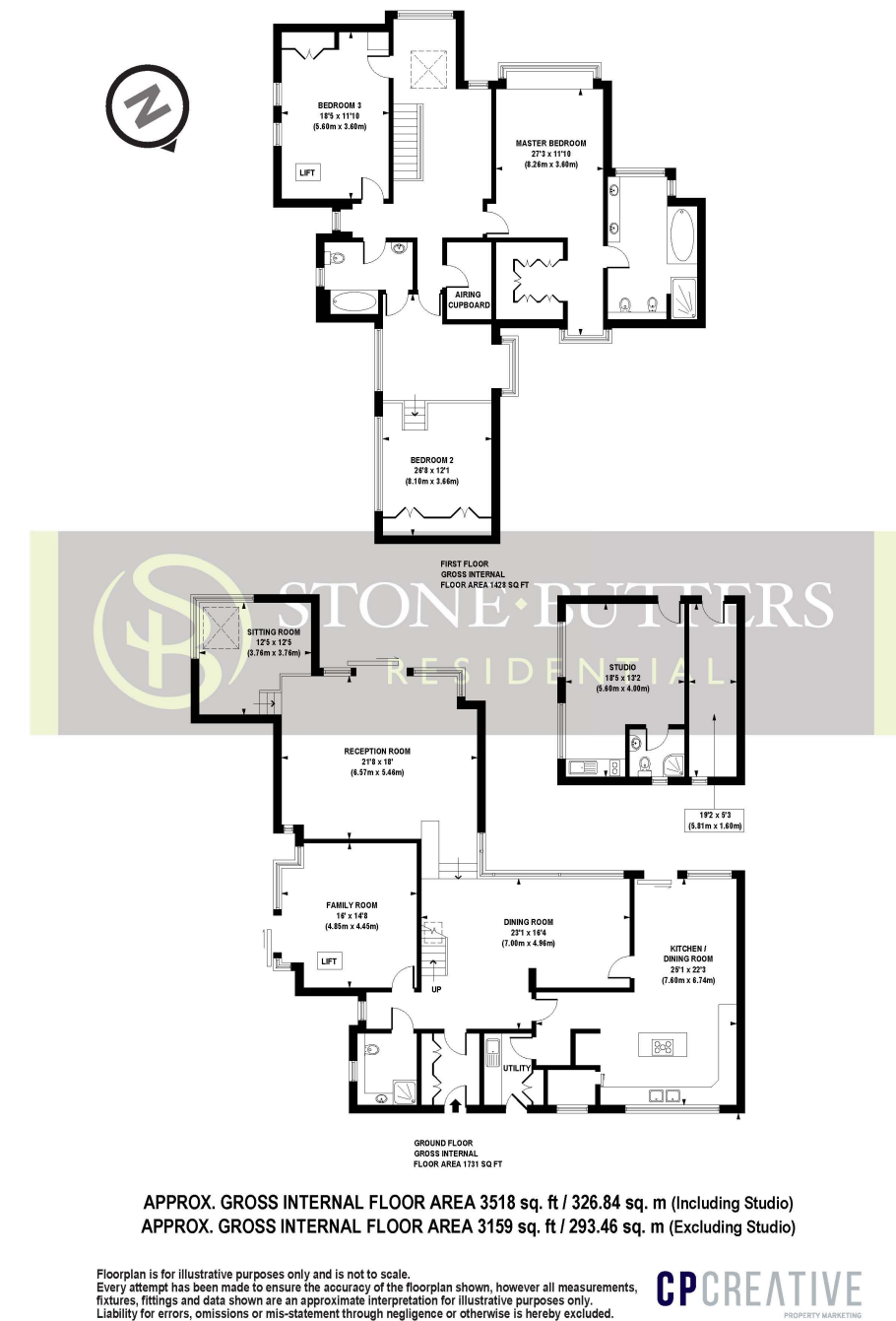
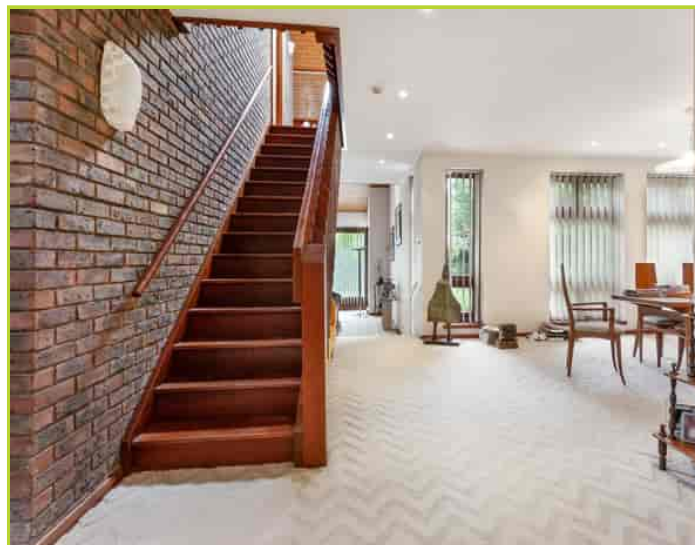
2 Aylmer Close, Stanmore, Middlesex. HA7 3EQ. £2,250,000 Freehold

A Modernist Detached House designed by the renowned South African architect Ted Levy in the 1970s, located in a select private cul de sac on the much favoured Aylmer Drive Estate.

This red-brick house has in excess of 3,000 square feet of interior space spanning two levels. The first floor has 4 double bedrooms and 3 bathrooms, to the ground floor is an open plan dining room, a separate family room, a large kitchen/breakfast room and an impressive main reception with a vaulted ceiling - a signature style of Levy's.

Levy was a leading figure who came to define contemporary architecture in north London during the 1960s and '70s. His high-profile clients included actor Peter Sellers and actress Honor Blackman.

- 4 Reception Rooms
- Guests Cloakroom
- Annex (Formerly Garage)
- Forecourt Parking
- Private Estate
- 3 Bathrooms
- Large Kitchen/Breakfast Room
- Utility Room
- South Facing Garden
- Select Cul De Sac
- 4 Double Bedrooms



(Floor plans are not to scale and measurements are given for guidance only)