



2 School Close

Keevil

BA14 6SB

Located in an exclusive cul-de-sac in the picturesque village of Keevil, this spacious 4 bedroom detached home offers comfortable, well proportioned living space and enjoys stunning rear views of the village church and fields beyond.

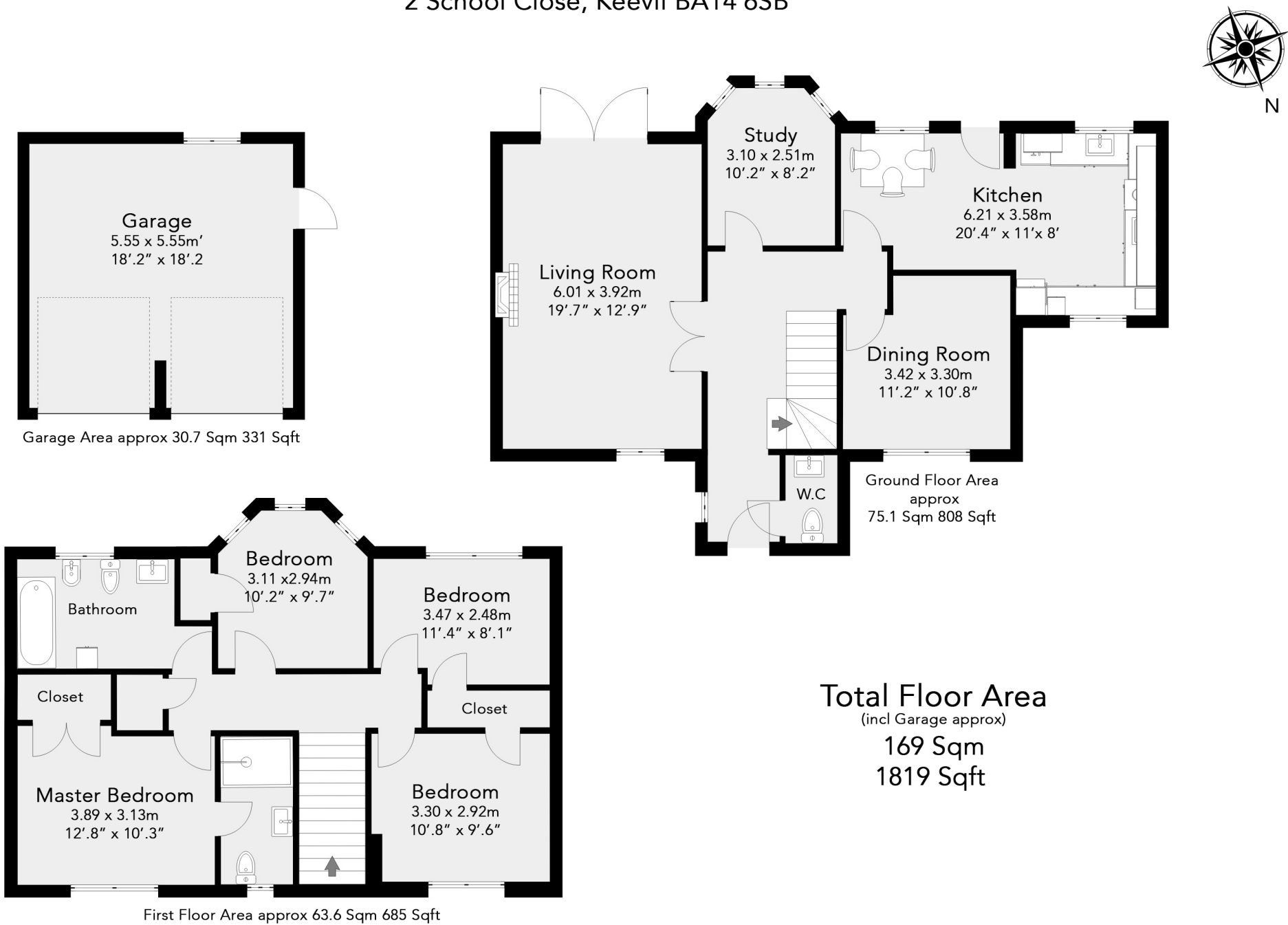
Property Features

- 4 Bedroom detached home
- 3 reception rooms
- Detached double garage
- Far reaching views
- Prime village location
- Vendors suited

Tenure: Freehold

£700,000

2 School Close, Keevil BA14 6SB



All measurements of walls, doors, windows, fittings and appliances, their size and locations are approximate and cannot be regarded as being an accurate representation neither by the vendor nor their agent

Accommodation

Ground Floor

Entrance Hall

With part glazed front door, matwell, side aspect window, radiator.

Cloakroom

With tile effect flooring, side aspect window, WC, wash hand basin, radiator.

Living Room

With dual aspect windows, working fireplace, 2 radiators, glazed double doors to hallway, French doors to patio.

Study/Snug

With glazed door to hallway, rear aspect windows, radiator.

Dining Room

With front aspect window, radiator.

Kitchen/Breakfast room

With tile effect Karndean flooring, range of bespoke floor and wall mounted units having worksurfaces incorporating composite 1 ½ bowl sink and drainer integrated appliances including fridge, freezer, dishwasher, electric hob and eye-level oven and microwave, space for additional white goods, oil fired boiler providing domestic hot water and central heating, 2 rear aspect windows, front aspect window, part glazed external door to patio.

First Floor

Landing

With radiator, access to loft space, airing cupboard.

Bedroom 1

With front aspect window, built-in storage, radiator, door to:-

En Suite Shower

With tile effect flooring, double width walk-in shower, WC, wash hand basin, heated towel rail, front aspect Velux window.

Bedroom 2

With front aspect window, radiator, built-in wardrobe.

Bedroom 3

With rear aspect window, radiator, built-in wardrobe.

Bedroom 4

With rear aspect window, radiator, built-in storage.

Family Bathroom

With tile effect flooring, bath with shower head attachment, sink, toilet, bidet, wall mounted heated towel rail, rear aspect window.

Externally

The property enjoys a generous driveway providing parking for multiple vehicles and access to a double garage with light, power, and side access. The south facing rear garden is a particular highlight, predominantly laid to lawn with a spacious patio, mature planted borders and stunning views.

Double garage: with light, power, two up and over doors, rear aspect window, side access part glazed door.



Situation

The picturesque village of Keevil is surround by stunning countryside and conveniently placed, within 10 miles of many of Wiltshire's market towns including; Trowbridge, Bradford on Avon, Melksham, Devizes, Westbury and Warminster, providing a variety of amenities, shopping facilities and railway stations. The village benefits from an excellent primary school (rated "outstanding" by Ofsted) and St Leonard church, both of which serve as hubs to the village community. There are also weekly Post Office facilities found at the village hall.

The nearby village of Steeple Ashton (approximately 2 miles) has a shop and cafe supplying local produce and staffed by volunteers from the community and The Longs Arms public house which has an excellent reputation for both food and hospitality.

The World Heritage City of Bath lies approximately 15 miles distant and provides a full range of amenities and cultural interests including the Theatre Royal, Thermae Spa and numerous museums.

Description

Nestled in the very heart of the village, this exceptional 4 bedroom detached residence is presented to an immaculate standard throughout and enjoys wonderful views across open fields and the picturesque village church.

Upon entering the property, you are greeted by a spacious and welcoming entrance hall, complete with a convenient cloakroom. The ground floor offers a wealth of flexible living space, including a bright and airy dual aspect living room with elegant French doors opening onto the rear garden. A further reception room currently used as a study offers a versatile space, ideal as a snug, playroom or home office. There is also a formal dining room, perfect for entertaining and a superbly appointed kitchen/breakfast room featuring an extensive range of floor and wall mounted units, complemented by a host of integrated appliances.

Upstairs, the accommodation continues to impress with 4 generous double bedrooms, all benefiting from built-in wardrobes. The principal bedroom further boasts a stylish en suite shower room, while the remaining bedrooms are served by a well appointed family bathroom.

Externally, the property enjoys a generous driveway providing parking for multiple vehicles and access to a double garage with light, power, and side access. The south facing rear garden is a particular highlight, predominantly laid to lawn with a spacious patio, mature planted borders and stunning views.

This is a rare opportunity to acquire a wonderfully maintained family home in an enviable village location. Early viewing is highly recommended.

General Information

Services: We are advised that all mains services are connected with the exception of gas

Heating: Oil fired central heating

Local Authority: Wiltshire Council

Council Tax Band: Band G – £3,851.28

Important Notice: Cobb Farr, their clients and any joint agents give notice that: They assume no responsibility for any statement that may be made in these particulars. These particulars do not form part of any offer or contract and must not be relied upon as statements or representations of fact. Any areas, measurements or distances are approximate. The text, photographs and plans are for guidance only and are not necessarily comprehensive. It should not be assumed that the property has all necessary planning; building regulation or other consents and Cobb Farr have not tested any services, equipment or facilities. Purchasers must satisfy themselves by inspection or otherwise.

