

REDUCED



5 Rosewood Close, Worksop, Nottinghamshire S81 7RD

£262,500 - Freehold



78, Bridge Street, Worksop, S80 1JA 01909 509001 [info@bartropanddilks.co.uk](mailto:info@bartropanddilks.co.uk)

## PROPERTY SUMMARY

Set within this delightful cu de sac is this well presented four bedroom detached family home that has gas central heating and uPVC double glazed windows. Viewing is recommended for the property that has generous accommodation and is well placed for local amenities and schools. The accommodation comprises of; entrance area that leads directly to the dining room, W.C, lounge with rear facing French doors to the garden. Kitchen with a good range of fitted units. On the first floor; landing, four bedrooms, bedroom one with free standing wardrobes to one wall, ensuite shower room. Family bathroom. Outside; gardens to the front and rear, the rear being enclosed with patio and decking, driveway and garage.

## POINTS OF INTEREST

- *Viewing Highly Advised*
- *Well Presented*
- *Four Bedroom*
- *Detached Family Home*
- *Gas Central Heating*
- *uPVC Double Glazed*
- *Driveway*
- *Garage*
- *Cul De Sac Location*
- *Sought After Area*
- *Short Term 6 months let*



## ROOM DESCRIPTIONS

### Ground Floor

#### Entrance Area

With entrance door, direct access to the dining room.

#### Dining Room 3.96m x 2.44m (13' 0" x 8' 0")

With stairs to the first floor, central heating radiator, storage cupboard.

#### W.C

Comprising of a low flush w.c, wash hand basin, central heating radiator and a side facing window.

#### Lounge 5.2m x 2.74m (17' 1" x 9' 0")

With a front facing window, rear facing French doors, two central heating radiators, fire surround with electric fire.

#### Kitchen 3.65m x 2.14m (12' 0" x 7' 0")

With a range of wall and base units, worksurfaces, sink unit and drainer, integrated four ring gas hob, electric oven with a stainless steel cooker hood, integrated fridge and freezer, plumbing for a dishwasher, power points, splash back tiles, a rear facing double glazed window, plumbing for a washing machine, wall mounted boiler, central heating radiator and a rear facing entrance door.

### First Floor

#### Landing

With loft access, central heating radiator and cylinder airing cupboard.

#### Bedroom One 3.35m x 3.05m (11' 0" x 10' 0")

With free standing mirror wardrobes to one wall, tiled wall, front facing window, central heating radiator. Additional built in storage cupboard back over the stairs.

#### Ensuite

A three piece suite comprising of a shower cubicle, wash hand vanity unit, low flush w/c, central heating radiator and a front facing double glazed obscure window.

#### Bedroom Two 3.40m x 2.74m (11' 2" x 9' 0")

With a front facing window, central heating radiator, shelf storage.

#### Bedroom Three 2.89m x 2.74m (9' 6" x 9' 0")

With a rear facing window, central heating radiator.

#### Bedroom Four 1.83m x 1.83m (6' 0" x 6' 0")

With a rear facing window, central heating radiator.

#### Bathroom

A three piece suite comprising of a panelled bath, pedestal sink, low flush w/c, partly tiled, central heating radiator and a rear facing window.

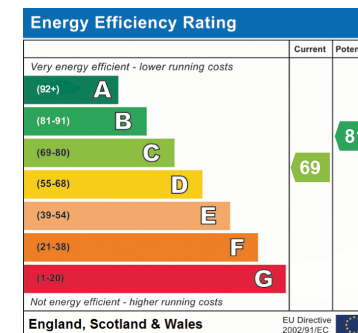
### Outside

#### Gardens

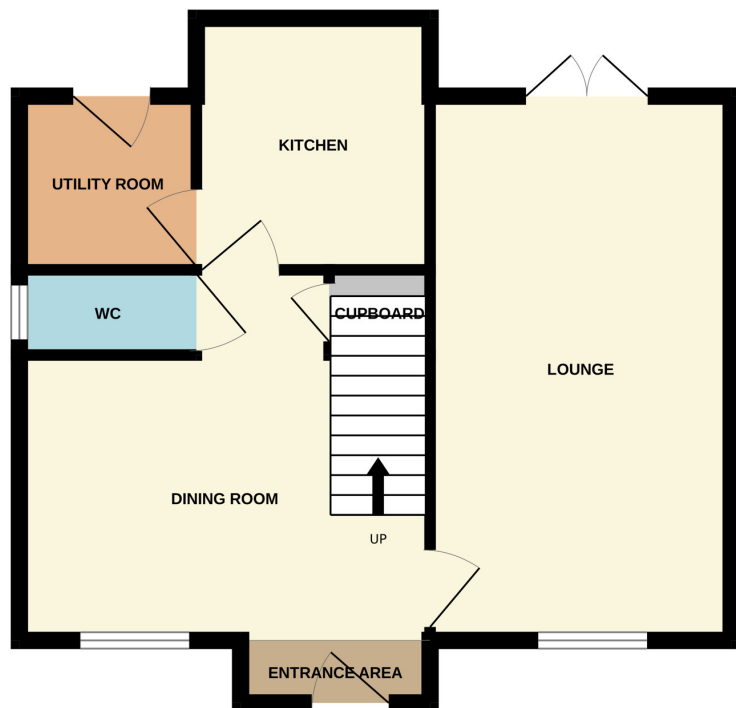
With front and rear lawned gardens. The rear being enclosed with patio and decking areas.

#### Driveway

#### Garage



GROUND FLOOR



1ST FLOOR

