

12 Kenilworth Road, Petts Wood, Orpington, Kent, BR5 1DY

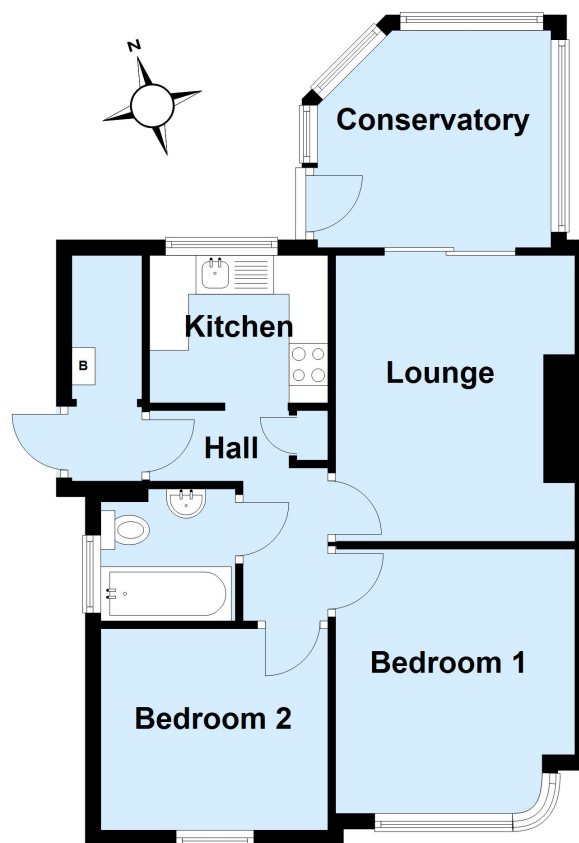
Property Images





Ground Floor

Approx. 53.6 sq. metres (577.4 sq. feet)



Total area: approx. 53.6 sq. metres (577.4 sq. feet)

This plan is for general layout guidance and may not be to scale.
Plan produced using PlanUp.