

Anthony Nolan Road, King's Lynn

£115,000

A modern one bedroom ground floor apartment located in a popular location close to the Queen Elizabeth Hospital. The accommodation comprises hall, living room, kitchen, double bedroom and bathroom. The property further benefits from gas central heating, double glazing and allocated parking space. Local amenities can be found in Gaywood with more extensive facilities found in King's Lynn Town Centre including a main line rail link into Cambridge and London King's Cross.

Hall

Entrance door, storage cupboard, radiator and fitted carpet.

Living Room

11' 5" x 14' 1" (3.48m x 4.29m) Double glazed windows, two radiators and fitted carpet.

Kitchen

10' 2" x 5' 8" (3.10m x 1.73m) Double glazed window, fitted kitchen with matching wall and base units, space for washing machine and fridge freezer, stainless steel sink, integrated oven and hob with extractor above and vinyl flooring.

Bedroom

10' 9" x 10' 7" (3.28m x 3.23m) Double glazed window, radiator and fitted carpet.

Bathroom

7' 6" x 5' 10" (2.29m x 1.78m) Panel bath with mixer shower, low flush w/c, wash hand basin, radiator and vinyl flooring.

Allocated Parking Space

EPC Rating - Awaiting

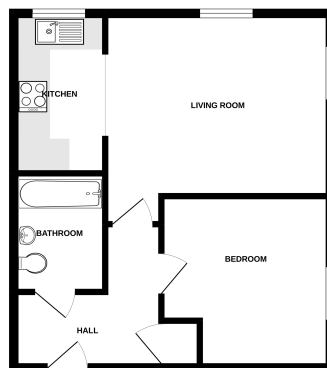
Council Tax - A

LEASE INFORMATION

Please enquire for further information.



GROUND FLOOR



Millsopps Limited has been made to ensure the accuracy of the floor plan. Measurements of rooms are given as an approximate guide only and should not be relied upon for any purpose. The floor plan, floor and wall dimensions, area and volume are given as an approximate guide only and should not be relied upon for any purpose. Millsopps Limited is not responsible for any errors or omissions. Millsopps Limited 2022.