





11a Doris Road, Ashford, Surrey TW15 1LS
£475,000 - Freehold



PROPERTY DESCRIPTION

Offered with NO ONWARD CHAIN this detached chalet bungalow is situated in this popular cul-de-sac location which is close to schools, local shops and public transport. The accommodation comprises of a living room, conservatory, kitchen, downstairs bathroom, separate downstairs shower, two bedrooms downstairs and two bedrooms upstairs, there is a shared drive which leads to a large rear garden and garage with parking to the front. Please contact the sellers agents Gregory Brown to make an appointment to view.

POINTS OF INTEREST

- Detached chalet bungalow
- Four bedrooms
- No onward chain
- Good size garden
- Living room with doors to conservatory
- Off road parking
- Viewing recommended
- Close to schools and Local Shops

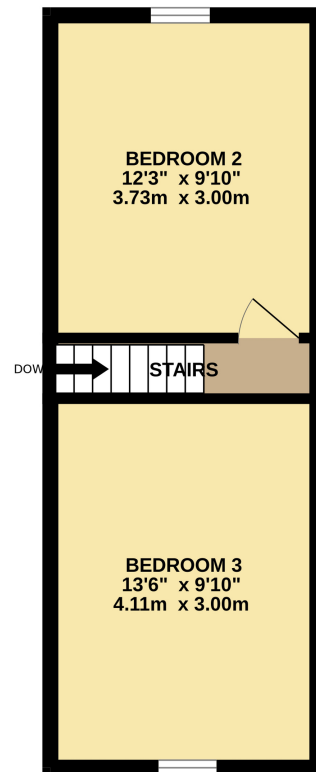
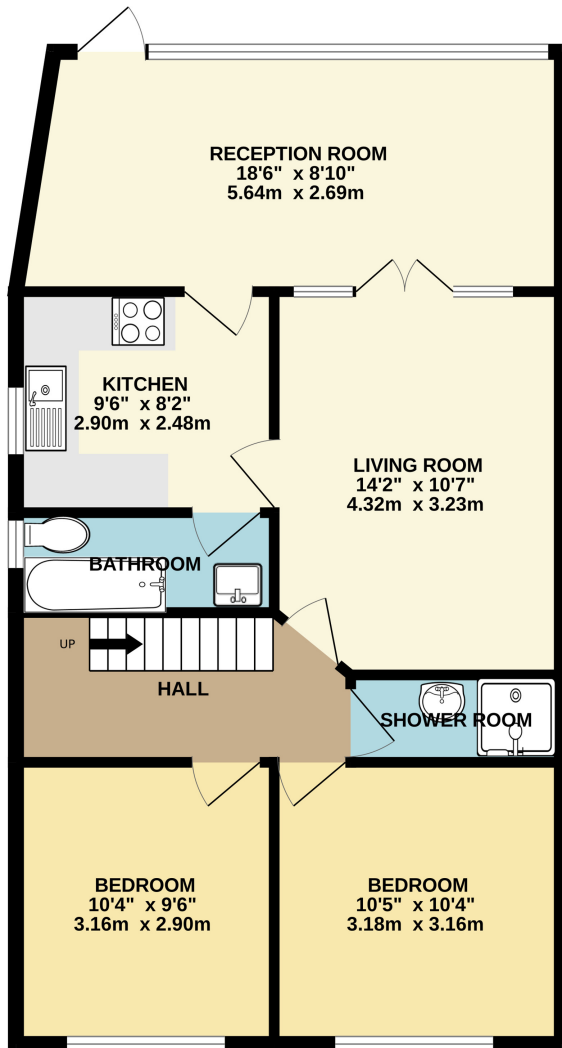


GROUND FLOOR

728 sq.ft. (67.6 sq.m.) approx.

1ST FLOOR

273 sq.ft. (25.3 sq.m.) approx.



TOTAL FLOOR AREA : 1001 sq.ft. (93.0 sq.m.) approx.

Whilst every attempt has been made to ensure the accuracy of the floorplan contained here, measurements of doors, windows, rooms and any other items are approximate and no responsibility is taken for any error, omission or mis-statement. This plan is for illustrative purposes only and should be used as such by any prospective purchaser. The services, systems and appliances shown have not been tested and no guarantee as to their operability or efficiency can be given.

Made with Metropix ©2025

