

01992641500

[www.christopherstokes.co.uk](http://www.christopherstokes.co.uk)

10 Newnham Parade, College Road, Cheshunt,  
Hertfordshire, EN8 9NU

christopher  
stokes



## Dark Lane, West Cheshunt, Hertfordshire EN7 5EB

**£440,000 Freehold**

- Three bedroom family home
- Sought after West Cheshunt location
- Off street parking for two cars
- Walking distance to schools, shops and other local amenities
- Close to A10 and M25
- Patio area and laid to lawn garden
- Ground floor bathroom
- Potential to extend to the side STPP

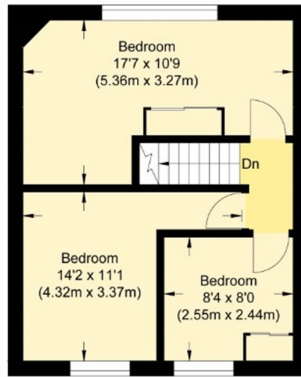
**\*SOUGHT AFTER WEST CHESHUNT LOCATION ~ IDEAL THREE BEDROOM FAMILY HOME ~ POTENTIAL TO EXTEND TO SIDE STPP\***

Three bedroom, end of terrace family home ideally situated in the sought after location of West Cheshunt. The property benefits from reception room, kitchen/dining room, downstairs family bathroom and patioed garden to the rear, with potential to extend to the side STPP. Upstairs further delivers three bedrooms and the property offers off street parking for two vehicles and is within walking distance to The Goffs Academy, Bonneygrove Primary School, bus routes, shops & amenities with excellent A10/M25 road links.

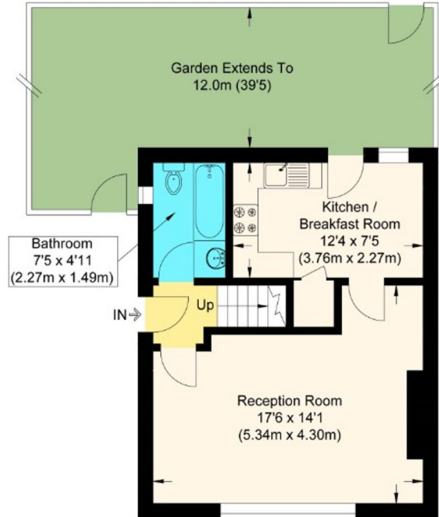




These particulars, whilst believed to be accurate are set out as a general outline only for guidance and do not constitute any part of an offer or contract. Intending purchasers should not rely on them as statements or representation of fact, but must satisfy themselves by inspection or otherwise as to their accuracy. We have not carried out a detailed survey nor tested the services, appliances and specific fittings. Room sizes should not be relied upon for carpets and furnishings. The measurements given are approximate. No person in this firm's employment has the authority to make or give any representation or warranty in respect of the property.



First Floor



Ground Floor



## Dark Lane

Approximate Gross Internal Floor Area : 71.80 sq m / 772.84 sq ft  
Illustration for identification purposes only, measurements are approximate, not to scale.

