





- Incredible Semi-detached house
- Luxuriously Appointed
- Open Plan Living Accommodation
- Kitchen & Lounge Areas
- Three Bedrooms
- Luxury Shower Room
- Extremely Long Rear Garden
- Ample Parking

Description

This is an incredible, fully modernised family home, which is located close to the village centre and features an extremely large rear garden. The property has under-gone a complete make-over programme, which has seen the creation of a superb open plan living room with lounge, dining and kitchen areas, all featuring under-floor heating with solid oak floors. There are large bi-folding doors that open onto a very generous patio area for al-fresco dining. Other worthy features include new carpets on the stairs and first floor, a newly installed luxury shower room and fitted wardrobes in the main bedroom. Externally there is ample off road parking in addition to the large rear garden. Immediately available, restrictions apply.



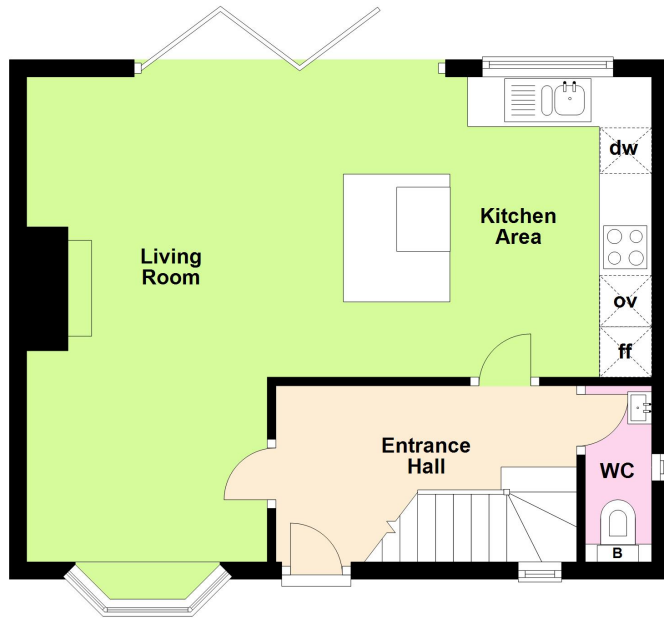
Location
Tenure

EPC Rating:

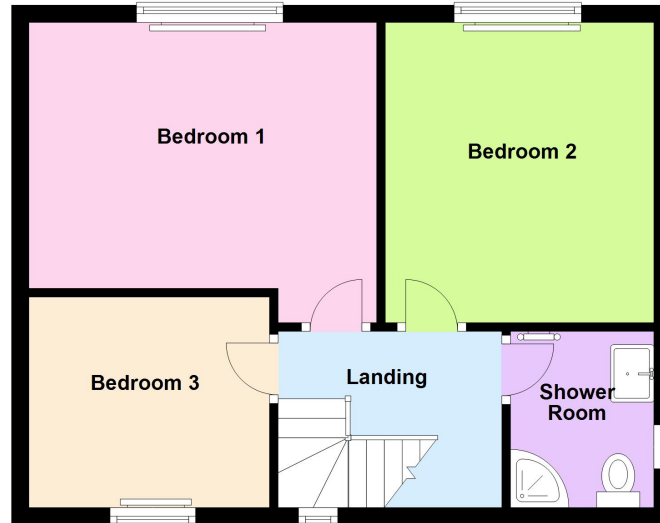
Important Notes
Type Here



Ground Floor
Approx. 439.2 sq. feet



First Floor
Approx. 437.2 sq. feet



Total area: approx. 876.4 sq. feet

