



Flat 9, 15 Lloyd Court, The Crescent, Bedford, MK40 2RU

£140,000 Leasehold

- Communal Parking
- Town Centre Location
- Long Lease Remaining
- No Upward Chain
- Two Bedrooms
- Walking Distance Town, River, Hospital And Station
- Lounge/Diner
- Scope For Modernisation
- Ideal For First Time Buyers or Investors
- 19FT Lounge/Diner
- EPC Rating



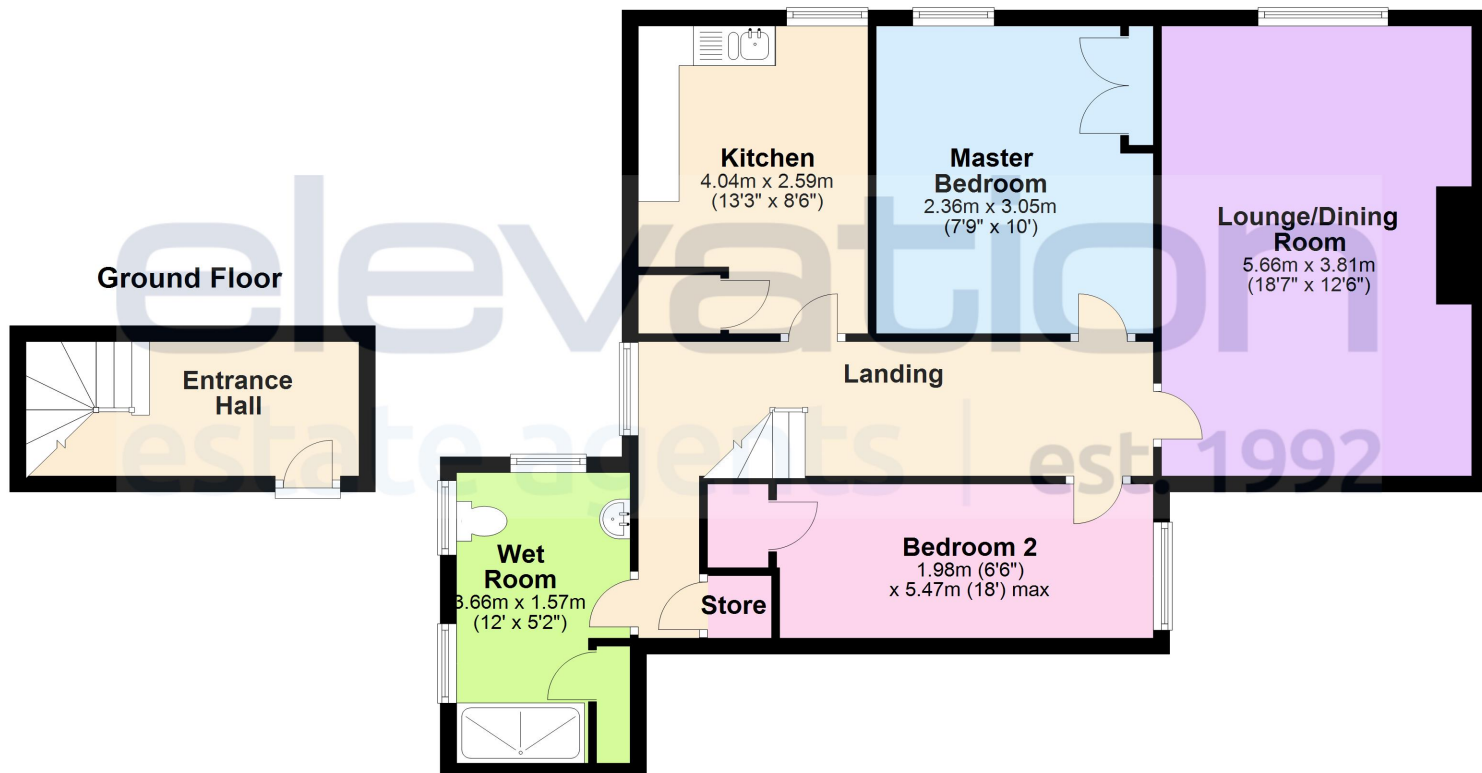


Disclaimer

Whilst we have endeavoured to prepare our sales particulars accurately none of the services, appliances or equipment have been tested. A buyer should satisfy themselves on such matters prior to purchase. Any measurements or distances mentioned in these particulars are for guide reference only. If such particulars are fundamental to a purchase, buyers should rely on their own enquiries. All enquiries should be directed to Elevation Estate Agents in the first instance.

First Floor

Ground Floor



This floor plan along with the dimensions are for guidance only and should not be used for carpet sizes, appliances or items of furniture.
Plan produced using PlanUp.