



1113a Finchley Road, London.
NW11 0QB



£700,000

Leasehold

A rare opportunity to purchase a spacious split level 5 bedroom HMO apartment located on Finchley Road, NW11.

This property boasts 5 double bedrooms, 2 of which are self-contained studio apartments with kitchenettes and separate shower rooms, an additional 3 double bedrooms with ample space and storage as well as an open plan living/kitchen area.





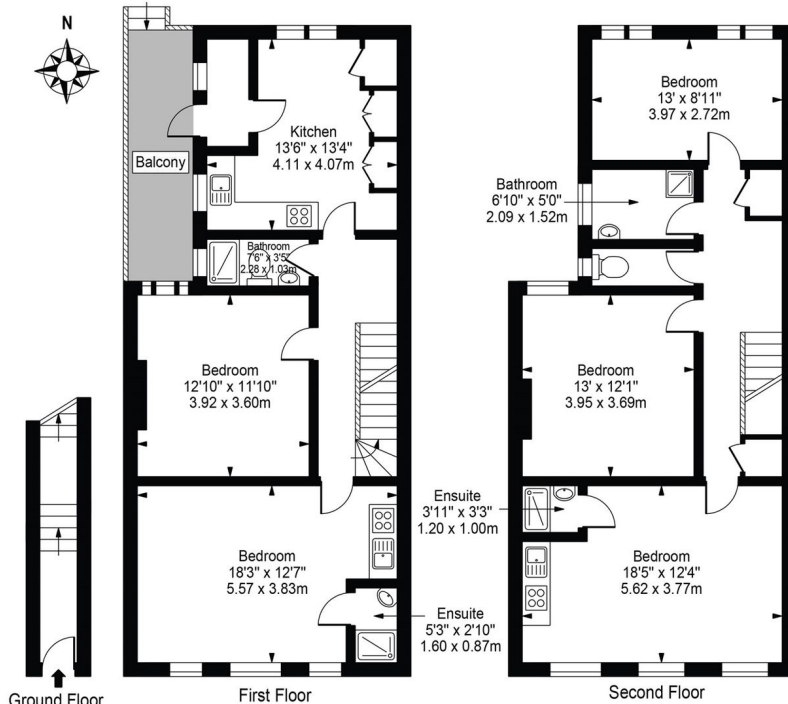
- LEASEHOLD
- GREAT LOCATION
- 2 STUDIO APARTMENTS

- 5 BEDROOM DUPLEX
- TRANSPORT LINKS

- HMO LICENSE
- LOCAL AMENITIES

Finchley Road, NW11 0QB

Approx. Gross Internal Area 1485 Sq Ft - 137.94 Sq M



For Illustration Purposes Only - Not To Scale

This floor plan should be used as a general outline for guidance only and does not constitute in whole or in part an offer or contract. Any intending purchaser or lessee should satisfy themselves by inspection, searches, enquiries and full survey as to the correctness of each statement. Any areas, measurements or distances quoted are approximate and should not be used to value a property or be the basis of any sale or let.



Energy Efficiency Rating		Current	Potential
Very energy efficient - lower running costs			
(92-100)	A		
(81-91)	B		
(69-80)	C		77
(55-68)	D	65	
(39-54)	E		
(21-38)	F		
(1-20)	G		
Not energy efficient - higher running costs			
England, Scotland & Wales		EU Directive 2002/91/EC	

Hendon

02082 034 567

info@abcestates.co.uk