



Canfield Place, London, NW6 3BT

Cow & Co
LONDON



Guide price £450,000 - £550,000. This impressive Victorian mews first floor apartment is located just around the corner from the popular Finchley Road and within walking distance to London Underground (Jubilee and Metropolitan lines) and the Overground providing easy links to all London airports.

The vaulted ceilings add character and charm. The accommodation briefly comprises entrance hallway with a workstation, bright lounge with built in storage, dining kitchen with fitted units, 'butler' style sink, a double bedroom with built-in wardrobes and stylish bathroom with free-standing bath, shower and feature wash basin. Benefits from gas central heating, PVC double-glazed windows, neutral décor throughout and complimenting flooring.

Located in this established South Hampstead neighbourhood with local shops and amenities along with perfect access to some of the city's trendiest bars, restaurants, coffee shops and green spaces. Viewing is strongly recommended!



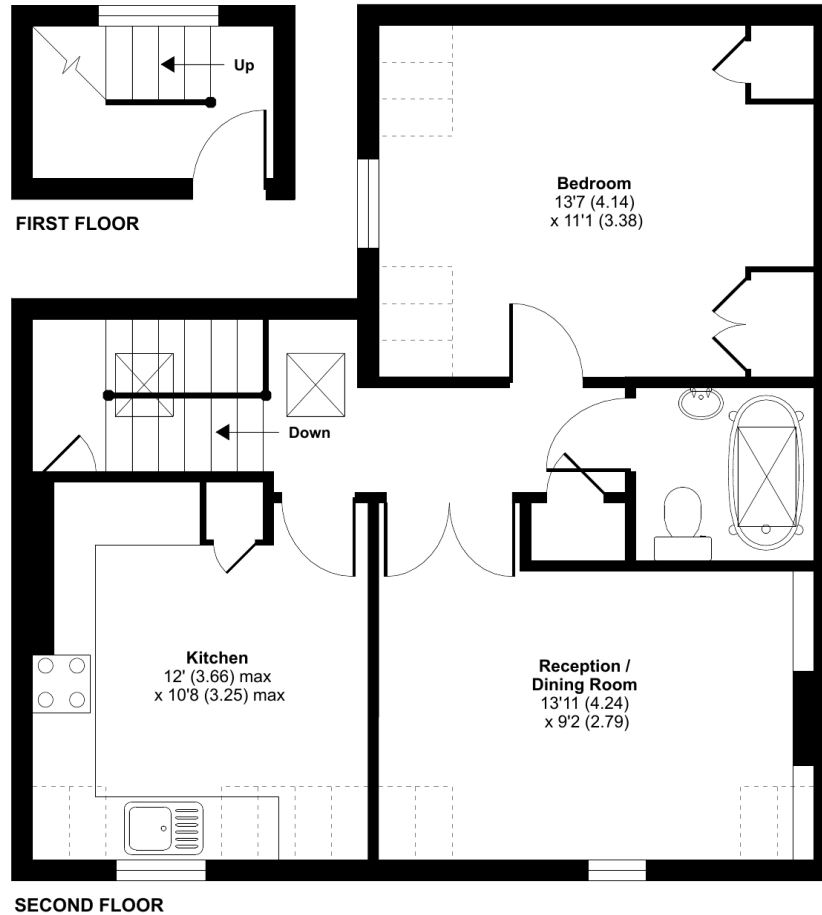
- Large one double bedroom apartment
- Spacious kitchen diner with sleek integrated appliances.
- Ample built in storage
- Spacious double bedroom with built in wardrobes
- Well appointed and remodeled bathroom with shower
- Excellent fixtures and fittings throughout
- Close to local amenities and transport links.
- Security entry phone system
- Victorian Mews

Canfield Place, London, NW6

Approximate Area = 560 sq ft / 52 sq m
Limited Use Area(s) = 59 sq ft / 5.4 sq m
Total = 619 sq ft / 57.5 sq m
For identification only - Not to scale



Denotes restricted head height



Floor plan produced in accordance with RICS Property Measurement Standards incorporating International Property Measurement Standards (IPMS2 Residential). © nchecon 2024. Produced for Cow & Co Properties Ltd. REF: 1129166

Tel: 0208 065 0010
Email: thehub@cowandco-london.com
Web: cowandco-london.com

Agents note: All measurements are approximate and whilst every attempt has been made to ensure accuracy they are for general guidance only and must not be relied on. The fixture and fittings referred to have not been tested and therefore no guarantee can be given that they are in working order. Internal photographs are reproduced for general information and it must not be inferred that any item shown is included with the property.

Cow & Co

LONDON