



**Guide Price £525,000 Share of Freehold**  
3 bedroom maisonette

Mount Pleasant Road  
Hither Green

## Read all about it...

A spacious three-bedroom first-floor maisonette, blending charming period features with stylish modern interiors, and benefiting from a private south-facing garden.

Accessed via its own private entrance, the property opens to a bright first-floor landing, beautifully lit by a well-placed skylight. At the front, a light-filled reception room offers a warm and inviting space. Toward the rear, the spacious kitchen/diner is thoughtfully designed with sleek modern units, integrated appliances, and ample room for cooking, dining, and entertaining. The property features three bedrooms, including two generous doubles with built-in storage, and a contemporary family bathroom finished to a high standard.

Outside, the private south-facing garden provides a peaceful retreat — lovingly maintained and perfect for alfresco dining, gardening, or simply relaxing in the sun.

Ideally located just 0.5 miles from Hither Green Station, the property offers frequent and direct services to Central London, making it a fantastic option for commuters. The surrounding area is vibrant and well-served, with a variety of local amenities including a GP, pharmacy, 24-hour Anytime Fitness gym, supermarkets, cafés, and independent shops all within easy reach.

Hither Green is also popular with families, offering access to highly regarded nurseries and schools, as well as nearby green spaces — with Mountsfield Park just a short stroll away.

**Tenure:** Share of Freehold (remaining lease term - 900+ years) | **Council Tax:** Lewisham band C

**THREE BEDROOM MAISONETTE**  
**BEAUTIFULLY PRESENTED THROUGHOUT**  
**0.5MI TO HITHER GREEN STATION**

**MODERN KITCHEN & BATHROOM**  
**PRIVATE SOUTH FACING GARDEN**  
**CLOSE TO MOUNTSFIELD PARK**



**Like what you see?**

Call **020 8852 0026** or email us at [hithergreen@stanfordstates.london](mailto:hithergreen@stanfordstates.london)  
to arrange a viewing or request further information





## FIRST FLOOR

### Landing

Skylight, inset ceiling spotlights, bespoke cabinetry, cork flooring.

### Reception Room

4.45m x 3.50m (14' 7" x 11' 6")

Double-glazed bay windows, pendant ceiling light, column radiators, cork flooring.

### Kitchen/Diner

4.82m x 3.84m (15' 10" x 12' 7")

Double-glazed windows, inset ceiling spotlights, pendant ceiling lights, fitted kitchen units, sink with mixer tap and drainer, integrated dishwasher, washing machine, fridge/freezer, oven, grill and hob, radiator, wood flooring.

### Bedroom

3.50m x 3.23m (11' 6" x 10' 7")

Double-glazed window, pendant ceiling light, built-in wardrobe, fireplace, radiator, fitted carpet.

### Bedroom

3.03m x 2.97m (9' 11" x 9' 9")

Double-glazed window, pendant ceiling light, storage cupboard, radiator, fitted carpet.

### Bedroom

2.42m x 1.98m (7' 11" x 6' 6")

Double-glazed window, pendant ceiling light, radiator, cork flooring.

### Bathroom

2.78m x 1.22m (9' 1" x 4' 0")

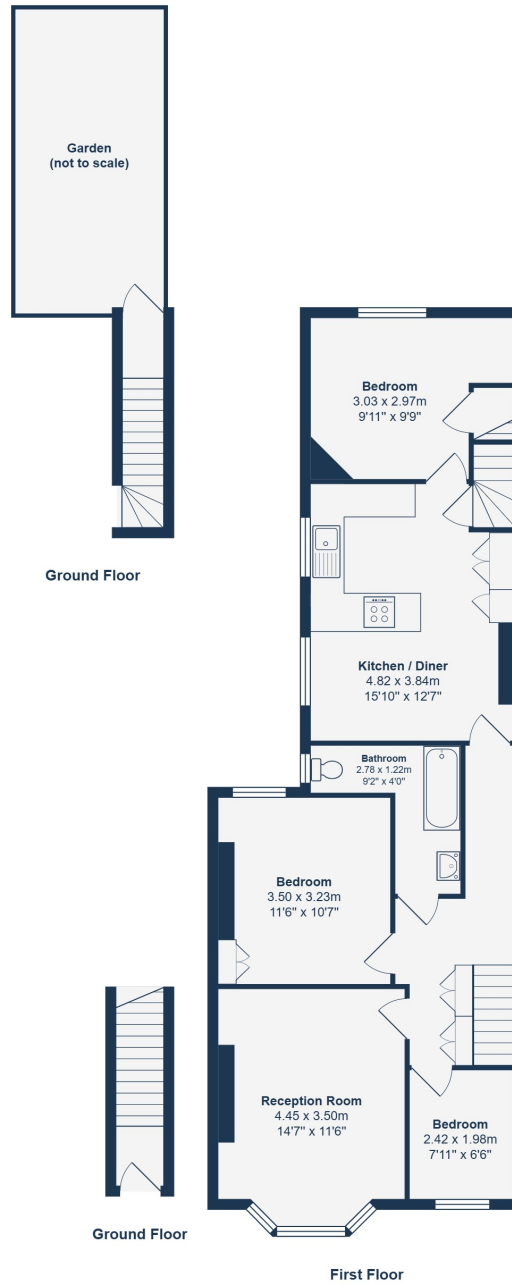
Double-glazed window, inset ceiling spotlights, bathtub with shower and screen, washbasin, WC, radiator, tile flooring.

## OUTSIDE

### Private Garden

Front and rear patios, mature plants, storage shed and rear access.





Total Area: 84.0 m<sup>2</sup> ... 904 ft<sup>2</sup> (excluding garden)

Drawn for Stanfords Sales & Lettings

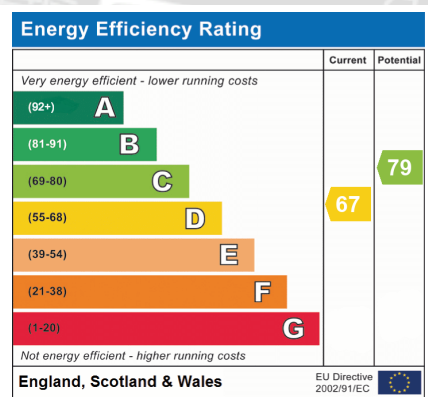
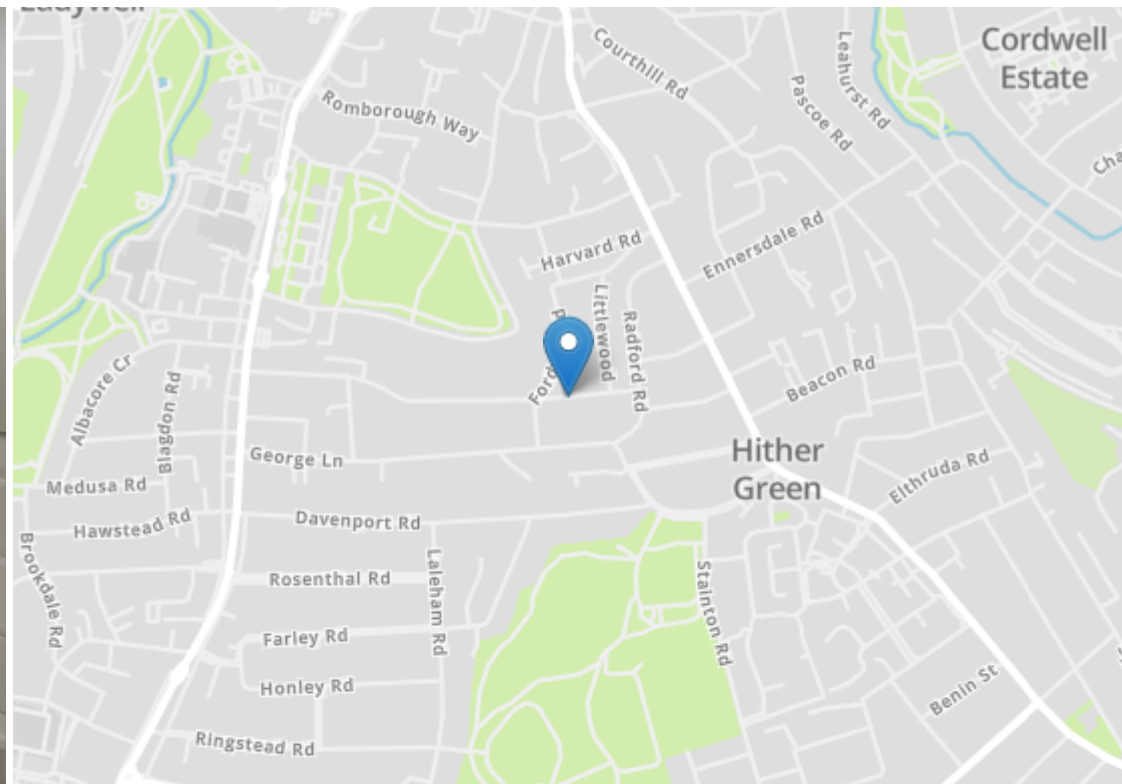
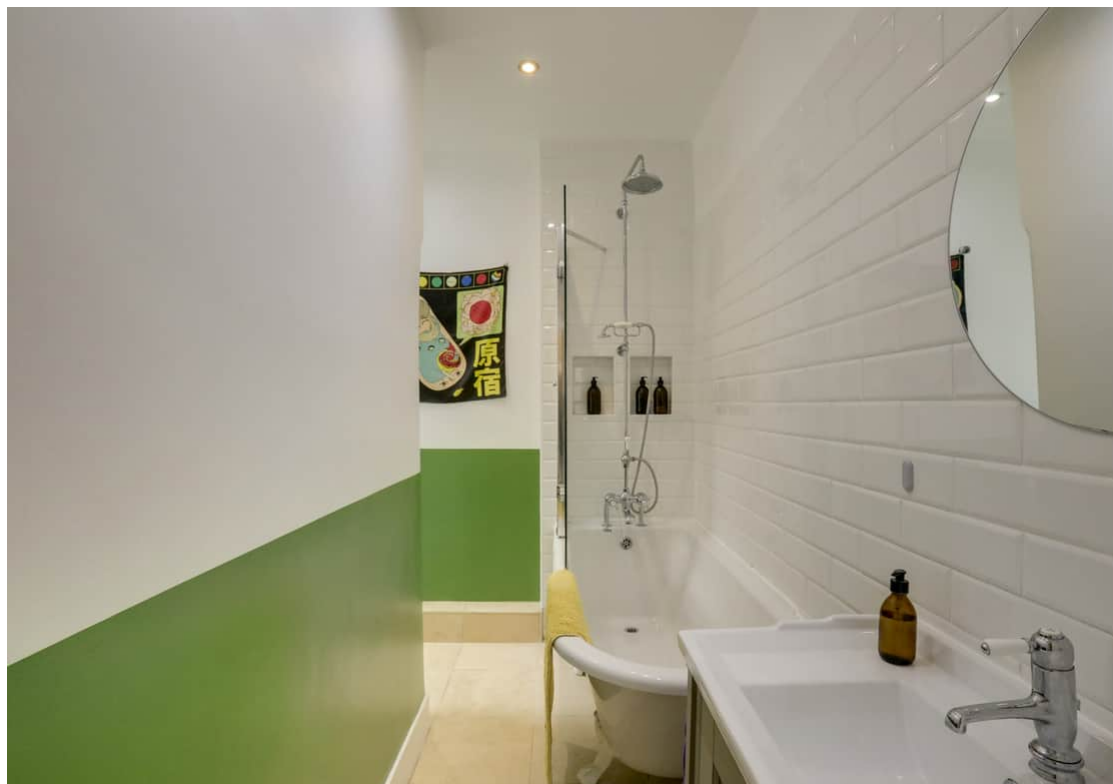
This floorplan is for illustrative purposes only. Whilst every effort has been made to ensure the accuracy of the plan, the dimensions and total area are approximated only and should not be relied upon.











Robert Stanford Estates property particulars are produced in accordance with the Consumer Rights Act (2015) and should not be construed as a contract or offer. The contents of these property particulars are to provide a general illustration only and are inconsequential to any decisions to purchase a property. A potential buyer accepts that all representations made by these particulars are made in good faith on behalf of the seller and require verification by a buyers' legal and professional representatives prior to an exchange of contracts. We offer no guarantees for any structural component, service or appliance and while we make every effort to take accurate measurements and distances, they are illustrative only. Any reliance you place on information within these particulars is therefore strictly at your own risk.