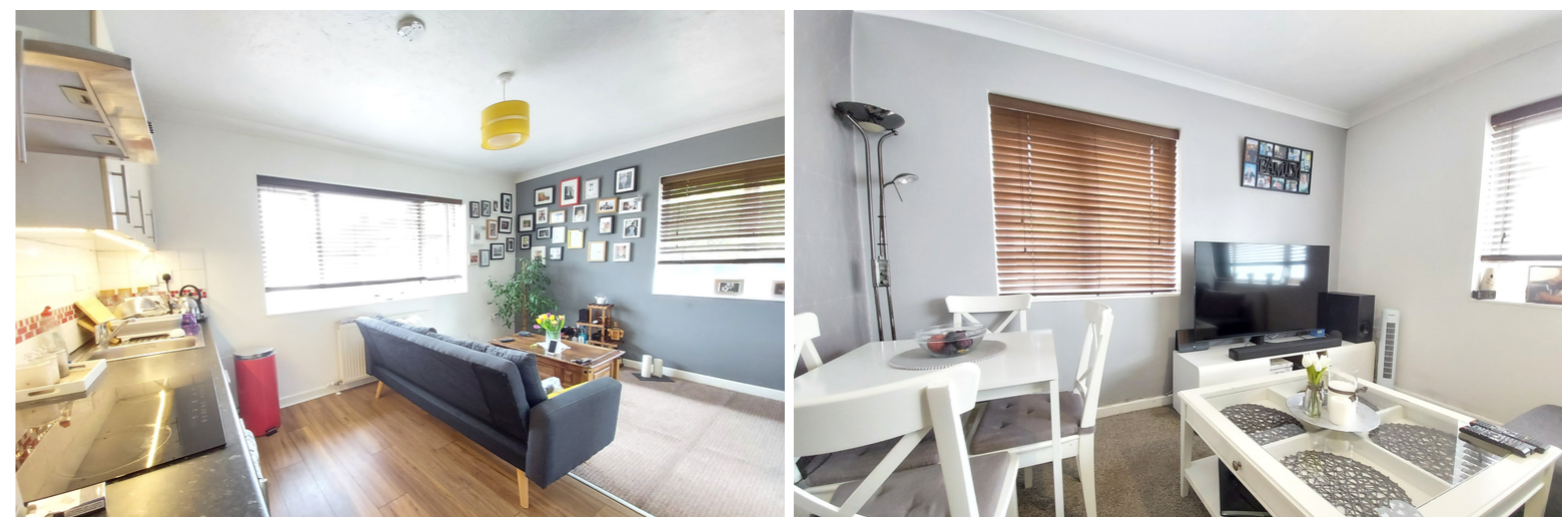




1 Willan Court Brewster Ave, Peterborough PE2 9PR

£525,000



*** OPPORTUNITY TO PURCHASE A WHOLE BLOCK OF FLATS *** " Guide price £525,000 - £550,000. Flat rentals and expenditure available upon request, please call our sales team. A unique opportunity has arisen to purchase a whole block of flats, consisting of four one bedroom flats and two bedsits. Outside there is off road parking to the front. Communal gardens to the rear and two storage sheds currently shared by the tenants. EPC Energy Rating - C/D/ Council Tax Band - D".

FLAT 1 - KITCHEN - LIVING

15' 0" x 11' 5" (4.57m x 3.48m) (approx)

BEDROOM 1

15' 0" x 11' 4" (4.57m x 3.45m) (approx)

ENSUITE 1

FLAT 2 - KITCHEN

7' 11" x 5' 10" (2.41m x 1.78m) (approx)

SHOWER ROOM 1

LIVING - BEDROOM 1

10' 3" x 7' 11" (3.12m x 2.41m) (approx)

FLAT 3 - KITCHEN - LIVING

15' 0" x 11' 5" (4.57m x 3.48m) (approx)

BEDROOM 2

15' 0" x 11' 4" (4.57m x 3.45m) (approx)

ENSUITE 2

FLAT 4 - KITCHEN - LIVING

15' 0" x 11' 5" (4.57m x 3.48m) (approx)

BEDROOM

15' 0" x 11' 4" (4.57m x 3.45m) (approx)

ENSUITE 3

FLAT 5 - KITCHEN

7' 11" x 5' 10" (2.41m x 1.78m) (approx)

SHOWER ROOM 2

LIVING - BEDROOM 2

10' 3" x 7' 11" (3.12m x 2.41m) (approx)

FLAT 6 - KITCHEN - LIVING

15' 0" x 11' 5" (4.57m x 3.48m) (approx)

BEDROOM 3

15' 0" x 11' 4" (4.57m x 3.45m) (approx)

SHOWER ROOM 3

OUTSIDE

There is parking for several vehicles, a garden with fencing and two large storage sheds.

AGENT NOTES

The floorplan is for illustrative purposes only. Fixtures and fittings do not represent the current state of the property. Not to scale and is meant as a guide only.

AGENT NOTES

Current rentals available on request.

