



WATERHOUSE APARTMENTS, 3 SAFFRON CENTRAL SQUARE, CROYDON, SURREY CR0 2FR

£238,000

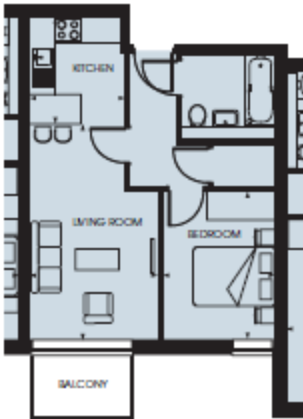
With three years service charges paid by the vendor this one bedroomed third floor apartment offers contemporary interior design and beautiful communal areas, 24h gym access and concierge. Located only minutes from East and West Croydon BR, North End high street and a bountiful choice of transport options to speed you around London this flat clearly offers superior conveniences for the first time buyer.

- 3 years Service Charges paid = £11721
- 24/7 conceirge and gym
- Close to transport

VIEWING BY APPOINTMENT WITH 1ST AVENUE. CALL: 020 8603 7107

**APARTMENTS, 3
SAFFRON CENTRAL
SQUARE, CROYDON,
SURREY CR0 2FR**

£238,000



APARTMENT		
Living Room	3.05m x 5.10m	10'0" x 16'9"
Kitchen	2.26m x 2.40m	7'5" x 7'10"
Master Bedroom	2.60m x 3.44m	8'6" x 11'3"
TOTAL	40.0 SQM	431 SQFT
BALCONY	3.5 SQM	38 SQFT

**VIEWING BY APPOINTMENT
WITH 1ST AVENUE.**
CALL: 020 8603 7107