



GREGORY BROWN
RESIDENTIAL SALES & LETTINGS

OIEO £275,000 Share of Freehold
FOR SALE



8 Lazare Court Gresham Road, Surrey, STAINES-UPON- THAMES, TW18 2BY

SHARE OF FREEHOLD | SPACIOUS AND WELL PRESENTED TWO DOUBLE BEDROOM FIRST FLOOR APARTMENT SITUATED IN THIS SOUGHT AFTER CHARACTERFUL BUILDING IDEALLY LOCATED WITHIN MOMENTS OF STAINES TOWN CENTRE & MAINLINE TRAIN STATION. The property benefits from a spacious lounge/diner, separate modern fitted kitchen, two double bedrooms, modern white bathroom suite, residents parking and a share of freehold. No Onward Chain. Viewings Highly Recommended!

Gregory Brown

127a, High Street, Staines-upon-Thames, TW18 4PD

01784 451458

staines@gregory-brown.co.uk

ROOM DESCRIPTIONS

Communal Entrance

With security-entry system, stairs to first floor.

First Floor

Entrance Hall

With hardwood front door, light and power power points, security-entry phone, doors to:

Lounge/Diner

Twin front aspect double glazed windows, light and power points, radiator.



Kitchen

Side aspect double glazed window, range of fitted units at eye and base level, laminate roll edged worktops, sink drainer unit, wall mounted gas boiler, built-in oven and hob with extractor over, space for washing machine and fridge. Light and power points, partly tiled walls.



Bedroom 1

Rear aspect double glazed window, light and power points, radiator, range of built-in wardrobes.



Bedroom 2

Rear aspect double glazed window, light and power points, radiator.



ROOM DESCRIPTIONS

Bathroom

Side aspect double glazed window, white three piece bathroom suite comprising panel enclosed bath with shower over, low level W.C and pedestal wash hand basin. Partly tiled walls, light point.



Outside

Communal Grounds & Parking

Well maintained grounds, bin storage & residents parking.



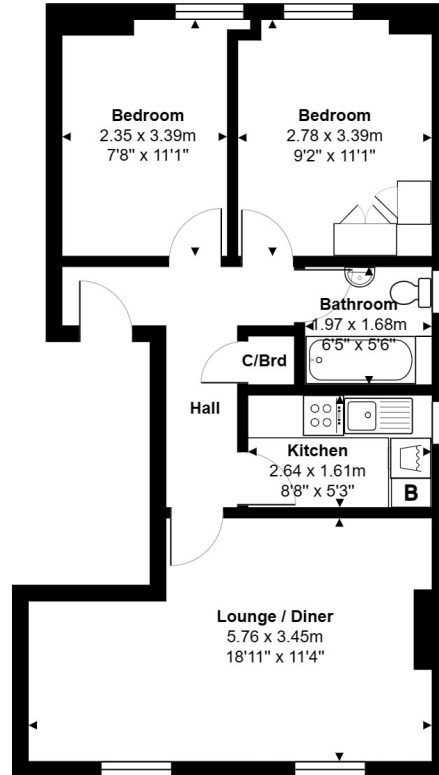
Share Of Freehold

Lease Term

199 Years from 2014

£0 Ground Rent

FLOORPLAN



Ground Floor

Total Area: 51.7 m² ... 556 ft²

All measurements are approximate and for display purposes only.