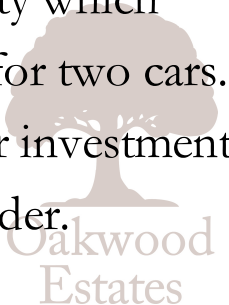


This two bedroom Edwardian house is centrally located in the charming village of Datchet and just a short walk from a range of shops, schools and transport links (Waterloo Line). The property comes onto the market in excellent condition and was built in 1910 having been subject to a re-design since its original build. The ground floor features an 11ft living room with log burner fireplace and a stylish 12ft kitchen/diner with wood finish surfaces. The first floor includes the two bedrooms - the master bedroom benefiting from fitted wardrobes - and the family bathroom. Externally there is a south-east facing garden to the front of the property which incorporates a wood shed and greenhouse and private parking for two cars. This property would make for an excellent first time purchase or investment due to its convenient location and superb decorative order.



Property Information

Floor Plan

- 

TWO BEDROOM EDWARDIAN HOUSE
- 

SHORT WALK TO DATCHET VILLAGE
- 

12FT KITCHEN/DINER
- 

MASTER BED WITH FITTED WARDROBES
- 

SOUTH-EAST FACING GARDEN
- 

COUNCIL TAX - BAND C
- 

BUILT IN 1910
- 

11FT LIVING ROOM
- 

MODERN THREE PIECE BATHROOM
- 

GAS CENTRAL HEATING
- 

PARKING FOR 2 CARS
- 

EPC - D

					
x2	x1	x1	x2	Y	N
Bedrooms	Reception Rooms	Bathrooms	Parking Spaces	Garden	Garage

External

Front of House: Low maintenance laid to lawn garden; south-east facing; greenhouse; shed.

Parking: Designated off street parking for up to two cars.

Council Tax

Band C - £1309

Transport Links

Nearest stations:

- Datchet (0.5 mi)
- Windsor & Eton Riverside (1.1 mi)
- Windsor & Eton Central (1.3 mi)

The M4 (J5) which is about a mile away, provides access to Heathrow, London, the West Country and the M25.

Schools

PRIMARY SCHOOLS:

Eton End School Trust (Datchet) Limited
0.2 miles away Independent school

Datchet St Mary's CofE Primary School
0.5 miles away State school

Long Close School
0.8 miles away Independent school

Castleview Primary School
0.9 miles away State school

St Mary's Church of England Primary School
1 mile away State school

SECONDARY SCHOOLS:
Churchmead Church of England (VA) School
0.3 miles away State school

Ditton Park Academy
0.7 miles away State school

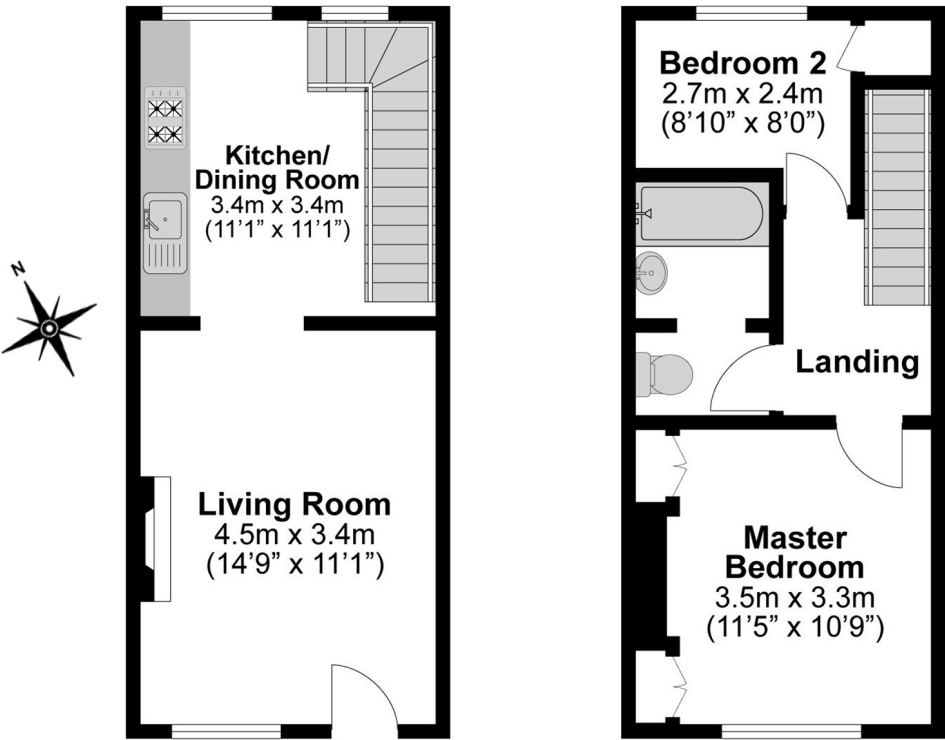
Long Close School
0.8 miles away Independent school

Upton Court Grammar School
1 mile away State school

St George's School
1.1 miles away Independent school



Total Approximate Floor Area
624 Square feet
58 Square metres



Illustrations are for identification purposes only,
measurements are approximate, not to scale.

Prospective purchasers should be aware that these sales particulars are intended as a general guide only and room sizes should not be relied upon for carpets or furnishing. We have not carried out any form of survey nor have we tested any appliance or services, mechanical or electrical. All maps are supplied by Goview.co.uk from Ordnance Survey mapping. Care has been taken in the preparation of these sales particulars, which are thought to be materially correct, although their accuracy is not guaranteed and they do not form part of any contract.

