

Curling Tye Lane, Woodham Walter CM9 6LT



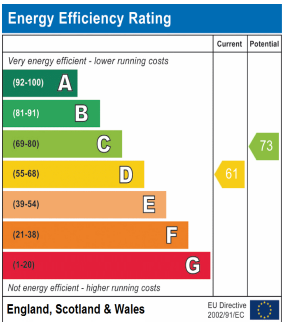
Energy Efficiency Rating D



£1,900 Per Month



Shrubbery Barn, Curling Tye Lane, Woodham Walter, Maldon, Essex CM9 6LT



**\*\* Online enquiries only, please email [lettings@bondresidential.co.uk](mailto:lettings@bondresidential.co.uk) \*\***

Available from 30th June, this stunning barn conversion backs onto farmland in a semi rural position yet is within a 10 minute drive of Maldon and the village of Danbury. Well presented throughout with oil fired central heating and double glazed windows the property has a large open plan living area which incorporates a living room, dining space and fitted kitchen with integrated oven and hob under a vaulted ceiling with exposed oak timbers. There are three bedrooms and a bathroom with contemporary white suite and bath and separate walk in shower. Outside there are 2 parking spaces and an enclosed garden.

The property is unfurnished and available initially on a 12 month term or longer by request.

This would suit a working professional person or couple.

**Council Tax Band: B Deposit: £2190.00 EPC Rating: D**

- Detached Barn Conversion
- Four Piece Bathroom Suite
- Open plan living room, dining and kitchen area
- Enclosed garden area
- Three Bedrooms
- Semi-Rural Location
- Stunning Countryside Views
- Private Drainage
- Oil Fired Central Heating
- Parking



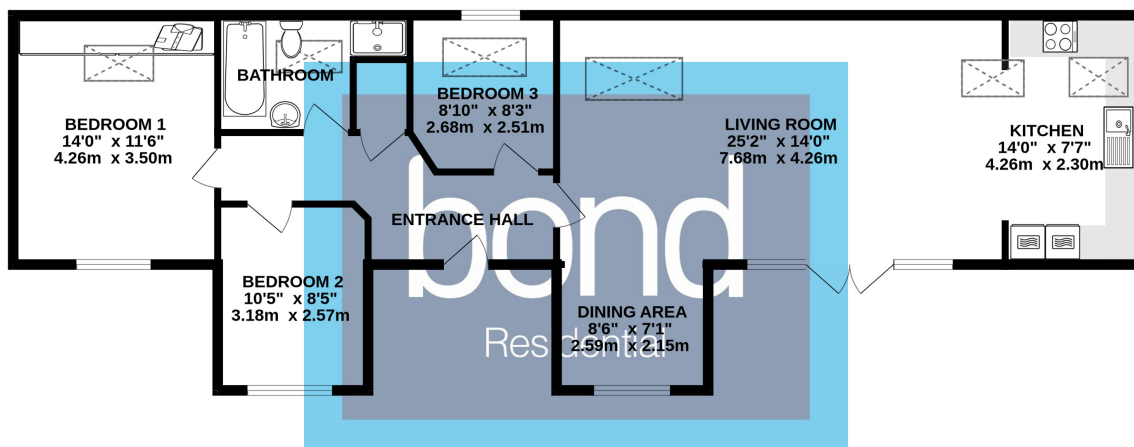
**01245 500599**

**[www.bondresidential.co.uk](http://www.bondresidential.co.uk)**

**f/bondresidential** **@bondresidential**

# FLOOR PLAN

## GROUND FLOOR



Whilst every attempt has been made to ensure the accuracy of the floorplan contained here, measurements of doors, windows, rooms and any other items are approximate and no responsibility is taken for any error, omission or mis-statement. This plan is for illustrative purposes only and should be used as such by any prospective purchaser. The services, systems and appliances shown have not been tested and no guarantee as to their operability or efficiency can be given.  
Made with Metropix ©2023

**bond**  
Residential

**01245 500599**

**[www.bondresidential.co.uk](http://www.bondresidential.co.uk)**

**43 New London Road, Chelmsford, CM2 0ND**



**Consumer Protection from Unfair Trading Regulations 2008 and the Business Protection from Misleading Marketing Regulations 2008.**  
Bond Residential have made every effort to ensure that consumers and/or businesses are treated fairly and provided with accurate material information as required by law. We have not tested any apparatus, equipment, fixture, fitting or any services and as such are unable to verify they are in working order, fit for their purpose, or within the ownership of the seller or landlord. Neither have we been able to check the legal documentation to verify the legal status of the property. We therefore advise potential buyers or tenants to verify these matters with their own solicitors or other advisers.