



Foley's Cottage
Corton, Wiltshire BA12 0SY

Guide Price £775,000 Freehold

COOPER
AND
TANNER



Foley's Cottage, Corton, Wiltshire BA12 0SY

 3  1  2 EPC N/A

Guide Price £775,000 Freehold

Description

Foley's Cottage is a beautiful detached Grade II listed thatched English country cottage set back in its own grounds in the sought after village of Corton in the popular Wylde Valley. This country cottage oozes charm and character. It dates back to the 17th century and was extended in the 1930's. The extensive gardens are stunning with far reaching views across open countryside. It is currently rented out as a holiday home with Sykes Cottages and has exceptional reviews. The property comes to the market with NO ONWARD CHAIN. EARLY VIEWING IS HIGHLY RECOMMENDED. You enter under a covered porch with tiled floor which opens into a beautiful sitting room with large inglenook fireplace with a tiled hearth and Club Fender. This is the feature of the room there is also the traditional bread oven. The French door gives access to a secluded outside patio area with a spiral staircase leading to the rear garden. There is room for a dining table at one end of the Lounge then a door leads to steps into the country kitchen/breakfast room. This room is fitted with a range of units with work surface

over with a double oven and hob and extractor over. This cozy room has display cupboards and parquet flooring. There is a pantry with a slate shelf for keeping produce cool and houses the washing machine. A door then leads to a rear hallway with a downstairs shower room and a door giving access to the side patio. Leading upstairs there is a split staircase, one side leads to two beautiful large bedrooms, one with a vanity unit and the other bedroom has dual aspect. The other side leads to a family bathroom, separate wc and third bedroom. This is your country dream bedroom offering a French door leading out to a stunning English garden which is totally secluded. The property has been tastefully updated by its current owners and provides a beautiful family home. Its location is idyllic and offers the perfect rural retreat with sweeping views across open fields.

Agents note: The ridge of the cottage was rethatched in 2023.









Outside

The property is approached through a front garden gate into a cottage garden surrounded by mature trees, hedges and established plants. You can also access the property through a gate at the side over a foot bridge. There are steps at the side which lead to the extensive county garden where there are so many different areas. There is an orchard where there is a large Summerhouse which includes a fridge. Here you can sit and relax enjoying the sweeping countryside far and beyond. There is a large garden shed with a ride on lawn mower. A beautiful pergola sits covered in roses and established climbers. To the west of the cottage is the Wessex Ridgeway and a small parcel of land lies beyond and is owned by the cottage. At the front of the property to the side there a graveled parking area for three cars. Here there is a log store and storage for garden tools and the bins.

Location

Foley's Cottage is situated in the beautiful village of Corton in the Wylde Valley, ideally located between Bath and Salisbury. Warminster lies approximately 6 miles distant and offers a wide range of both shopping and leisure facilities to include library, sports centre, swimming pool, churches, doctors', dentists' surgeries and post office. Warminster also benefits from a main line railway station to London Waterloo, whilst the nearby A303 provides excellent road links to London to the east and Exeter to the west. Local attractions include Longleat House and Safari Park, Shearwater Lake, Stourhead, Stonehenge and the Salisbury Plain.



Local Information

Local Council: Wiltshire Council

Council Tax Band: Tbc

Heating: Oil

Services: Private drainage (septic tank)- water comes from a well and electricity

Tenure: Freehold



Motorway Links

- M4/M32/M5



Train Links

- Warminster/Westbury

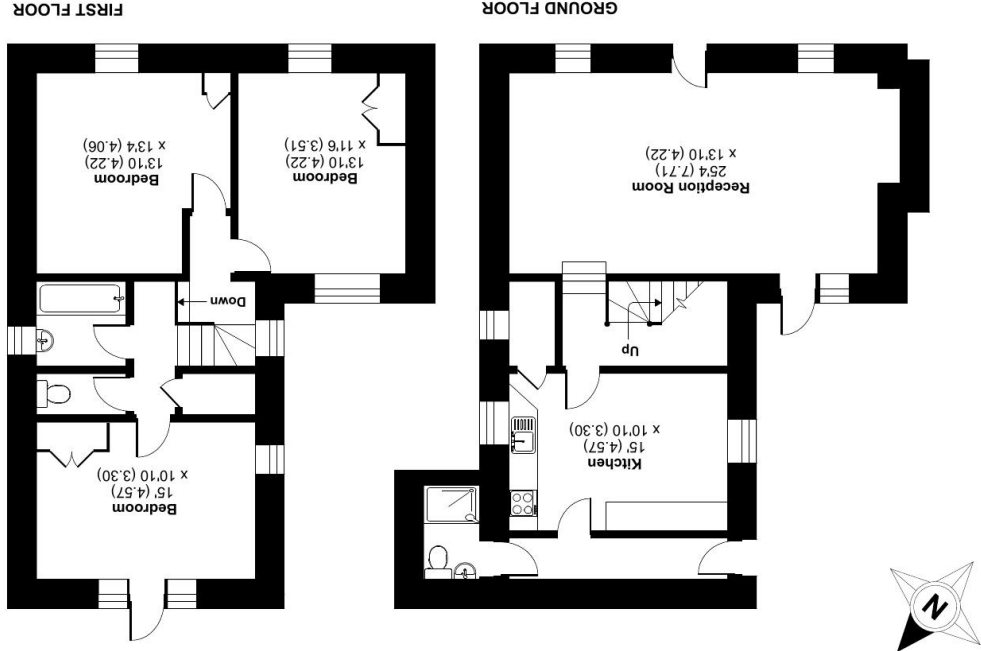


Nearest Schools

- Heytesbury, Codford, Warminster, Sutton Veny, Salisbury

Foleys Cottage, Corton, Warmminster, BA12 0SY

Approximate Area = 1378 sq ft / 128 sq m
For identification only - Not to scale



RICS Certified Property Measurer
Floor plan produced in accordance with RICS Property Measurement Standards incorporating International Property Measurement Standards (IPMS2 Residential). © rchecom 2024
Produced for Cooper and Tanner. REF: 1195822

WARMINSTER OFFICE
telephone 01985 215579
48/50 Market Place, Warmminster BA12 9AN
warmminster@coopertanner.co.uk

Important Notice: These particulars are set out as a general outline only for the guidance of intended purchasers and do not constitute, nor constitute part of, an offer or contract. All descriptions, dimensions, reference to condition and necessary permissions for use and occupation, warranties and other details are given without responsibility and any intending purchasers should not rely on them as statements or representations of fact but must satisfy themselves by inspection or otherwise as to the correctness of each of them.



**COOPER
AND
TANNER**