



Hayfield Court

Cricketts



# 1 Hayfield Court, Eastbury, Hungerford, Berkshire, . RG17 7JT.

## Freehold



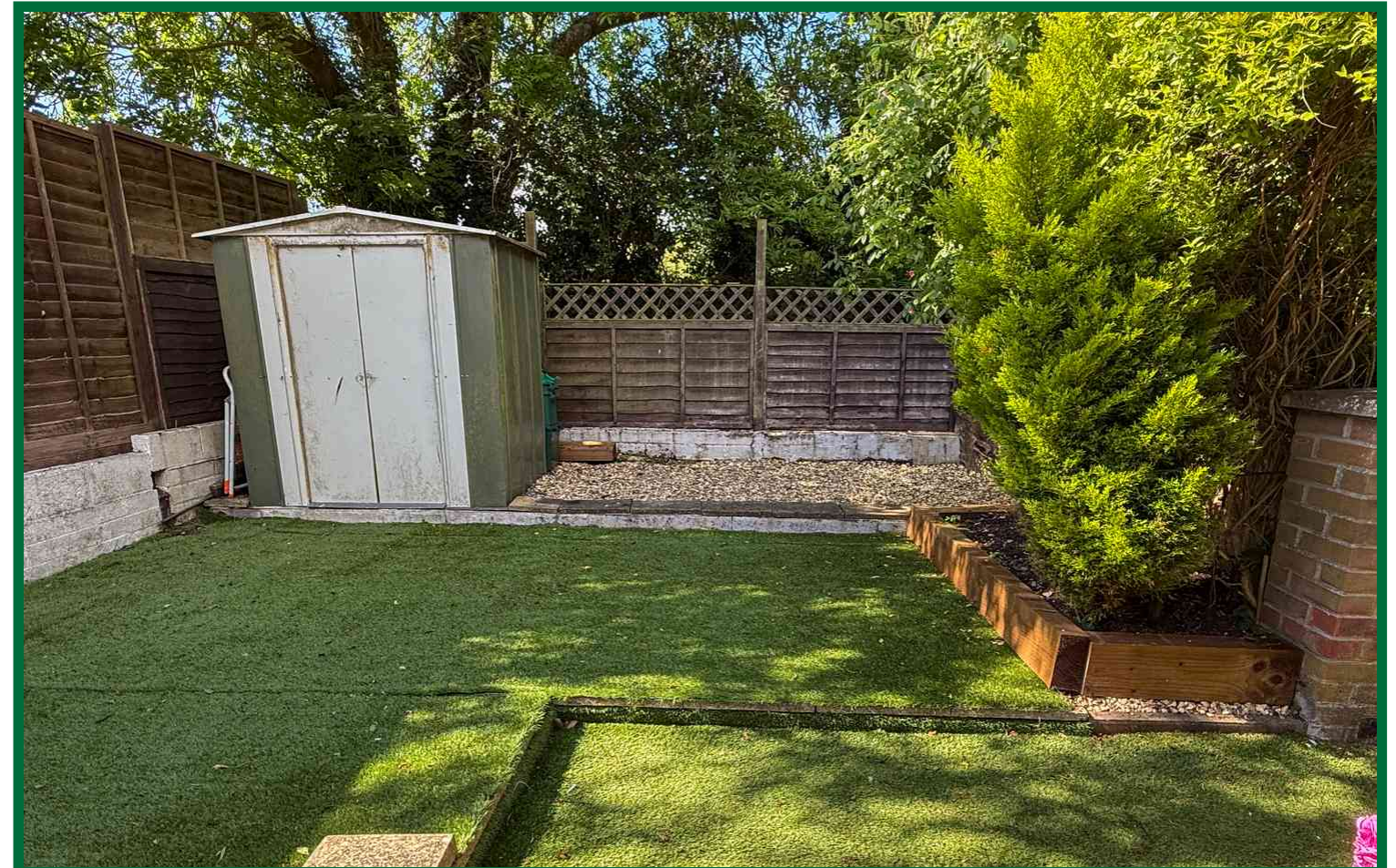
- Rural location
- Off road parking
- South facing garden
- No onward chain
- Extended living space
- Conservatory

Situated in the charming village of Eastbury, near Lambourn, this thoughtfully extended home offers generous and versatile living space ideal for modern family life.

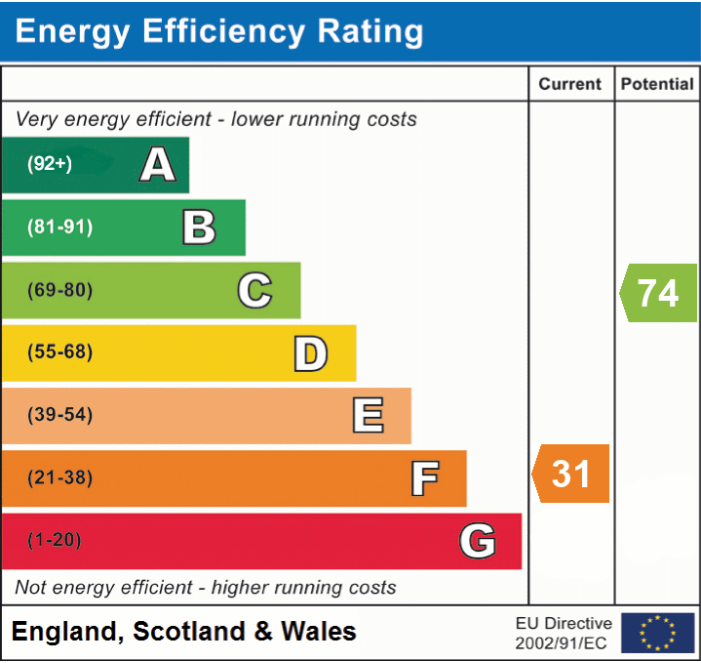
The ground floor features a large kitchen, lounge dining area—perfect for entertaining or relaxing with family. A bright conservatory extends the living space further, opening out to a private garden that's ideal for outdoor enjoyment. The property also benefits from off-street parking for two vehicles, a valuable asset in this peaceful location.

Upstairs, the home offers three well-proportioned bedrooms and a family bathroom, providing comfortable accommodation for all.

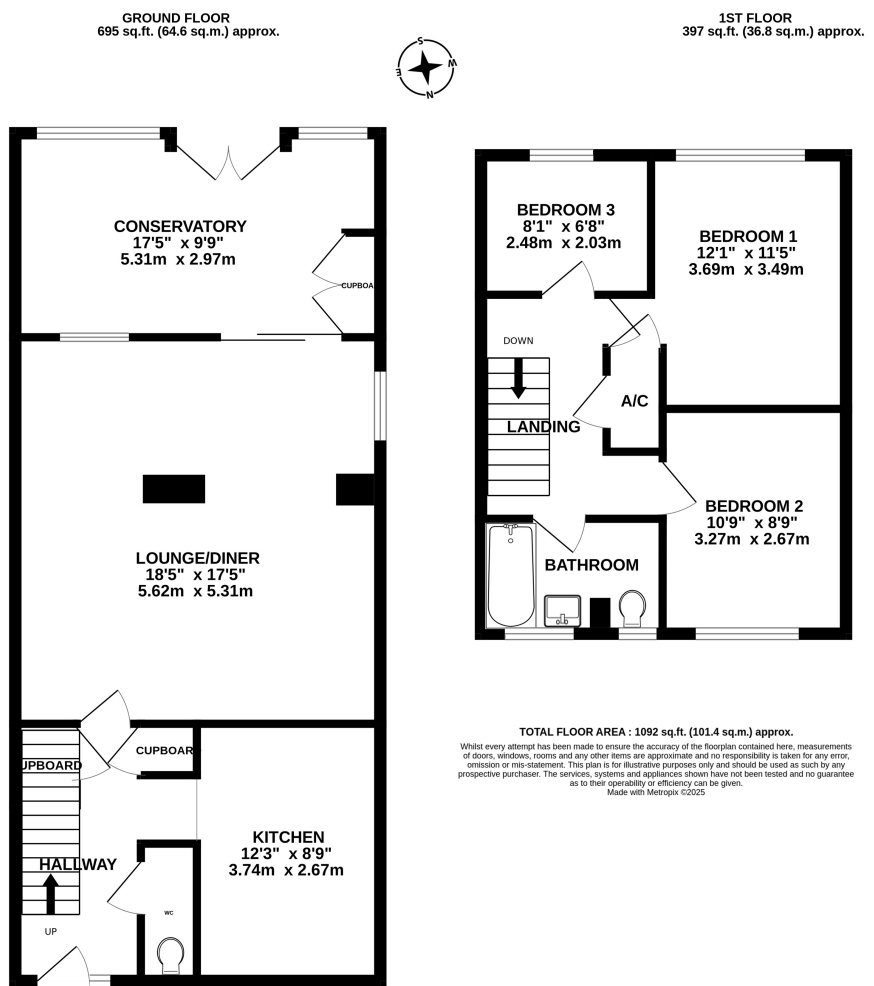
Located in a quiet cul-de-sac in the heart of Eastbury, this property combines countryside charm with practical living, just a short drive from Lambourn and within easy reach of Newbury and the M4.







- **Electricity:** Mains Supply.
- **Heating:** Electric.
- **Water:** Mains Supply.
- **Sewerage:** Mains Supply.
- **Council Tax Band:** D



**ABOUT US:** We are a well-established, independent and highly-regarded, family run estate agency based in Newbury. Offering a bespoke service to suit your individual needs, we get results.

14 The Broadway Newbury Berkshire RG14 1BA  
sales@cricketts.co.uk www.cricketts.co.uk T:01635 43333  
Registered in England Registration No. 04637744 Vat No.811609452



