



9 Whittle Court,
Knowlhill, Milton Keynes, MK5 8FT

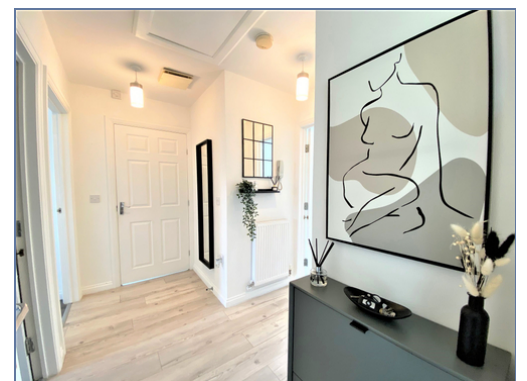
Tel: 01908 231 551
mail@elevationstateagents.com



**25 Oldham Rise, Medbourne, Milton
Keynes, Buckinghamshire, MK5 6GE**

£117,500 Not Applicable

- £5,000 Fixtures & Fittings
- Two double bedroom
- Large balcony
- Newly fitted flooring
- Desirable and Highly Sought-After Location
- £342 per month for rent and service charge
- EPC-C
- EPC Rating





Elevation are pleased to bring to market this show home condition two double bedroom first floor apartment, located within the popular Medbourne development. The property has been refurbished by the current owners. As you enter the entrance hall through to the living room with access to the balcony, kitchen, master bedroom with Juliet balcony and built in wardrobes, second bedroom, family bathroom and allocated parking. The 50% shared ownership property with Guinness Housing Association and has a monthly rent and service charge £342.44 . To arrange a viewing please call the elevation team

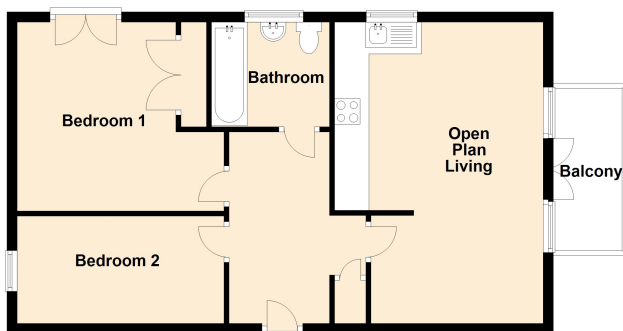
109 years left on lease

Located In the highly popular and low density Medbourne development. Offering lovely walks and close proximity to woodland and Medbourne Pavilion.

Disclaimer

Whilst we have endeavoured to prepare our sales particulars accurately none of the services, appliances or equipment have been tested. A buyer should satisfy themselves on such matters prior to purchase. Any measurements or distances mentioned in these particulars are for guide reference only. If such particulars are fundamental to a purchase, buyers should rely on their own enquiries. All enquiries should be directed to Elevation Estate Agents in the first instance.

Floor Plan



Floor plans are for layout purposes only
Elevation
Plan produced using Plans In

See our full selection of properties online at www.elevationestateagents.com