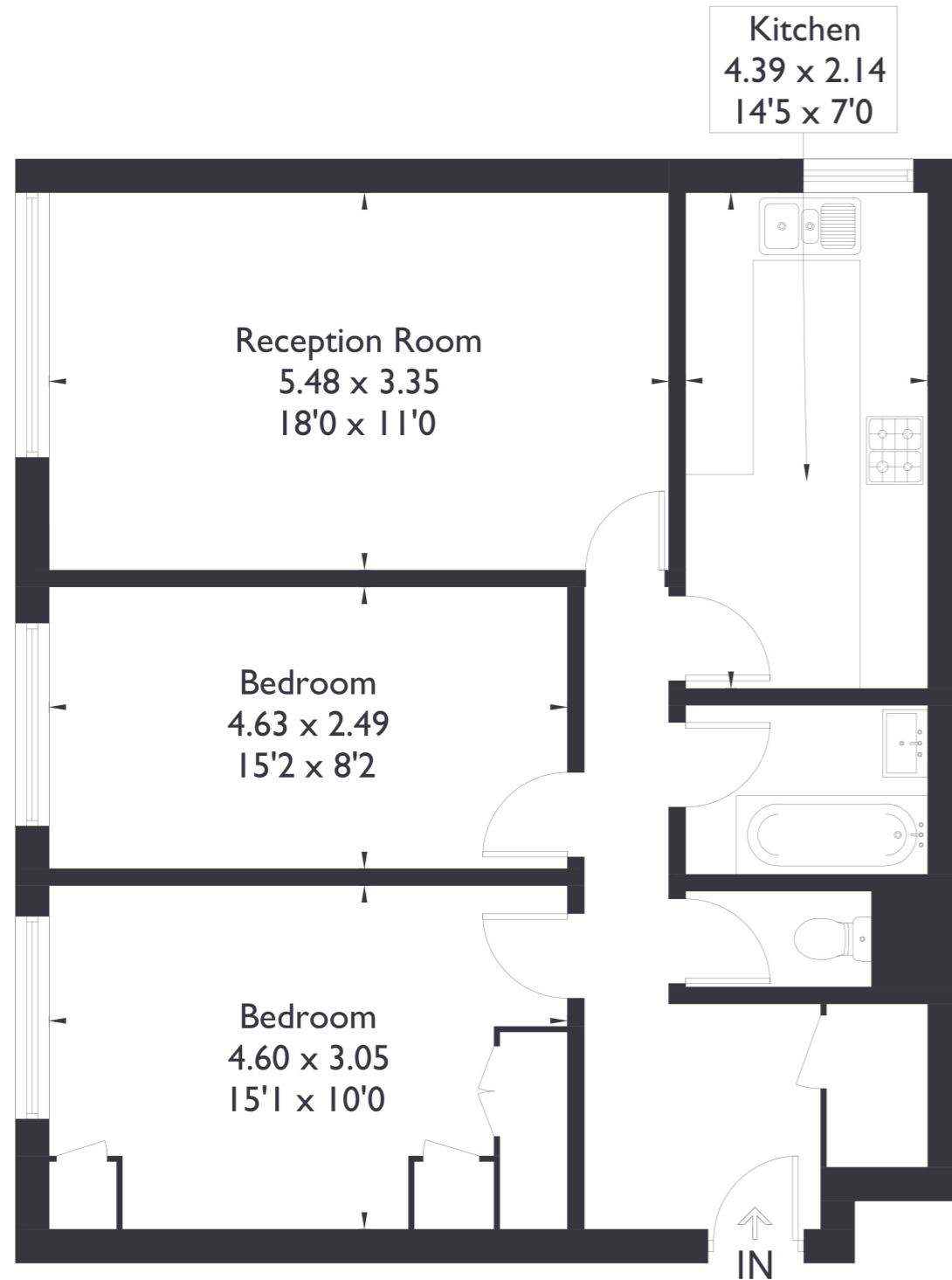


Corfton Lodge, Corfton Road ,W5
Approximate Floor Area = 71.3 sq m / 767 sq ft



First Floor



2 BEDROOM FLAT

Corfton Road, W5
£525,000

Welcome to this beautifully presented first floor flat featuring two spacious double bedrooms and one bathroom, located in a prime area. This property offers a separate kitchen and a bright, inviting living space, along with access to a communal garden.

FEATURES

- Two Bedrooms
- One Bathroom/ Separate W/C
- Ealing Broadway Amenities Nearby
- Ealing Broadway Station (Elizabeth Line)
- Off-Street Parking
- Private Garden
- EPC Rating C

2 BEDROOM FLAT

Corfton Road, W5

£525,000

Ideally situated just a 10 minute walk from Ealing Broadway Station and the area's vibrant shops and amenities, this flat also falls within the catchment for the highly regarded Montpelier Primary School.

Additionally, it includes a private garage and an off street parking space, providing both convenience and added value.

EPC Rating C.

